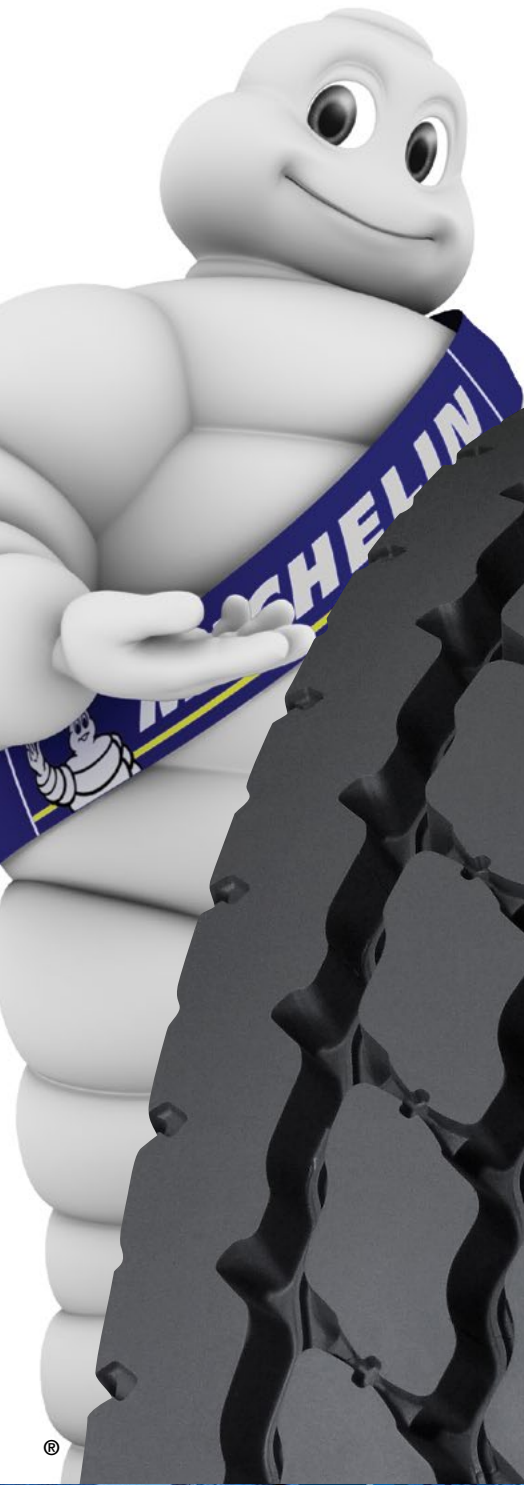


MICHELIN® XZY® 3 TIRE



All-position radial designed for exceptional wear and traction in mixed on/off road applications.



MICHELIN

A better way forward

MICHELIN® XZY® 3 TIRE



ON/OFF ROAD APPLICATIONS

All-position radial designed for exceptional wear and traction in mixed on/off road applications.

Excellent Traction –

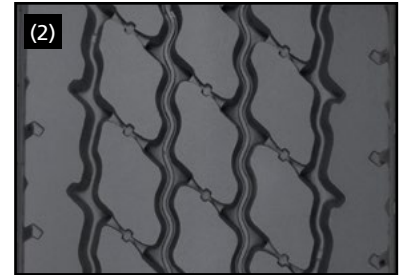
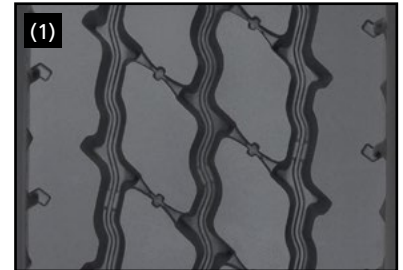
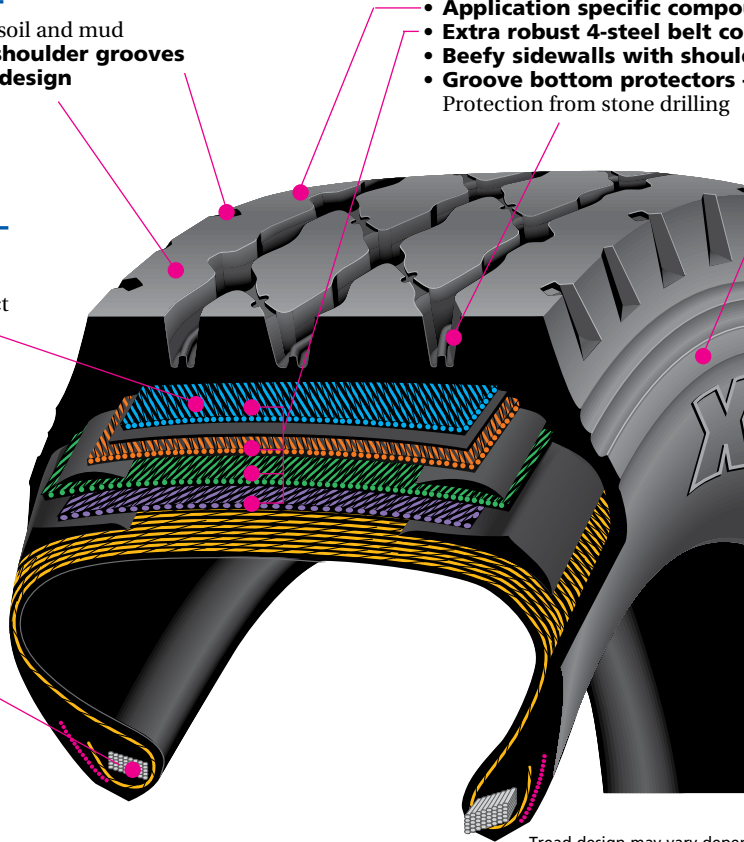
- Optimized traction for soft soil and mud
- **Massive open lateral shoulder grooves**
- **Non-directional tread design**

Exceptional Durability –

- Protection against aggression, chipping and scaling
- **Application specific compounds**
- **Extra robust 4-steel belt construction**
- **Beefy sidewalls with shoulder scallops**
- **Groove bottom protectors –**
Protection from stone drilling

Extended Casing Life –

- Longer life and retreadability
- **Full-width elastic protector ply–** helps protect the working plies from bruising and penetrations, minimizing downtime.
- **Rectangular bead bundle –** a Michelin® exclusive - simulates a solid steel rod “strapping” the tire onto the wheel. This design stabilizes the entire bead region and minimizes fatigue in order to extend casing life.



Tread design may vary depending on size.

Size	Load Range	Catalog Number	Tread Depth	Max. Speed (+)	Loaded Radius		Overall Diameter		Overall Width (‡)		Approved Wheels (Measuring wheel listed first.)	Min. Dual Spacing (‡)		Revs Per Mile	Max. Load and Pressure Single				Max. Load and Pressure Dual			
					32nds	mph	in.	mm	in.	mm		in.	mm		in.	mm	lbs.	psi	kg.	kPa	lbs.	psi
11R22.5 ⁽¹⁾	H	80927	24	65	19.6	498	41.8	1061	11.3	288	8.25, 7.50	12.5	318	496	6610	120	3000	830	6005	120	2725	830
12R22.5 ⁽¹⁾	H	47947	24	65	20.1	509	42.9	1089	11.4	290	8.25, 9.00	13.2	335	483	7390	120	3350	830	6780	120	3075	830
315/80R22.5 ⁽²⁾	L	40200	23	65	19.8	502	42.9	1088	12.5	318	9.00, 8.25 ⁽³⁾	13.8	351	486	9090	130	4125	900	8270	130	3750	900
11R24.5 ⁽¹⁾	H	79250	24	65	20.5	520	43.7	1111	11.4	289	8.25, 7.50	12.5	318	473	7160	120	3250	830	6610	120	3000	830
12R24.5 ⁽¹⁾	H	47951	24	65	21.0	533	44.9	1140	11.5	291	8.25, 9.00	13.2	335	461	7830	120	3550	830	7160	120	3250	830

Note: Wheel listed first is the measuring wheel.

(1, 2) Tread design as indicated on the tire pictures shown above.

(3) For use with 8.25 x 22.5 wheels, consult Michelin.

(*) Exceeding the lawful speed limit is neither recommended nor endorsed.

(‡) Overall widths will change 0.1 inch (2.5 mm) for each 1/4 inch change in rim width. Minimum dual spacing should be adjusted accordingly.

MICHELIN® tires and tubes are subject to a continuous development program. Michelin North America, Inc. reserves the right to change product specifications at any time without notice or obligations. Please consult wheel manufacturer's load and inflation limits. Never exceed wheel manufacturer's limits without permission of component manufacturer.

www.michelintruck.com

United States
Michelin North America, Inc.
 One Parkway South
 Greenville, SC 29615
 1-888-622-2306

Canada
Michelin North America (Canada), Inc.
 2500 Daniel Johnson, Suite 500
 Laval, Quebec H7T 2P6
 1-888-871-4444

Mexico
Industrias Michelin, S.A. de C.V.
 Av. 5 de febrero No. 2113-A
 Fracc. Industrial Benito Juarez
 7 6120, Querétaro, Qro. Mexico
 011 52 442 296 1600