



THE MICHELIN® XDS® 2 PRE-MOLD™ RETREAD



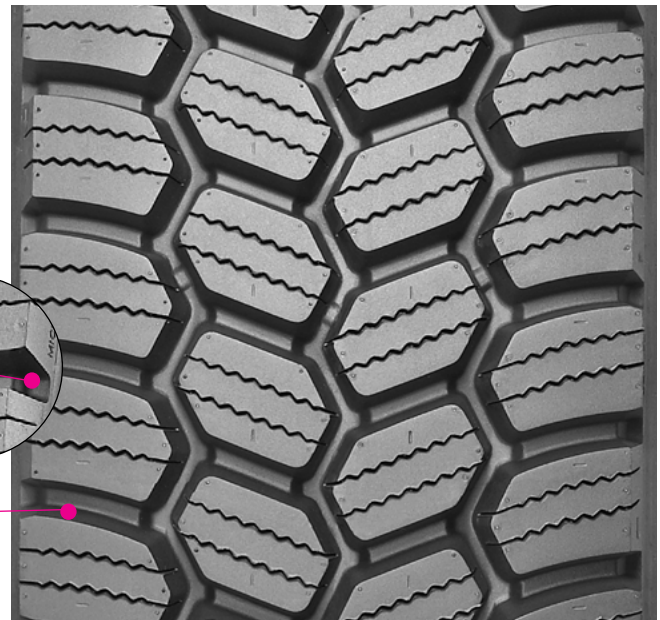
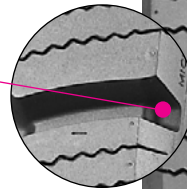
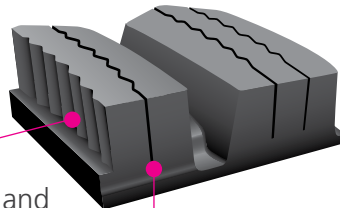
The MICHELIN® XDS®2 Pre-Mold™ Retread delivers year-round drive axle traction, optimized for severe winter conditions.

BENEFITS:

Driver Confidence

Outstanding traction

- **Zig-Zag Groove Walls**
Provide optimized biting edges and excellent water and snow evacuation
- **Deep Sipes**
19/32nds of sipe depth for long life traction
- **V-Shaped Transverse Shoulder Grooves**
Promotes stone, mud, and snow evacuation



10% Longer Tread Life⁽¹⁾

More miles

- **Engineered Tread Compound**
Proprietary tread compound specifically formulated for demanding high scrub applications and improved wear performance
- **Wide Contact Patch**
Distributes force for longer life
- **Directional Tread**
Reduces heel/toe wear associated with open shoulder designs

LINE HAUL REGIONAL URBAN ON/OFF ROAD

Tread Size	Metric	210	220	230	240	250
Tread Depth	Metric	20 mm				
	Inches	25/32"				

(1) Than MICHELIN® XDS® Pre-Mold™ Retread based on comparative materials analysis.

TO FIND OUT MORE
michelintruck.com

FIND US ON FACEBOOK
michelintruck.com

@ CONTACT US BY EMAIL
michelintruck.com/contact-us/

CONTACT US BY TELEPHONE
1-888-622-2306

Michelin North America Inc., One Parkway South, Greenville, SC 29615, 1-888-622-2306
Copyright © 2017 Michelin North America, Inc. The Michelin Man is a registered trademark owned by Michelin North America, Inc. All rights reserved.
An Equal Opportunity Employer PDF only (11/17)

