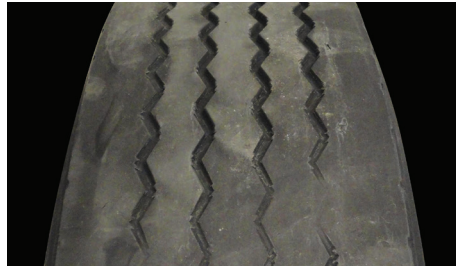


Irregular TRAILER TIRE Conditions



Depression Wear
(Intermediate)

Appearance	One or more interior ribs (not center) worn below adjacent ribs around the tire's circumference.
Probable Cause	Worn suspension components, mismatched dual diameter or inflation pressures, under-inflation, improper bearing adjustment. Aggravated by high speed/light loads.
Corrective Action	Diagnose mechanical condition and correct.
Tire Disposition	Continue to run until pull point, then retread.



Diagonal Wear

Appearance	Localized flat spots worn diagonally across the tread, often repeating around the tire.
Probable Cause	Improper bearing adjustment, misalignment, mismatched dual tire diameter and/or inflation pressure. May start as brake skid. Aggravated by high speed/light loads.
Corrective Action	Analyze cause and correct.
Tire Disposition	Reverse direction of rotation. If excessive, submit for retreading.



Brake Skid Damage

Appearance	Localized spot of excessive wear across tread face showing abrasion marks. Damage may extend into casing.
Probable Cause	New brakes (not worn in), unbalanced brake system, frozen brake lines, driver abuse.
Corrective Action	Check brake system.
Tire Disposition	May be repaired or retreaded if casing is undamaged; otherwise, scrap.



Depression Wear
(Shoulder)

Appearance	Localized areas of wear in shoulder, generally less than 12" in length.
Probable Cause	Improper inflation pressure or tire mismatched on wheel. Can also be caused by some other type of wheel end imbalance.
Corrective Action	Review tire and wheel end maintenance practices.
Tire Disposition	Continue to run until pull point, then retread.



Shoulder Step Wear

Appearance	Tire worn on edge of one shoulder, greater than 12" in circumference.
Probable Cause	Excessive camber, misaligned or damaged axle, improper bearing adjustment.
Corrective Action	Diagnose misalignment and/or mechanical condition and correct.
Tire Disposition	Reverse direction of rotation. If excessive, submit for retreading.



Cupping / Scallop Wear

Appearance	Random areas of fast wear around the tire. Erratic in some instances.
Probable Cause	Mismatched inflation pressure or tire diameters in a dual assembly. Aggravated by high speeds/light loads, poorly maintained suspension components.
Corrective Action	Check for worn components, inflation pressures and matching tread depths.
Tire Disposition	Continue to run until pull point, then retread.

To learn more please contact your Michelin Sales Representative
or visit **UniroyalTruckTires.com**

UNITED STATES

Michelin North America, Inc.
One Parkway South
Greenville, SC • 29615
1-888-622-2306

CANADA

Michelin North America (Canada) Inc.
2500 Daniel-Johnson, Suite 500
Laval (Quebec) H7T 2P6
1-888-871-4444

MEXICO

Industrias Michelin, S.A. de C.V.
Av. 5 de Febrero No. 2113-A
Fracc. Industrial Benito Juarez
7 6120, Querétaro, Qro. Mexico
011 52 442 296 1600

© 2015 MNA(C)I. All rights reserved. PLNA10059E (C13229 - 01/15)



uniroyaltrucktires.com