

Irregular STEER TIRE Wear Patterns



One Sided Wear

Appearance	Wear increasing from one side to the other.
Probable Cause	Out of alignment specification parameters (camber, toe, axle parallelism).
Corrective Action	Check alignment and inspect for worn parts.
Tire Disposition	Continue to run until minimum tread depth is reached.



Shoulder Step Wear

Appearance	Partial or full depression of the inside or outside shoulder tread rib.
Probable Cause	This condition is common on radial tires in slow wearing operations.
Corrective Action	None
Tire Disposition	Continue to run or rotate.



Erosion/River Wear

Appearance	Circumferential worn area situated on the sides of the tread ribs.
Probable Cause	Condition most commonly occurs on slow wearing radial tires in steer or trailer position (free rolling).
Corrective Action	None
Tire Disposition	Continue to run.



Depression Wear
(Intermediate)

Appearance	One or more interior ribs (not center) depressed more than adjacent ribs.
Probable Cause	Incorrect air pressure, worn mechanical part, or non-uniformity such as mismatch.
Corrective Action	Check air pressure and mechanical issues.
Tire Disposition	Rotate or retread.



Diagonal Wear

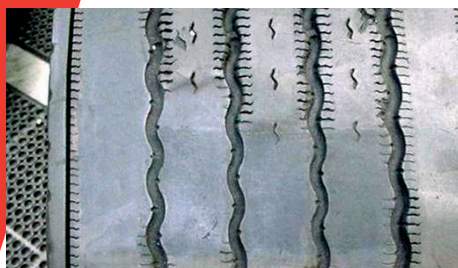
Appearance	Manifests in the form of oblique wear patches. Can appear singularly or repeat around the circumference of the tire.
Probable Cause	Misalignment, radial and lateral runout, severe out of balance, loose wheel bearings or steering parts.
Corrective Action	Check for mismatch and worn parts.
Tire Disposition	Reverse direction of tire or retread.



Radial Feather Wear

Appearance	Feathering at the edge of the tread ribs.
Probable Cause	Usually the result of continued exposure to lateral force, such as excessive toe. Can also form as a result of counter-steering to compensate for drive axle misalignment.
Corrective Action	Check alignment.
Tire Disposition	Rotate to another position or retread.

Irregular STEER TIRE Wear Patterns



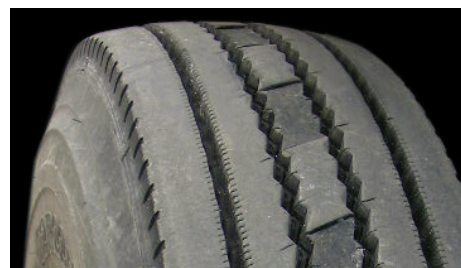
Multiple Flat Spotting Wear

Appearance	Multiple radially worn areas around the tire.
Probable Cause	Faulty shocks, loose/worn wheel bearings, severe balance issues, mismatched pressures or tire diameters, excessive high speed empty operation.
Corrective Action	Check for mechanical issue, check air pressure.
Tire Disposition	Continue to run or retread.



**Depression Wear
(Shoulder)**

Appearance	Localized wear patch on the shoulder rib of the tire. This patch can repeat around the circumference of the tire.
Probable Cause	Faulty shocks, lateral runout, loose wheel bearings, mis-mount, severe balance issue.
Corrective Action	Check for mechanical problem.
Tire Disposition	Continue to run, rotate or retread.



**Depression Wear
(Center)**

Appearance	Circumferential depression wear of the center tread rib.
Probable Cause	Overloaded/underinflated, faulty shocks, loose wheel bearings, mismatch, high speed empty haul conditions.
Corrective Action	Check air pressures/load weight and worn parts.
Tire Disposition	Continue to run, rotate or retread.

To learn more please contact your Michelin Sales Representative or visit UniroyalTruckTires.com

UNITED STATES

Michelin North America, Inc.
One Parkway South
Greenville, SC • 29615
1-888-622-2306

CANADA

Michelin North America (Canada) Inc.
2500 Daniel-Johnson, Suite 500
Laval (Quebec) H7T 2P6
1-888-871-4444

MEXICO

Industrias Michelin, S.A. de C.V.
Av. 5 de Febrero No. 2113-A
Fracc. Industrial Benito Juarez
7 6120, Querétaro, Qro. Mexico
011 52 442 296 1600

© 2015 MNA(C). All rights reserved. PLNA10059E (C13229 - 01/15)



uniroyaltrucktires.com