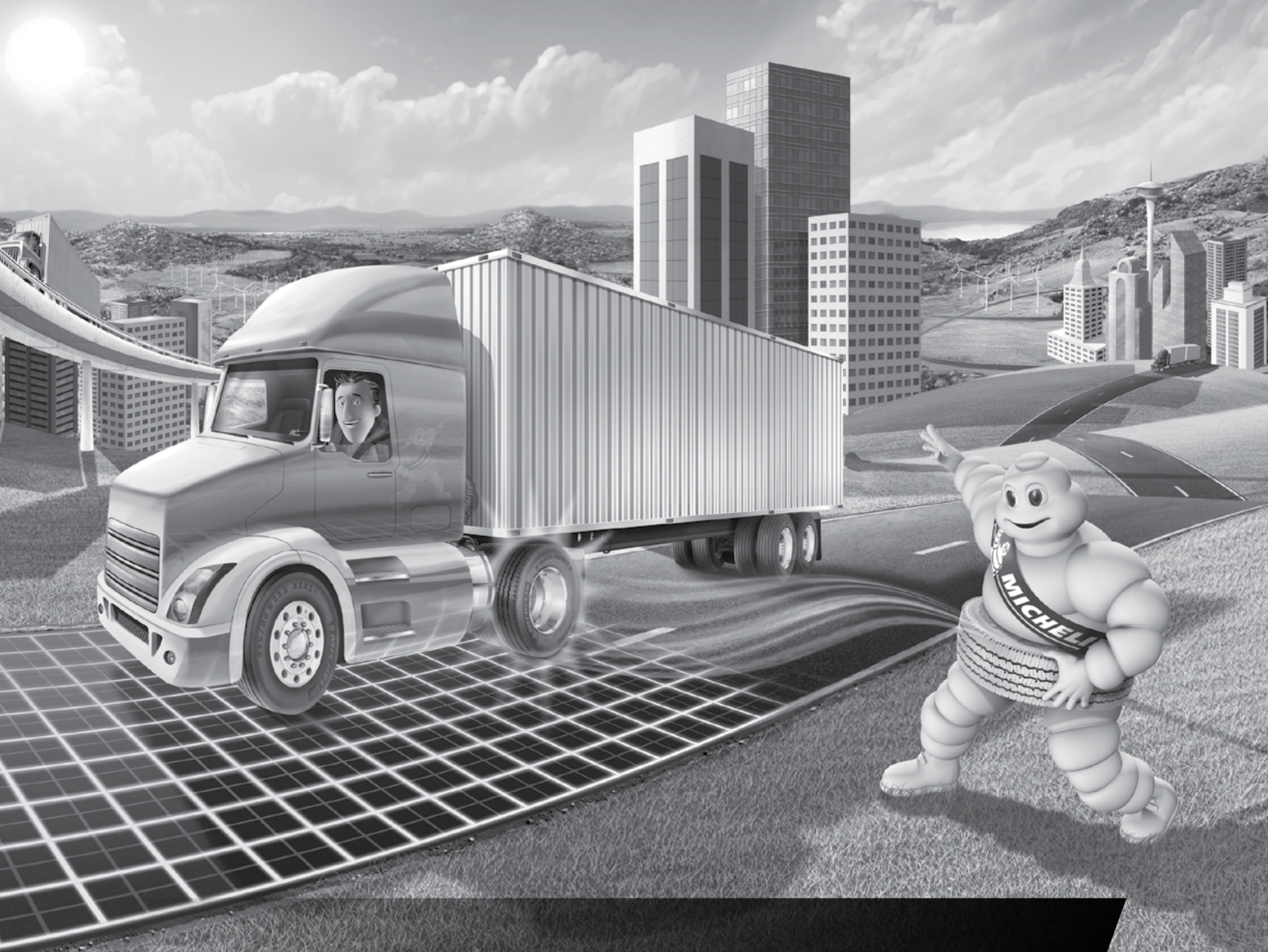


# MICHELIN® Advantage Program Owner-Operator Price List

March 2017 (Updated November 17, 2017)



***TRUCK TIRES, COACH TIRES,  
COMMERCIAL LIGHT TRUCK TIRES***

***WWW.MICHELINTRUCK.COM***



## TABLE OF CONTENTS

### PRODUCT AVAILABILITY

Line Haul.....	2
----------------	---

### PRODUCT AVAILABILITY

Regional.....	3
Urban.....	5
On/Off Road Tires.....	6
Off Road Tires.....	6

### STEER/ALL-POSITION TIRES

X <sup>®</sup> LINE™ ENERGY Z.....	7
X <sup>®</sup> LINE™ ENERGY Z Coach.....	7
X <sup>®</sup> LINE™ ENERGY Z (295).....	8
XR <sup>®</sup> V.....	8
XZA <sup>®</sup> (365/70R22.5).....	9
XZA <sup>®</sup> (17.5" Wheel).....	9
XZA <sup>®</sup> 1.....	10
XZA2 <sup>®</sup> ENERGY.....	10
X <sup>®</sup> COACH™ HL Z.....	11
X <sup>®</sup> MULTI™ ENERGY Z.....	11
X <sup>®</sup> MULTI™ Z 17.5.....	12
X <sup>®</sup> MULTI™ Z 19.5.....	12
X MULTIWAY 3D XZE <sup>®</sup> .....	13
X MULTIWAY HD XZE <sup>®</sup> .....	13
XFE WIDE BASE STEER.....	14
XZE <sup>®</sup> 2+.....	14
XZE <sup>®</sup> .....	15
XZE <sup>®</sup> 2.....	15
XZE 2™ (Standard Sizes).....	16
X ONE <sup>®</sup> XZU <sup>®</sup> S.....	16
XZU <sup>®</sup> S 2.....	17
X <sup>®</sup> INCITY™ Z.....	17
X <sup>®</sup> INCITY™ Z SL.....	18
X ONE <sup>®</sup> XZY <sup>®</sup> 3.....	19
X <sup>®</sup> WORKS™ Z.....	19
XZY <sup>®</sup> 3.....	20
XZY <sup>®</sup> 3 WIDE BASE.....	20
XZL+™.....	21
XZL™.....	21
XML™.....	22
XZL™ WIDE BASE.....	22

### DRIVE TIRES

X <sup>®</sup> LINE™ ENERGY D.....	23
X ONE <sup>®</sup> LINE™ ENERGY D.....	23
X ONE <sup>®</sup> XDN <sup>®</sup> 2.....	24
XD2 <sup>®</sup> .....	24
XDA <sup>®</sup> ENERGY +.....	25
XDA <sup>®</sup> 5+.....	25
XDN <sup>®</sup> 2 / XDN <sup>®</sup> 2 GRIP.....	26
X <sup>®</sup> MULTI™ D 19.5.....	26
X <sup>®</sup> MULTI™ D.....	27
X <sup>®</sup> MULTI™ ENERGY D.....	27
X <sup>®</sup> MULTIWAY XD.....	28
XDE <sup>®</sup> M/S.....	28
XDS <sup>®</sup> .....	29
XDS <sup>®</sup> 2 (19.5" Wheel).....	29
XDS 2™ (Standard Sizes).....	30
X WORKS™ XDY <sup>®</sup> .....	30
XDY-EX2™.....	31

### TRAILER TIRES

X <sup>®</sup> LINE™ ENERGY T.....	32
X <sup>®</sup> LINE™ ENERGY T (19.5" Wheel).....	32
X ONE <sup>®</sup> LINE™ ENERGY T.....	33
XTA <sup>®</sup> 2 ENERGY.....	33
X ONE <sup>®</sup> MULTI™ ENERGY T.....	34
XTE2 <sup>®</sup> .....	34
XTE2 <sup>®</sup> +.....	35
X <sup>®</sup> MULTI™ T (17.5" Wheel).....	35
X <sup>®</sup> MULTI™ T2.....	36
XTA <sup>®</sup> .....	36
XTE <sup>®</sup> .....	37
XTY <sup>®</sup> 2.....	37

### LIGHT TRUCK TIRES

XPS <sup>®</sup> RIB.....	38
XPS <sup>®</sup> TRACTION.....	38

**MICHELIN<sup>®</sup> tires and tubes are subject to a continuous development program.**

**Michelin North America, Inc. reserves the right to change product specifications at any time without notice or obligations.**

**Please consult wheel manufacturer's load and inflation limits. Never exceed wheel manufacturer's limits without permission of component manufacturer.**

### GENERAL CONDITIONS OF SALE

This Price Book cancels and replaces all previous price lists and is subject to change without notice and may vary by region. The inclusion of a size or tread design in this Price Book does not, in any way, imply availability. Taxes, if any, are not included. Michelin North America, Inc. may decline to make delivery if, at any time, it is not satisfied with the Dealer's/ Customer's credit responsibility or if the applicable Dealer's technical services are not up to requirements.



PRODUCT AVAILABILITY



LINE HAUL

SIZE	LOAD RANGE	TREAD NAME	SMARTWAY® VERIFIED	CATALOG NUMBER	TREAD DEPTH 32ND	WHEEL POSITION			DIRECTIONAL	RV USE
						AWP	DRIVE	TRAILER		
10R17.5	G	XZA		05008	16	■				■
245/70R17.5	J	XTA2 ENERGY		78370	13			■		
265/70R19.5	H	X LINE ENERGY T		40936	13			■		
11R22.5	G	X LINE ENERGY D	■	35887	23		■			
	G	X LINE ENERGY T	■	92005	12			■		
	G	X LINE ENERGY Z	■	03363	19	■			■	■
	G	XDA5+		14003	30		■			
	G	XDN2		72805	27		■			
	H	X LINE ENERGY Z	■	06697	19	■			■	■
	H	XDN2		64321	27		■			
12R22.5	H	XDN2		51753	27		■			
235/80R22.5	G	XRV		87511	16	■				■
255/70R22.5	H	XD2		74493	25		■			
255/80R22.5	G	XRV		59634	16	■				■
275/70R22.5	J	XZA2 ENERGY	■	90059	18	■				■
275/80R22.5	G	X LINE ENERGY D	■	36859	23		■			
	G	X LINE ENERGY T	■	92052	12			■		
	G	X LINE ENERGY Z	■	03885	19	■			■	■
	G	XDA ENERGY +	■	08024	23		■			
	G	XDA5+		61310	30		■			
	G	XDN2		63465	27		■			
	H	X LINE ENERGY Z	■	66205	19	■			■	■
295/60R22.5	J	X LINE ENERGY Z	■	35378	14	■				
295/80R22.5	H	XZA2 ENERGY	■	76807	16	■				■
305/70R22.5	L	XRV		93499	16	■				■
315/80R22.5	L	X LINE ENERGY Z (Coach)		09807	17	■				
	L	XDN2 GRIP		04355	28		■		■	
	L	XZA1		47056	18	■				■
	L	XZA2 ENERGY	■	76184	17	■				■
365/70R22.5	L	XZA		52215	19	■				■
445/50R22.5	L	X ONE LINE ENERGY D	■	96678	24		■			
	L	X ONE LINE ENERGY T	■	84085	13			■		
	L	X ONE XDN2	■	36587	27		■			
455/55R22.5	L	X ONE XDN2		31535	27		■			
11R24.5	H	X LINE ENERGY T	■	92448	12			■		
	H	X LINE ENERGY Z	■	18748	19	■			■	■
	H	XDA5+		97973	30		■			
	H	XDN2		87129	27		■			
275/80R24.5	G	X LINE ENERGY D	■	36992	23		■			
	G	X LINE ENERGY T	■	92981	12			■		
	G	XDA5+		01376	30		■			
	G	XDN2		75684	27		■			
	H	X LINE ENERGY Z	■	81281	19	■			■	■
305/75R24.5	J	XDA5		30987	30		■			

**PRODUCT AVAILABILITY**



**REGIONAL**

SIZE	LOAD RANGE	TREAD NAME	SMARTWAY® VERIFIED	CATALOG NUMBER	TREAD DEPTH 32ND	WHEEL POSITION			DIRECTIONAL	RV USE
						AWP	DRIVE	TRAILER		
215/75R17.5	G	X MULTI Z 17.5		25151	14	■			■	
	H	XTE2+		68593	15			■		
	J	XTA		82636	15			■		
245/70R17.5	H	X MULTI T		18537	15			■		
225/70R19.5	G	XDS2		24975	18		■			
	G	XZE		91043	17	■				■
245/70R19.5	H	X MULTI T		18537	15			■		
	H	XDS2		23134	19		■			
	H	XZE		75997	18	■				■
	J	XTE2		67113	16			■		
265/70R19.5	G	X MULTI D 19.5	■	92982	16		■			
	G	X MULTI Z 19.5		75319	16	■			■	■
285/70R19.5	H	X MULTI D 19.5	■	09733	17		■			
	J	X MULTI Z 19.5		31459	16	■			■	■
	J	XTE2		51278	18			■		
305/70R19.5	J	XZA		50505	18	■				
10R22.5	G	XDE M/S		87357	23		■			
	G	XZE		99141	21	■				■
11R22.5	G	X MULTI D		33502	28		■			
	H	X MULTI D		80276	28		■			
	G	X MULTI ENERGY D	■	58300	24		■			
	G	XDE M/S		73493	26		■			
	G	XTE		21307	16			■		
	G	XZE 2		78390	22	■				■
	H	X MULTI ENERGY Z	■	03168	20		■			
	H	XDE M/S * (1)		73927	28		■			
	H	XDS 2		05359	26		■		■	
	H	XZE 2		67042	22	■				■
12R22.5	H	XDS		62208	26		■		■	
	H	XZE * (1)		85335	22	■				■

(1) \* Cut & chip resistant tread compound  
 Product Availability - Regional continues on next page.



PRODUCT AVAILABILITY



**REGIONAL**

SIZE	LOAD RANGE	TREAD NAME	SMARTWAY® VERIFIED	CATALOG NUMBER	TREAD DEPTH 32ND	WHEEL POSITION			DIRECTIONAL	RV USE
						AWP	DRIVE	TRAILER		
255/80R22.5	G	XZE		94390	20	■				■
275/70R22.5	J	XZE2+		78395	19	■				■
275/80R22.5	G	X MULTI ENERGY D	■	63049	24		■			
	G	X MULTI D		76710	28		■			
	G	XTE		17706	16			■		
	G	XZE 2		55895	22	■				■
	H	X MULTI ENERGY Z	■	26902	20		■			
	H	XZE		01637	22	■				■
295/60R22.5	J	X MULTIWAY XD		06376	23		■		■	■
295/80R22.5	H	X COACH HL Z	■	31078	18	■				
	H	X MULTIWAY 3D XZE		07719	19	■				■
365/70R22.5	L	XZA		52215	19	■				■
385/55R22.5	L	X MULTI T2		28644	19			■		
385/65R22.5	L	X MULTIWAY HD XZE		26281	19		■			
425/65R22.5	L	XFE (wb) (Steer)		11829	21		■			
445/50R22.5	L	X ONE MULTI ENERGY T	■	33836	16			■		
455/55R22.5	L	X ONE MULTI ENERGY T	■	47798	16			■		
11R24.5	G	XTE		07025	16			■		
	G	XZE 2		91867	22	■				■
	H	X MULTI D		27287	28		■			
	H	X MULTI ENERGY D	■	61739	24		■			
	H	XDE M/S * (1)		46695	28		■			
	H	XDS 2		06613	25		■		■	
	H	XZE 2		88507	22	■				■
275/80R24.5	G	XZE 2		75519	22			■		
305/75R24.5	J	XZE2		67251	22	■				

(1) \* Cut & chip resistant tread compound

**PRODUCT AVAILABILITY**



**URBAN**

SIZE	LOAD RANGE	TREAD NAME	CATALOG NUMBER	TREAD DEPTH 32ND	WHEEL POSITION				DIRECTIONAL
					AWP	STEER	DRIVE	TRAILER	
11R22.5	H	X INCITY Z	13712	20	■				
275/70R22.5	J	X INCITY Z	59714	21	■				
305/70R22.5	L	X INCITY Z	02348	22	■				
305/85R22.5	L	X INCITY Z	36530	24	■				
305/85R22.5	L	X INCITY Z SL	62156	24	■				
315/80R22.5	L	XZUS 2	77510	23	■				
455/55R22.5	M	X ONE XZU S	28513	23	■				

**PRODUCT AVAILABILITY**



**ON/OFF ROAD TIRES**

SIZE	LOAD RANGE	TREAD NAME	CATALOG NUMBER	TREAD DEPTH 32ND	WHEEL POSITION				DIRECTIONAL
					AWP	STEER	DRIVE	TRAILER	
325/85R16	D	XML	37984	21	■				
12.00R20	G	XML	63997	20	■				
395/85R20	G	XML	99131	30	■				
11R22.5	H	X WORKS Z	15701	24	■				
	H	X WORKS XDY	89725	30			■		■
12R22.5	H	X WORKS Z	11073	24	■				
275/70R22.5	J	XTY2	01658	21				■	
315/80R22.5	L	X WORKS Z	64204	23	■				
	L	X WORKS XDY	55576	28			■		■
385/65R22.5	J	XZY 3 Wide Base	53779	22	■				
425/65R22.5	L	XZY3 Wide Base	40321	23	■				
445/65R22.5	L	XZY 3 Wide Base	83691	23	■				
455/55R22.5	M	X ONE XZY 3	11629	23	■				
11R24.5	H	X WORKS Z	78261	24	■				
	H	X WORKS XDY	90022	30			■		■
	H	XDY-EX2	23274	32			■		
12R24.5	H	XZY 3	47951	24	■				



**X<sup>®</sup> LINE™ ENERGY Z**

LINE HAUL & BUS / RV



The best just got better. The MICHELIN<sup>®</sup> X LINE™ ENERGY Z tire is guaranteed to deliver 20% more mileage vs. competitive line haul steer tires<sup>(1)</sup> and 5% better rolling resistance than the MICHELIN<sup>®</sup> XZA3<sup>®</sup>+ EVERTREAD<sup>®</sup> tire it replaces.<sup>(2)</sup>

← Directional tread

- Industry Leading Mileage Guarantee: 20% more mileage guaranteed vs. competitor line haul steer tires.<sup>(1)</sup>
- Improved Fuel Efficiency: Ultra Fuel Efficient Casing delivers 5% better rolling resistance than the ultra-fuel efficient MICHELIN<sup>®</sup> XZA3<sup>®</sup>+ EVERTREAD<sup>®</sup> tire.<sup>(2)</sup>
- Dual Compound Tread: Delivers more mileage without compromising ultra-fuel-efficiency and retreadability.
- Even Wear: Decoupling groove and directional mini sipes provide even wear.
- Maximum Retreadability: 7/7/3 manufacturer's limited casing warranty.<sup>(3)</sup>



**7 Year** 7 YEAR 700,000-MILE 3-RETREAD LIMITED WARRANTY<sup>(3)</sup>

SmartWay<sup>®</sup> Verified

SIZE	Load Range	Original Tread Depth 32nds	Loaded Radius in.	Overall Diameter in.	Overall Width in.	Approved Wheels (Measuring wheel listed first.)	Revs Per Mile	MSPN	MEMBER PRICE	FET
11R22.5 <sup>(3,4)</sup>	G	19	19.3	41.3	11.2	8.25, 7.50	502	03363	\$510.40	\$25.23
11R22.5 <sup>(3,4)</sup>	H	19	19.1	41.3	11.2	8.25, 7.50	503	06697	\$528.00	\$29.39
275/80R22.5 <sup>(3,4)</sup>	G	19	18.6	40.1	11.0	8.25, 7.50	518	03885	\$510.40	\$25.23
275/80R22.5 <sup>(3,4)</sup>	H	19	18.7	40.1	11.0	8.25, 7.50	518	66205	\$534.00	\$34.59
11R24.5 <sup>(3,4)</sup>	H	19	20.2	43.3	11.3	8.25, 7.50	479	18748	\$563.20	\$34.59
275/80R24.5 <sup>(3,4)</sup>	H	19	19.3	41.3	10.7	8.25, 7.50	501	81281	\$554.40	\$31.00

(1) Please see MichelinTruck.com > Reference Materials > Warranties/Guarantees for details.  
 (2) Vs. MICHELIN<sup>®</sup> XZA3<sup>®</sup>+ EVERTREAD<sup>®</sup> based on internal rolling resistance tests using ISO 28580 in tire size 275/80R22.5.  
 (3) 7/7/3 Manufacturer's Limited Casing Warranty: 7 Year or 700,000 Mile or 3-Retread Limited Warranty for MICHELIN<sup>®</sup> X<sup>®</sup> LINE™ ENERGY Z tire when retreaded by an authorized Michelin Retread Technologies (MRT) Dealer only. See limited warranty for details.  
 (4) Directional tread design (For 1st Half of Life).

**X<sup>®</sup> LINE™ ENERGY Z Coach**

LINE HAUL & BUS / RV



Improved fuel-efficient<sup>(1)</sup>, all position service in long distance applications such as Highway Coach.

- Improved Fuel Economy – The MICHELIN<sup>®</sup> X<sup>®</sup> LINE™ ENERGY Z tire new tread compound generated a 7% reduction in rolling resistance versus the MICHELIN<sup>®</sup> XZA<sup>®</sup>2 ENERGY 315/80R22.5.
- Groove wall miniature sipes helps fight irregular wear to improve mileage
- Great traction & handling increased net contact area – 3% greater contact area versus the MICHELIN<sup>®</sup> XZA<sup>®</sup>2 ENERGY tire meaning more rubber on the road
- Zig-Zag grooves improves traction in new and worn tire conditions
- Extended Casing Life – Full width elastic protector ply helps protect against penetrations, impacts breaks, and shocks for maximum casing durability.



SIZE	Load Range	Original Tread Depth 32nds	Loaded Radius in.	Overall Diameter in.	Overall Width in.	Approved Wheel	Revs Per Mile	MSPN	MEMBER PRICE	FET
315/80R22.5	L	17	19.6	42.3	12.4	9.00	491	09807	\$668.25	\$52.85

(1) Based on industry standard rolling resistance testing of comparable tires or retreads. Actual results may vary, and may be impacted by many factors, to include road conditions, weather and environment, driver performance, etc.

Note: Wheel listed first is the measuring wheel.  
 Exceeding the lawful speed limit is neither recommended nor endorsed.  
 MICHELIN<sup>®</sup> tires and tubes are subject to a continuous development program. Michelin North America, Inc. reserves the right to change product specifications at any time without notice or obligations.



**X<sup>®</sup> LINE<sup>™</sup> ENERGY Z (295)**

LINE HAUL

**An ultra fuel efficient, all position tire that also provides high mileage and enhanced casing durability.**

- Infini-Coil<sup>™</sup> Belt Technology – Optimizes the shape of the contact patch for longer tread life and strengthens the crown against shocks and impacts.
- Advanced Tensile Technology – Helps to improve the strength of the belt package.
- Shock Pad – An increased layer of protection between the protector ply and the belt package to help absorb the forces of impacts and shocks.
- 17% improvement in wear life versus the MICHELIN<sup>®</sup> XZA<sup>®</sup>2 Energy tire in the 295/60R22.5 LRJ size.<sup>(1)</sup> Improved Compounding – Helps combining the latest Michelin Advanced Technology compounds and innovative tread design features to deliver increased removal miles.
- Better Miles per Gallon – 26% reduction in rolling resistance compared to the MICHELIN<sup>®</sup> XZA<sup>®</sup>2 Energy tire.<sup>(2)</sup>
- Syphon Groove – A new regenerating tread design that at 5/32nds fully exposes two additional circumferential grooves, which increases the ability to evacuate liquid material in later tread life.



SIZE	Load Range	Original Tread Depth 32nds	Loaded Radius in.	Overall Diameter in.	Overall Width in.	Approved Wheel	Revs Per Mile	MSPN	LIST PRICE	FET
<b>295/60R22.5</b>	J	14	16.7	36.1	11.8	9.00	570	<b>35378</b>	<b>\$550.00</b>	<b>\$36.76</b>

(1) Based on Michelin internal wear tests and extrapolation for tire size 295/60R22.5. Actual results may vary.  
 (2) Michelin internal testing.

**XRV<sup>®</sup>**

LINE HAUL & BUS / RV



**All-position radial designed specifically for exceptional performance on recreational vehicles and motorhomes**

- Wide, “see-through” grooves promote drainage efficiency to help improve traction on wet surfaces
- Multi-siping helps deliver dependable grip and long, even wear
- Enlarged sidewall characters makes load/pressure information easier to read, facilitating proper use and maintenance
- Stable tread with cool running compound engineered to reduce squirm and lower heat for improved handling and durability



SIZE	Load Range	Original Tread Depth 32nds	Loaded Radius in.	Overall Diameter in.	Overall Width in.	Approved Wheels (Measuring wheel listed first.)	Revs Per Mile	MSPN	MEMBER PRICE	FET
<b>235/80R22.5<sup>(1)</sup></b>	G	16	17.4	37.1	9.2	6.75, 7.50	556	<b>87511</b>	<b>\$401.72</b>	<b>\$11.06</b>
<b>255/80R22.5<sup>(1)</sup></b>	G	16	17.9	38.2	9.9	7.50, 8.25	541	<b>59634</b>	<b>\$504.64</b>	<b>\$16.07</b>
<b>305/70R22.5<sup>(2)</sup></b>	L	16	18.1	39.1	12.3	9.00, 8.25	531	<b>93499</b>	<b>\$616.69</b>	<b>\$40.92</b>

(1, 2) Tread design as indicated above the tire picture.

Note: Wheel listed first is the measuring wheel.  
 Exceeding the lawful speed limit is neither recommended nor endorsed.  
 MICHELIN<sup>®</sup> tires and tubes are subject to a continuous development program. Michelin North America, Inc. reserves the right to change product specifications at any time without notice or obligations.



**XZA® (365/70R22.5)**

LINE HAUL & BUS / RV

**Fuel-efficient,<sup>(1)</sup> all-position radial designed for long life in highway steer axle service**

- Advanced Technology™ compounding helps reduce rolling resistance promoting low fuel consumption<sup>(1)</sup> in balance with mileage, durability and casing endurance
- Over 7,000 trapezoidal micro sipes on groove edges help break water surface tension to promote traction on wet and slippery surfaces
- Original shoulder groove design offers enhanced resistance to uneven shoulder wear



SIZE	Load Range	Original Tread Depth 32nds	Loaded Radius in.	Overall Diameter in.	Overall Width in.	Approved Wheel	Revs Per Mile	MSPN	MEMBER PRICE	FET
<b>365/70R22.5</b>	L	19	19.6	42.5	14.3	10.50	490	<b>52215</b>	<b>\$691.60</b>	<b>\$33.08</b>



**XZA® (17.5" Wheel)**

LINE HAUL & BUS / RV

**All-position radial with proven versatility**

- Massive shoulders and application specific compound help resist scrub and abrasion, promoting extended tread life
- Zig-zag groove design for true all-position use



SIZE	Load Range	Original Tread Depth 32nds	Loaded Radius in.	Overall Diameter in.	Overall Width in.	Approved Wheels (Measuring wheel listed first.)	Revs Per Mile	MSPN	MEMBER PRICE	FET
<b>10R17.5</b>	G	16	15.6	33.9	9.5	6.75, 7.50	615	<b>05008</b>	<b>\$391.76</b>	<b>\$12.29</b>

Note: Wheel listed first is the measuring wheel.

Exceeding the lawful speed limit is neither recommended nor endorsed.

MICHELIN® tires and tubes are subject to a continuous development program. Michelin North America, Inc. reserves the right to change product specifications at any time without notice or obligations.



**XZA®1**

LINE HAUL, BUS / RV & REGIONAL



**Even-wearing, all-position tire optimized for heavy axle loads in highway and limited regional service<sup>(1)</sup>**

- Miniature sipes in groove walls and variable groove angles help reduce irregular wear and improve overall performance
- Full-width elastic protector ply helps protect the working plies from bruising and penetrations
- Flat crown radius helps enhance wear and treadlife



SIZE	Load Range	Original Tread Depth 32nds	Loaded Radius in.	Overall Diameter in.	Overall Width in.	Approved Wheels (Measuring wheel listed first.)	Revs Per Mile	MSPN	MEMBER PRICE	FET
<b>315/80R22.5</b>	L	18	19.6	42.5	12.5	9.00	489	<b>47056</b>	<b>\$639.60</b>	<b>\$52.83</b>

(1) "No bus shall be operated with regrooved, recapped or retreaded tires on the front wheels." US Code of Federal Regulations: Title 49, Transportation; Part 393.75.

**XZA2® ENERGY**

LINE HAUL & BUS / RV



**Fuel-efficient<sup>(1)</sup>, all-position radial designed for long life in highway steer axle service<sup>(2)</sup>**

- Unique intermediate rib design helps combat the onset of irregular wear in highway service
- Exceptional handling and responsiveness through optimized shoulder design
- Traction and lateral control offered by miniature sipes and variable groove angles



SIZE	Load Range	Original Tread Depth 32nds	Loaded Radius in.	Overall Diameter in.	Overall Width in.	Approved Wheels (Measuring wheel listed first.)	Revs Per Mile	MSPN	MEMBER PRICE	FET
<b>275/70R22.5<sup>(1)</sup></b>	J	18	17.6	38.0	10.9	7.50, 8.25	545	<b>90059</b>	<b>\$493.95</b>	<b>\$32.51</b>
<b>295/80R22.5<sup>(1)</sup></b>	H	16	19.1	41.3	11.8	9.00, 8.25	503	<b>76807</b>	<b>\$645.25</b>	<b>\$40.92</b>
<b>315/80R22.5<sup>(1)</sup></b>	L	17	19.5	42.3	12.5	9.00	492	<b>76184</b>	<b>\$626.65</b>	<b>\$52.83</b>

(1) Based on industry standard rolling resistance testing of comparable tires or retreads. Actual results may vary, and may be impacted by many factors, to include road conditions, weather and environment, driver performance, etc.

(2) "No bus shall be operated with regrooved, recapped or retreaded tires on the front wheels." US Code of Federal Regulations: Title 49, Transportation; Part 393.75.

Note: Wheel listed first is the measuring wheel.

Exceeding the lawful speed limit is neither recommended nor endorsed.

MICHELIN® tires and tubes are subject to a continuous development program. Michelin North America, Inc. reserves the right to change product specifications at any time without notice or obligations.



**X<sup>®</sup> COACH™ HL Z**

REGIONAL & BUS / RV

**Increased load capacity without compromising mileage, in an all-position tire designed for line haul and regional bus applications<sup>(1)</sup>**

- Increased carrying capacity - 7.5 tons for axles with single tires - compared to MICHELIN<sup>®</sup> X<sup>®</sup> COACH™ XZ tires. This improvement is delivered by use of Michelin patented Infini-Coil Technology™, featuring a 1/4 mile of steel cable for improved load capacity. In addition, wide shoulder ribs and an improved distribution of pressure across the tire width enable the greater load capacity.
- Exceptional handling comes from wide shoulder ribs and four longitudinal grooves that provide optimized traction in all conditions
- Longer casing life and retreadability is also a benefit of the Infini-Coil Technology™, along with the full width protector ply and rectangular bead bundles



Meets SmartWay<sup>®</sup> Requirements\*

SIZE	Load Range	Original Tread Depth 32nds	Loaded Radius in.	Overall Diameter in.	Overall Width in.	Approved Wheels (Measuring wheel listed first.)	Revs Per Mile	MSPN	MEMBER PRICE	FET
295/80R22.5	H	18	19.3	41.5	11.8	9.00, 8.25	499	31078	\$673.13	\$45.08

(1) "No bus shall be operated with regrooved, recapped or retreaded tires on the front wheels." US Code of Federal Regulations: Title 49, Transportation; Part 393.75.  
 \* Tire meets SmartWay<sup>®</sup> standards and is pending SmartWay verification.



**X<sup>®</sup> MULTI™ ENERGY Z**

REGIONAL & LINE HAUL

**Engineered for SmartWay<sup>®</sup> fuel efficiency,<sup>(1)</sup> long tread life and durability in regional and emerging super regional applications**

- 15% reduction in rolling resistance<sup>(2)</sup> from Michelin's new Energy Casing. The Energy Casing delivers a cool running bead and sidewall for lower rolling resistance and improved fuel efficiency
- No compromise fuel efficiency and tread life comes from use of Dual Compound Tread technology, featuring a top mileage layer above a bottom fuel and durability layer
- Excellent mileage comes from using the Dual Compound Tread, and a specifically designed tread sculpture, that delivers outstanding mileage in regional and emerging super regional applications



SmartWay<sup>®</sup> Verified

SIZE	Load Range	Original Tread Depth 32nds	Loaded Radius in.	Overall Diameter in.	Overall Width in.	Approved Wheels (Measuring wheel listed first.)	Revs Per Mile	MSPN	MEMBER PRICE	FET
11R22.5 <sup>(3)</sup>	H	20	19.3	41.3	11.2	8.25, 7.50	501	03168	\$516.20	\$29.39
275/80R22.5 <sup>(3)</sup>	H	20	18.8	40.2	11.0	8.25, 7.50	516	26902	\$489.50	\$34.59

(1) Based on industry standard rolling resistance testing of comparable tires or retreads. Actual results may vary, and may be impacted by many factors, to include road conditions, weather and environment, driver performance, etc.  
 (2) Compared to the MICHELIN<sup>®</sup> XZE<sup>®</sup>2 tire based on fleet survey data.  
 (3) Directional tread design.

Note: Wheel listed first is the measuring wheel.  
 Exceeding the lawful speed limit is neither recommended nor endorsed.  
 MICHELIN<sup>®</sup> tires and tubes are subject to a continuous development program. Michelin North America, Inc. reserves the right to change product specifications at any time without notice or obligations.

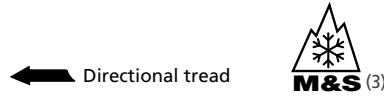
**X<sup>®</sup> MULTI™ Z 17.5**

REGIONAL & URBAN



**All position radial tire optimized for steer axles on 4x2 delivery vehicles in regional and urban applications.**

- 12% Improvement in Rolling Resistance<sup>(1)</sup> – New tread compound for lower rolling resistance and improved wear.
- Improved Grip – 6% greater net contact area (more rubber on the road).<sup>(2)</sup>
- Casing Durability – Extra strong curb guards help protect sidewalls against most impacts and abrasions for long casing life.



SIZE	Load Range	Original Tread Depth 32nds	Loaded Radius in.	Overall Diameter in.	Overall Width in.	Approved Wheels (Measuring wheel listed first.)	Revs Per Mile	MSPN	MEMBER PRICE	FET
<b>215/75R17.5</b>	G	14	14.1	30.3	8.5	6.00, 6.75	686	<b>25151</b>	<b>\$315.95</b>	<b>\$2.36</b>

1. 12% improvement in rolling resistance versus the 215/75R17.5 MICHELIN® XZE@2 LRG tire.  
 2. 6% greater net contact area (rubber on the road for improved grip) versus the 215/75R17.5 MICHELIN® XZE@2 LRG tire.  
 3. 3PMSF (3 Peak Mountain Snow Flake) is from European R117 regulation. It has no regulatory Truck Tire reference in N.A. The tire must score at least 25% better in deep snow traction than the Standard Reference Test Tire on an ECE certified ISO test procedure. 3PMSF always appears with "M+S" mark.

**X<sup>®</sup> MULTI™ Z 19.5**

REGIONAL & BUS / RV



**An all position radial tire optimized for a wide spectrum of regional applications.**

- Increased Fuel Efficiency<sup>(1)</sup> - New tread compound lowers rolling resistance by 9% versus the MICHELIN® XZE®2+ tire.<sup>(2)</sup>
- Reduced Irregular Wear - Directional tread design helps to reduce irregular wear.
- Enhanced Casing Life - Groove bottom protectors and stone ejectors help to reduce stone drilling to extend casing life.
- Extended Casing Life - Four-belt package helps to protect against shocks, impacts and road hazards.



SIZE	Load Range	Original Tread Depth 32nds	Loaded Radius in.	Overall Diameter in.	Overall Width in.	Approved Wheels (Measuring wheel listed first.)	Revs Per Mile	MSPN	MEMBER PRICE	FET
<b>265/70R19.5<sup>(3)</sup></b>	G	16	15.8	34.0	10.2	7.50	609	<b>75319</b>	<b>\$531.20</b>	<b>\$18.99</b>
<b>285/70R19.5<sup>(3)</sup></b>	H	16	16.2	35.2	10.7	7.50	591	<b>31459</b>	<b>\$539.50</b>	<b>\$29.39</b>

1. Based on industry standard rolling resistance testing of comparable tires or retreads. Actual results may vary, and may be impacted by many factors, to include road conditions, weather and environment, driver performance, etc  
 2. 20% increase in tread life and 9% lower rolling resistance is in comparison to the 265/70R19.5 MICHELIN XZE 2+ tire.  
 3. Directional tread design.

Note: Wheel listed first is the measuring wheel.  
 Exceeding the lawful speed limit is neither recommended nor endorsed.  
 MICHELIN® tires and tubes are subject to a continuous development program. Michelin North America, Inc. reserves the right to change product specifications at any time without notice or obligations.





**X MULTIWAY 3D XZE®**

REGIONAL & BUS / RV

**Improved fuel economy and mileage in an all-position tire for regional and coach applications.<sup>(1)</sup>**

- Outstanding driving safety from improved braking, that reduces braking distances by up to 25%<sup>(2)</sup> and excellent traction from full-depth Delta Sipes that deliver improved grip<sup>(3)</sup> in challenging conditions.
- Outstanding fuel economy delivers 0.2 gallons per 100 miles in fuel savings<sup>(4)</sup>, using an optimized tread design and materials.
- Tread life is improved up to 15% for front tires and 30% for rear tires<sup>(4)</sup> through use of a directional tread and optimized tread design
- Extended casing life through Michelin® exclusive fill-width elastic protector ply, and rectangular bead bundles – providing added casing protection and reduced heat and fatigue.



SIZE	Load Range	Original Tread Depth 32nds	Loaded Radius in.	Overall Diameter in.	Overall Width in.	Approved Wheels (Measuring wheel listed first.)	Revs Per Mile	MSPN	MEMBER PRICE	FET
<b>295/80R22.5</b>	H	19	19.2	41.5	11.7	8.25 <sup>(5)</sup> , 9.00	501	<b>07719</b>	<b>\$712.14</b>	<b>\$40.92</b>

(1) "No bus shall be operated with regrooved, recapped or retreaded tires on the front wheels." US Code of Federal Regulations: Title 49, Transportation; Part 393.75.  
 (2) Internal Michelin study. Vehicle fitted with MICHELIN® X® Multiway™ 3D XZE tires two-thirds worn compared with similarly worn MICHELIN® XZE®2+ tires for emergency braking (18 mph to 0 mph) on a wet, smooth, concrete surface.  
 (3) Compared to MICHELIN® XZE®2+ tire.  
 (4) Internal Michelin study. MICHELIN® X® Multiway™ 3D XZE® tire compared with MICHELIN® XZE®2+ tire.  
 (5) For use with 8.25 x 22.5 wheels, consult Michelin.  
 (6) 3PMSF (3 Peak Mountain Snow Flake) is from European R117 regulation. It has no regulatory Truck Tire reference in N.A. The tire must score at least 25% better in deep snow traction than the Standard Reference Test Tire on an ECE certified ISO test procedure. 3PMSF always appears with "M+S" mark.

**X MULTIWAY HD XZE®**

REGIONAL



**Improved mileage and exceptional handling, this all position tire delivers a smooth quiet ride and long life for heavy delivery vehicles in regional and suburban service.**

- Improved load carrying capacity and longevity provided by Michelin's patented InfiniCoil™.
- Enhanced vehicle stability and even wear with a 7% wider footprint increasing total rubber on the road by 11% versus the MICHELIN® XFE™ tire.
- Excellent mileage and even wear provided by chip & cut resistant tread compounds.
- Improved fuel efficiency due to a 13% reduction in rolling resistance.<sup>(1)</sup>
- Resistant to aggressions, impacts and shocks through robust 5 belt casing design.



SIZE	Load Range	Original Tread Depth 32nds	Loaded Radius in.	Overall Diameter in.	Overall Width in.	Approved Wheels (Measuring wheel listed first.)	Revs Per Mile	MSPN	MEMBER PRICE	FET
<b>385/65R22.5</b>	L	19	19.6	42.4	15.1	11.75, 12.25	490	<b>26281</b>	<b>\$698.86</b>	<b>\$35.44</b>

(1) Based on commissioned third-party green house gas testing comparing the MICHELIN® X® MULTIWAY™ HD XZE® to the MICHELIN® XFE™. Actual on-road results may vary. Note: Wheel listed first is the measuring wheel.

Note: Wheel listed first is the measuring wheel.  
 Exceeding the lawful speed limit is neither recommended nor endorsed.  
 MICHELIN® tires and tubes are subject to a continuous development program. Michelin North America, Inc. reserves the right to change product specifications at any time without notice or obligations.



**XFE WIDE BASE STEER**

REGIONAL & LINE HAUL

**Wide base radial designed to deliver high mileage and a smooth quiet ride on heavy steer axle fitments in both regional and highway service**

- Dual compound tread rubber helps ensure cool operating temperatures, while abrasion-resistant rubber compound helps keep tire wear rate low
- Deep, wide channels help provide excellent water evacuation throughout the life of the tire
- Lateral siping along rib edges help enhance traction and braking in adverse weather conditions
- Robust crown design with four-steel belt package



SIZE	Load Range	Original Tread Depth 32nds	Loaded Radius in.	Overall Diameter in.	Overall Width in.	Approved Wheels (Measuring wheel listed first.)	Revs Per Mile	MSPN	MEMBER PRICE	FET
425/65R22.5	L	21	20.6	44.5	16.6	13.00, 12.25	468	11829	\$785.18	\$74.66

**XZE<sup>®</sup> 2+**

REGIONAL & BUS / RV



**All-position radial optimized for steer axles in regional and limited highway service**

- Buttressed shoulder helps resist wear in high scrub applications
- Full depth sipes offer enhanced traction throughout the usable tire life
- Full-width protector ply helps protect the working plies from bruises and penetrations
- European design



SIZE	Load Range	Original Tread Depth 32nds	Loaded Radius in.	Overall Diameter in.	Overall Width in.	Approved Wheels (Measuring wheel listed first.)	RPM	MSPN	MEMBER PRICE	FET
275/70R22.5	J	19	17.6	38.0	10.9	7.50, 8.25	545	78395	\$511.70	\$32.51

Note: Wheel listed first is the measuring wheel.  
 Exceeding the lawful speed limit is neither recommended nor endorsed.  
 MICHELIN® tires and tubes are subject to a continuous development program. Michelin North America, Inc. reserves the right to change product specifications at any time without notice or obligations.

**XZE®**

REGIONAL & BUS / RV



**Exceptional all-position radial with extra-wide, extra-deep tread designed to help deliver our best wear in high scrub applications**

- Beefy, buttressed shoulders help resist tearing and accelerated wear in high scrub applications
- Extra strong curb guards help protect sidewalls against most impacts and abrasions for long casing life
- Groove bottom protectors help deliver additional defense against stone drilling
- Application specific high scrub compound (chip and cut resistance in LRH versions with \* designation) make the MICHELIN® XZE® tire our longest wearing regional steer tire
- Deep, wide tread and optimized footprint shape help deliver long, even tread wear



SIZE	Load Range	Original Tread Depth 32nds	Loaded Radius in.	Overall Diameter in.	Overall Width in.	Approved Wheels (Measuring wheel listed first.)	Revs Per Mile	MSPN	MEMBER PRICE	FET
<b>225/70R19.5</b>	G	17	14.9	32.2	8.9	6.00, 6.75	646	<b>91043</b>	<b>\$333.75</b>	<b>\$4.44</b>
<b>245/70R19.5</b>	H	18	15.6	33.6	9.7	6.75, 7.50	619	<b>75997</b>	<b>\$351.55</b>	<b>\$13.61</b>
<b>10R22.5</b>	G	21	18.7	40.1	10.2	6.75, 7.50, 8.25	517	<b>99141</b>	<b>\$477.30</b>	<b>\$20.51</b>
<b>12R22.5 *</b>	H	22	19.8	42.6	11.4	8.25, 9.00	486	<b>85335</b>	<b>\$609.65</b>	<b>\$36.76</b>
<b>255/70R22.5 *</b>	H	18	17.2	36.7	10.2	8.25, 7.50	563	<b>61737</b>	<b>\$458.35</b>	<b>\$18.99</b>
<b>275/80R22.5</b>	H	22	18.7	40.2	11.1	8.25, 7.50	516	<b>01637</b>	<b>\$493.95</b>	<b>\$34.59</b>

\* With chip and cut resistant tread compound.

**XZE®2**

REGIONAL



**All-position radial optimized for steer axles in regional and limited highway service**

- Buttressed shoulder helps resist wear in high scrub applications
- Full depth sipes offer enhanced traction throughout the usable tire life
- Full-width protector ply helps protect the working plies from bruises and penetrations
- European design



SIZE	Load Range	Original Tread Depth 32nds	Loaded Radius in.	Overall Diameter in.	Overall Width in.	Approved Wheels (Measuring wheel listed first.)	RPM	MSPN	MEMBER PRICE	FET
<b>305/75R24.5</b>	J	22	19.8	42.7	11.6	8.25	486	<b>67251</b>	<b>\$832.46</b>	<b>\$45.08</b>

Note: Wheel listed first is the measuring wheel.  
 Exceeding the lawful speed limit is neither recommended nor endorsed.  
 MICHELIN® tires and tubes are subject to a continuous development program. Michelin North America, Inc. reserves the right to change product specifications at any time without notice or obligations.



**XZE 2™ (Standard Sizes)**

REGIONAL & BUS / RV

**Exceptional, regional, all-position radial with extra-wide, extra-deep tread designed to help deliver our best wear in high scrub applications**

- Enhanced application specific compound to promote resistance to aggression and longer tread life
- 6% wider tread for improved wear and handling <sup>(1)</sup>
- *Matrix™* Siping technology and micro sipes protect against irregular wear
- Zig-zag grooves and sipes help increase traction in new and worn tire conditions
- North American design



SIZE	Load Range	Original Tread Depth 32nds	Loaded Radius in.	Overall Diameter in.	Overall Width in.	Approved Wheels (Measuring wheel listed first.)	RPM	MSPN	MEMBER PRICE	FET
11R22.5	G	22	19.3	41.3	11.2	8.25, 7.50	501	78390	\$485.05	\$25.23
11R22.5	H	22	19.2	41.4	11.3	8.25, 7.50	501	67042	\$502.85	\$29.39
275/80R22.5	G	22	18.6	40.2	11.1	8.25, 7.50	517	55895	\$474.15	\$25.23
11R24.5	G	22	20.3	43.5	11.1	8.25, 7.50	476	91867	\$508.95	\$29.39
11R24.5	H	22	20.3	43.5	11.1	8.25, 7.50	476	88507	\$526.35	\$34.59
275/80R24.5	G	22	19.3	41.3	10.8	8.25, 7.50	501	75519	\$500.25	\$25.23

(1) When compared to MICHELIN® XZE® tire.



**X ONE® XZU® S**

URBAN & REGIONAL

**Michelin's all-position radial innovation designed for significant weight and fuel savings<sup>(1)</sup> in urban regional operations**

- Long tread life and outstanding scrub resistance in urban/regional service with 23/32nd original tread depth of application specific compound
- Flat, stable contact area for long, even wear provide by Michelin's Infini-Coil Technology™, featuring a 1/4 mile of steel cable to help eliminate casing growth
- Enhanced protection against stone drilling from variable pitch groove walls and groove bottom protectors in all grooves
- Great bead durability and resistance to heat from reinforced bead package featuring a wide metallic chafer



SIZE	Load Range	Original Tread Depth 32nds	Loaded Radius in.	Overall Diameter in.	Overall Width in.	Approved Wheel	Revs Per Mile	MSPN	MEMBER PRICE	FET
455/55R22.5	M	23	19.4	41.9	17.8	14.00	496	28513	\$1,008.00	\$38.75

(1) Based on industry standard rolling resistance testing of comparable tires or retreads. Actual results may vary, and may be impacted by many factors, to include road conditions, weather and environment, driver performance, etc.

Note: Wheel listed first is the measuring wheel.

Exceeding the lawful speed limit is neither recommended nor endorsed.

MICHELIN® tires and tubes are subject to a continuous development program. Michelin North America, Inc. reserves the right to change product specifications at any time without notice or obligations.



**XZU®S 2**

URBAN



**Next generation all-position tire with high carrying capacity designed for exceptional treadlife in high scrub urban applications such as waste vehicles**

- Up to 20% increase in removal mileage<sup>(1)</sup> due to new 4-rib tread design
- Improved retreadability<sup>(1)</sup> due to a more robust tread design
- Increased resistance<sup>(1)</sup> to high brake temperatures common in urban stop/start service due to optimized bead design



SIZE	Load Range	Original Tread Depth 32nds	Loaded Radius in.	Overall Diameter in.	Overall Width in.	Approved Wheel	Revs Per Mile	MSPN	MEMBER PRICE	FET
<b>315/80R22.5</b>	L	23	19.6	42.8	12.5	9.00, 8.25 <sup>(2)</sup>	488	<b>77510</b>	<b>\$729.80</b>	<b>\$61.43</b>

(1) When compared with MICHELIN® XZU®S tire.

**X® INCITY™ Z**

URBAN



**Improved mileage<sup>(1)</sup> and durability in an all-position tire designed for the challenges of urban conditions<sup>(3)</sup>**

- 20% additional mileage<sup>(2)</sup> delivered using a combination of a durable scrub resistant compound, a wear resistant tread pattern, and a wide footprint
- Casing life is extended with sidewalls that are 20% thicker vs. MICHELIN® XZU®2 tire, providing strong protection against shocks
- Outstanding traction and handling throughout the life of the tire comes from the use of *Matrix™* Sipes
- Excellent fuel efficiency comes from an optimized tread design, that combines compound and tread pattern, to delivers low rolling resistance without compromising tread life



SIZE	Load Range	Original Tread Depth 32nds	Loaded Radius in.	Overall Diameter in.	Overall Width in.	Approved Wheels (Measuring wheel listed first.)	Revs Per Mile	MSPN	MEMBER PRICE	FET
<b>11R22.5</b> <sup>(3, 4)</sup>	H	20	19.4	41.8	11.1	8.25	500	<b>13712</b>	<b>\$634.95</b>	<b>\$32.51</b>
<b>275/70R22.5</b> <sup>(3)</sup>	J	21	17.7	38.1	11.4	8.25, 7.50	542	<b>59714</b>	<b>\$541.99</b>	<b>\$32.51</b>
<b>305/70R22.5</b> <sup>(3, 4)</sup>	L	22	18.4	39.5	12.3	9.00, 8.25	525	<b>02348</b>	<b>\$729.57</b>	<b>\$43.00</b>
<b>305/85R22.5</b> <sup>(3)</sup>	J	24	20.0	42.7	11.7	9.00, 8.25	485	<b>36530</b>	<b>\$835.81</b>	<b>\$40.92</b>

(1) Compared to MICHELIN® XZU®2 and XZU®3 tires.

(2) When compared to MICHELIN® XZU®2 (12R22.5) and XZU®3 (305/85R22.5) tires vs MICHELIN® X® INCITY™ Z tires (305/70R22.5) in direct comparison fleet testing.

(3) "No bus shall be operated with regrooved, recapped or retreaded tires on the front wheels." US Code of Federal Regulations: Title 49, Transportation; Part 393.75.

(4) 3PMSF (3 Peak Mountain Snow Flake) is from European R117 regulation. It has no regulatory Truck Tire reference in N.A. The tire must score at least 25% better in deep snow traction than the Standard Reference Test Tire on an ECE certified ISO test procedure. 3PMSF always appears with "M+S" mark.

Note: Wheel listed first is the measuring wheel.

Exceeding the lawful speed limit is neither recommended nor endorsed.

MICHELIN® tires and tubes are subject to a continuous development program. Michelin North America, Inc. reserves the right to change product specifications at any time without notice or obligations.



## X<sup>®</sup> INCITY™ Z SL

**URBAN**

An all-position tire designed for the challenges of urban transit operations. This is a Single Life tire that offers optimized mileage and durability.

- Durable and Dependable - Designed to withstand tough conditions with extra thick sidewalls that helps to protect against shocks.
- Optimized Tread Life - Longer tread life with scrub resistant compound which helps to fight irregular treadwear in urban bus conditions.\*
- Driver Confidence - Outstanding traction with *Matrix™* Siping which provides inter-locking action which offers excellent traction and even wear.
- Outstanding Fuel Efficiency - Low rolling resistance without compromising tread life. Compounds and tread pattern combine to deliver outstanding fuel efficiency and mileage for urban applications.



SIZE	Load Range	Original Tread Depth 32nds	Loaded Radius in.	Overall Diameter in.	Overall Width in.	Approved Wheels (Measuring wheel listed first.)	Revs Per Mile	MSPN	MEMBER PRICE	FET
<b>305/85R22.5</b>	J	24	20.0	42.7	11.7	9.00, 8.25	485	<b>62156</b>	<b>\$835.81</b>	<b>\$40.92</b>

\* Urban Transit buses fitted with 12R22.5 or 305/85 dimensions should only use the MICHELIN<sup>®</sup> X<sup>®</sup> INCITY™ Z or X<sup>®</sup> INCITY™ Z SL tires.

Note: Wheel listed first is the measuring wheel.

Exceeding the lawful speed limit is neither recommended nor endorsed.

MICHELIN<sup>®</sup> tires and tubes are subject to a continuous development program. Michelin North America, Inc. reserves the right to change product specifications at any time without notice or obligations.



**X ONE® XZY® 3**

ON/OFF ROAD

**MICHELIN® all-position radial innovation designed for significant weight and fuel savings<sup>(1)</sup> in on/off road operations**

- Long tread life and outstanding chip and cut resistance in on/off road service with 23/32nds original tread depth of application specific compound
- Flat, stable contact area for long, even wear provided by Michelin's Infini-Coil Technology™, featuring a 1/4 mile of steel cable to help eliminate casing growth
- Enhanced protection against stone drilling from variable pitch groove walls and groove bottom protectors in center grooves
- Great bead durability and resistance to heat from reinforced bead package featuring a wide metallic chafer



SIZE	Load Range	Original Tread Depth 32nds	Loaded Radius in.	Overall Diameter in.	Overall Width in.	Approved Wheel	Revs Per Mile	MSPN	MEMBER PRICE	FET
455/55R22.5	M	23	19.4	41.9	17.8	14.00 <sup>(2)</sup>	496	11629	\$1,008.00	\$38.75

(1) Based on industry standard rolling resistance testing of comparable tires or retreads. Actual results may vary, and may be impacted by many factors, to include road conditions, weather and environment, driver performance, etc.  
 (2) For use on 13" wheel, consult Michelin.

**X® WORKS™ Z**

ON/OFF ROAD



**Our toughest all-position, on/off-road tire just got tougher.<sup>(1)</sup> With a 50% wider protector ply vs. leading competitors<sup>(2)</sup> and 5% more removal miles vs. the MICHELIN® XZY®3 tire it replaces, this tire provides unsurpassed durability against road hazards—guaranteed.**

- Tougher casing durability to help increase uptime and capping due to a 50% wider groove-to-groove protector ply and a thicker layer of shock absorbing cushion gum<sup>(2)</sup>
- 5% more removal mileage is delivered through a tough chip and cut resistant compound that fights tread abrasion and a wide footprint that promotes even wear<sup>(1)</sup>
- Dual layered defense against stone retention and stone-drilling, with V-channels and groove bottom protectors
- Strong, thick sidewall features a double treatment of TW6 Ozone Resistor for increased protection against ozone cracking and to fight impacts
- Backed by Michelin's six-month worry-free road hazard guarantee<sup>(3)</sup>



SIZE	Load Range	Original Tread Depth 32nds	Loaded Radius in.	Overall Diameter in.	Overall Width in.	Approved Wheels (Measuring wheel listed first.)	Revs Per Mile	MSPN	MEMBER PRICE	FET
11R22.5	H	24	19.6	41.8	11.3	8.25, 7.50	495	15701	\$556.25	\$29.39
12R22.5	H	24	20.1	42.9	11.4	8.25, 9.00	483	11073	\$645.25	\$36.76
315/80R22.5	L	23	19.8	42.9	12.5	9.00	485	64204	\$739.50	\$52.83
11R24.5	H	24	20.5	43.7	11.4	8.25, 7.50	473	78261	\$578.50	\$34.59

(1) Results based on three small-scale internal field tests using customer fleet vehicles vs. MICHELIN® XZY® 3 in size 11R24.5 LRH. Actual results may vary.  
 (2) Protector ply width & cushion gum thickness compared to Bridgestone® M843 & M853, and Goodyear® G751™ MSA Duraseal in size 11R22.5 LRH.  
 (3) Contact your local Michelin representative for details. Michelin reserves the right to modify or discontinue this program at any time for any reason without prior notice.

Note: Wheel listed first is the measuring wheel.  
 Exceeding the lawful speed limit is neither recommended nor endorsed.  
 MICHELIN® tires and tubes are subject to a continuous development program. Michelin North America, Inc. reserves the right to change product specifications at any time without notice or obligations.

**XZY® 3**

ON/OFF ROAD



**All-position radial designed for exceptional wear and traction in mixed on/off road service**

- 24/32nd tread depth for long life
- Tread compound formulation offers excellent protection against aggression, chipping and scaling
- Maximized soft soil and mud traction throughout the tire life as ribs and shoulder edges retain their aggressive notches
- Rounded bead toe for easy mount and demount as well as help in reducing bead damage



SIZE	Load Range	Original Tread Depth 32nds	Loaded Radius in.	Overall Diameter in.	Overall Width in.	Approved Wheel	Revs Per Mile	MSPN	MEMBER PRICE	FET
<b>12R24.5</b>	H	24	21.0	44.9	11.5	8.25, 9.00	461	<b>47951</b>	<b>\$657.00</b>	<b>\$40.92</b>

**XZY® 3 WIDE BASE**

ON/OFF ROAD



**Exceptional all-position wide base radial designed for heavy front axle service in mixed service applications**

- Improved traction in soft soil and mud promoted by aggressive new tread design<sup>(1)</sup>
- Improved floatation offered by wider tread (almost 1 inch wider than MICHELIN® XZY® Wide Base tire)
- Great resistance to shocks, bruising and penetrations fostered by new four-belt design featuring full-width elastic protector ply
- Added sidewall and shoulder protection from thicker rubber and new aggressive shoulder design
- Improved wet traction throughout the tread life cultivated by deep, wide circumferential grooves and minimized bridging between tread elements



SIZE	Load Range	Original Tread Depth 32nds	Loaded Radius in.	Overall Diameter in.	Overall Width in.	Approved Wheels (Measuring wheel listed first.)	Revs Per Mile	MSPN	MEMBER PRICE	FET
<b>385/65R22.5</b>	J	22	19.6	42.4	14.9	11.75, 12.25	491	<b>53779</b>	<b>\$692.30</b>	<b>\$27.74</b>
<b>425/65R22.5</b>	L	23	20.6	44.7	16.6	13.00, 12.25	465	<b>40321</b>	<b>\$782.60</b>	<b>\$37.33</b>
<b>445/65R22.5</b>	L	23	21.1	45.8	17.8	14.00, 13.00	455	<b>83691</b>	<b>\$842.80</b>	<b>\$43.94</b>

(1) When compared with MICHELIN® XZY® Wide Base tire.

Note: Wheel listed first is the measuring wheel.  
 Exceeding the lawful speed limit is neither recommended nor endorsed.  
 MICHELIN® tires and tubes are subject to a continuous development program. Michelin North America, Inc. reserves the right to change product specifications at any time without notice or obligations.





**XZL+™**

**OFF ROAD & ON/OFF ROAD**

**All-terrain, all-position radial for special service in extremely demanding applications**

- Self-cleaning, open shoulder tread design features offset elements to help enhance traction and floatation capabilities on varied terrains including snow, sand, mud and highway
- Non-directional design for versatility
- Tread pattern designed for cooler operation and robust performance
- Tubeless construction compatible with Automated Tire Inflation System (ATIS) and bead locks



SIZE	Load Range	Original Tread Depth 32nds	Loaded Radius in.	Overall Diameter in.	Overall Width in.	Approved Wheels (Measuring wheel listed first.)	Revs Per Mile	MSPN	LIST PRICE	FET
<b>14.00R20</b>	M	23	22.8	49.5	15.2	10.00W	421	<b>71701</b>	<b>\$1,734.70</b>	<b>\$35.44</b>
<b>395/85R20</b>	J	26	21.1	46.3	15.4	10.00W, 10.00, 10.00V	451	<b>94675</b>	<b>\$1,777.86</b>	<b>\$41.58</b>

**XZL™**

**OFF ROAD & ON/OFF ROAD**



**All-terrain, all-position radial for special service such as Emergency Response vehicles**

- Self-cleaning, open shoulder tread design features offset elements to help enhance traction and floatation capabilities on varied terrains including snow, sand, mud and highway
- Non-directional design for versatility
- Full-width steel belts and elastic protector ply help provide added casing protection against most off road hazards
- Tubeless construction compatible with Automated Tire Inflation System (ATIS) and bead locks



SIZE	Load Range	Original Tread Depth 32nds	Loaded Radius in.	Overall Diameter in.	Overall Width in.	Approved Wheels (Measuring wheel listed first.)	Revs Per Mile	MSPN	LIST PRICE	FET
<b>12.00R20</b>	J	19	20.7	44.5	12.2	8.50, 8.00, 7.50	465	<b>02383</b>	<b>\$1,339.62</b>	<b>\$45.08</b>
<b>14.00R20</b>	M	23	22.8	49.5	15.1	10.00W, 10.00, 10.00V	421	<b>59177</b>	<b>\$1,701.50</b>	<b>\$35.44</b>
<b>16.00R20</b>	M	34	23.9	52.9	17.2	10.00W, 10.00V, 10.00	397	<b>06306</b>	<b>\$2,426.09</b>	<b>\$52.16</b>
<b>335/80R20</b>	F	18	18.6	40.8	13.6	11-20, 12-20	512	<b>62159</b>	<b>\$814.23</b>	<b>\$10.25</b>
<b>365/80R20</b>	L	20	19.7	43.1	14.6	11.00	483	<b>97627</b>	<b>\$1,178.60</b>	<b>\$20.46</b>
<b>365/85R20</b>	J	28	20.4	45.0	14.5	9.00, 10.00	465	<b>56389</b>	<b>\$1,568.70</b>	<b>\$34.44</b>
<b>395/80R20<sup>(1)</sup></b>	J	20	21.1	46.3	15.3	10.00	452	<b>83808</b>	<b>\$1,707.18</b>	<b>\$41.58</b>
<b>395/85R20</b>	J	33	21.3	46.8	15.3	10.00W, 10.00, 10.00V	447	<b>54331</b>	<b>\$1,777.86</b>	<b>\$41.58</b>
<b>24R21</b>	H	31	24.8	54.6	23.9	18.00	383	<b>76025</b>	<b>\$3,402.17</b>	<b>\$57.65</b>

(1) XZL2™ tread design.

Note: Wheel listed first is the measuring wheel.

Exceeding the lawful speed limit is neither recommended nor endorsed.

MICHELIN® tires and tubes are subject to a continuous development program. Michelin North America, Inc. reserves the right to change product specifications at any time without notice or obligations.



**XML™**

**ON/OFF ROAD APPLICATIONS**

**All-terrain, all-position radial optimized for soft- soil/ mud mobility**

- All-terrain non-directional computer enhanced tread design delivers exceptional soft soil mobility, through enhanced self-cleaning capabilities
- Full-width belt protection and elastic protector ply helps protect the casing from bruising and penetrations
- Offset shoulder designed for increased traction in soft soil
- Radial casing design optimized to operate at lower pressures to offer exceptional mobility and enhanced enveloping capabilities to resist impacts



SIZE	Load Range	Original Tread Depth 32nds	Loaded Radius in.	Overall Diameter in.	Overall Width in.	Approved Wheels (Measuring wheel listed first.)	Revs Per Mile	MSPN	MEMBER PRICE	FET
<b>325/85R16</b>	D	21	17.7	38.7	12.9	9.00	540	<b>37984</b>	<b>\$1,022.56</b>	<b>\$7.42</b>
<b>395/85R20<sup>(1)</sup></b>	G	30	21.3	46.7	15.4	10.0W, 10.00, 10.00V	448	<b>99131</b>	<b>\$1,467.44</b>	<b>\$31.66</b>

**XZL™ WIDE BASE**

**OFF ROAD & ON/OFF ROAD**



**All-position wide base radial designed for optimized on/off road traction**

- Self-cleaning, open-shoulder tread design features offset elements to help enhance traction and floatation capabilities
- Stable block design helps ensure a consistent footprint, even in free rolling positions, to help deliver smooth even wear and a quiet ride
- Deep, application specific compounds help provide resistance to aggressions and abrasion common in off road service
- Full-width steel belts and elastic protector ply help protect the casing against shocks, bruising and penetrations
- Conventional 22.5" commercial sizes



SIZE	Load Range	Original Tread Depth 32nds	Loaded Radius in.	Overall Diameter in.	Overall Width in.	Approved Wheels (Measuring wheel listed first.)	Revs Per Mile	MSPN	MEMBER PRICE	FET
<b>445/65R22.5</b>	L	27	21.2	46.0	17.6	14.00, 13.00	453	<b>84103</b>	<b>\$927.94</b>	<b>\$41.58</b>

Note: Wheel listed first is the measuring wheel.  
 Exceeding the lawful speed limit is neither recommended nor endorsed.  
 MICHELIN® tires and tubes are subject to a continuous development program. Michelin North America, Inc. reserves the right to change product specifications at any time without notice or obligations.



**X<sup>®</sup> LINE<sup>™</sup> ENERGY D**

LINE HAUL

**SmartWay<sup>®</sup> verified fuel economy with leading tread life and traction in a line haul energy drive tire**

- Fuel efficiency<sup>(1)</sup> provided through Michelin’s use of a Dual Compound Tread, coupling a top fuel and mileage layer, with a cool running bottom layer of tread rubber
- 20% longer tread life<sup>(2)</sup> due to the Dual Compound Tread, a wider footprint and solid shoulder, as well as wear benefits from *Matrix*<sup>™</sup> Siping technology
- Driver confidence due to exceptional handling from MICHELIN<sup>®</sup> *Matrix*<sup>™</sup> Siping technology, providing both traction and stability
- Extended casing life through Michelin exclusive full-width elastic protector ply, and rectangular bead bundles – providing added casing protection and reduced heat and fatigue



**7 Year**

7 YEAR 700,000-MILE  
3-RETREAD LIMITED WARRANTY<sup>(3)</sup>

SmartWay<sup>®</sup>  
Verified

SIZE	Load Range	Original Tread Depth 32nds	Loaded Radius in.	Overall Diameter in.	Overall Width in.	Approved Wheels (Measuring wheel listed first.)	Revs Per Mile	MSPN	MEMBER PRICE	FET
<b>11R22.5</b>	G	23	19.4	41.3	11.2	8.25, 7.50	500	<b>35887</b>	<b>\$513.53</b>	<b>\$25.23</b>
<b>275/80R22.5</b>	G	23	18.9	40.2	11.0	8.25, 7.50	514	<b>36859</b>	<b>\$504.63</b>	<b>\$25.23</b>
<b>275/80R24.5</b>	G	23	19.5	41.3	10.8	8.25, 7.50	499	<b>36992</b>	<b>\$526.88</b>	<b>\$25.23</b>

(1) Based on industry standard rolling resistance testing of comparable tires or retreads. Actual results may vary, and may be impacted by many factors, to include road conditions, weather and environment, driver performance, etc.  
 (2) Compared to the MICHELIN<sup>®</sup> XDA<sup>®</sup> ENERGY tire.  
 (3) 7/7/3 Manufacturer’s Limited Casing Warranty: 7 Year or 700,000 Mile or 3-Retread Limited Warranty for MICHELIN<sup>®</sup> X<sup>®</sup> LINE<sup>™</sup> ENERGY D tire when retreaded by an authorized Michelin Retread Technologies (MRT) Dealer only. See limited warranty for details.

**X ONE<sup>®</sup> LINE<sup>™</sup> ENERGY D**

LINE HAUL



**The most fuel efficient<sup>(1)</sup> drive tire available for North American line haul trucks**

- No compromise fuel efficiency and mileage delivered by the Dual Energy Compound Tread, with a precisely balanced Fuel and Mileage layer on top of a cool running Fuel and Durability layer
- Guaranteed 15% more miles that the MICHELIN<sup>®</sup> X ONE<sup>®</sup> XDA<sup>®</sup> ENERGY tire through performance of the Dual Energy Compound Tread
- Excellent handling due to optimized traction and stability from full depth *Matrix*<sup>™</sup> Sipes
- Extended casing life delivered through the Dual Energy Compound Tread, rectangular bead bundle and full-width elastic protector ply

← Directional tread



SmartWay<sup>®</sup>  
Verified

SIZE	Load Range	Original Tread Depth 32nds	Loaded Radius in.	Overall Diameter in.	Overall Width in.	Approved Wheel	Revs Per Mile	MSPN	MEMBER PRICE	FET
<b>445/50R22.5<sup>(2)</sup></b>	L	24	18.6	40.2	17.1	14.00	517	<b>96678</b>	<b>\$1,023.50</b>	<b>\$31.66</b>

(1) Based on industry standard rolling resistance testing of comparable tires or retreads. Actual results may vary, and may be impacted by many factors, to include road conditions, weather and environment, driver performance, etc.  
 (2) Directional tread design.

Note: Wheel listed first is the measuring wheel.  
 Exceeding the lawful speed limit is neither recommended nor endorsed.  
 MICHELIN<sup>®</sup> tires and tubes are subject to a continuous development program. Michelin North America, Inc. reserves the right to change product specifications at any time without notice or obligations.



**X ONE® XDN®2**

LINE HAUL

**Michelin's longest-wearing, best traction X One® drive tire for highway and regional operations**

- Engineered to replace duals
- Weight savings of approximately 371 lb. per tractor, when compared to the MICHELIN® XDN®2 tire
- Multiple tread compounds to keep the casing cooler and optimize retreadability
- Infini-Coil Technology™ incorporates 1/4 mile of steel cable to stabilize the footprint and minimize casing growth
- Extra wide tread width for excellent stability and long wearlife
- Open shoulder design helps provide exceptional traction on dry, wet and snow covered surfaces



SIZE	Load Range	Original Tread Depth 32nds	Loaded Radius in.	Overall Diameter in.	Overall Width in.	Approved Wheel	Revs Per Mile	MSPN	MEMBER PRICE	FET
<b>445/50R22.5</b>	L	27	18.7	40.4	17.1	14.00	515	<b>36587</b>	<b>\$994.40</b>	<b>\$31.66</b>
<b>455/55R22.5</b>	L	27	19.6	42.4	17.6	14.00	491	<b>31535</b>	<b>\$1,012.00</b>	<b>\$35.44</b>



**XD2®**

LINE HAUL

**Fuel-efficient<sup>(1)</sup>, standard drive tire that helps deliver long, even tread wear and a smooth quiet ride**

- Advanced Technology Compounding helps reduce rolling resistance delivering low fuel costs with no compromise in wet traction, mileage, durability and even wear
- Wide grooves quickly evacuate water for good wet weather handling to foster driver confidence and productivity
- Alternating groove wall angles help resist stone retention and help improve traction throughout the tire's life



SIZE	Load Range	Original Tread Depth 32nds	Loaded Radius in.	Overall Diameter in.	Overall Width in.	Approved Wheels (Measuring wheel listed first.)	Revs Per Mile	MSPN	MEMBER PRICE	FET
<b>255/70R22.5<sup>(1)</sup></b>	H	25	17.4	37.2	10.2	8.25, 7.50	558	<b>74493</b>	<b>\$457.60</b>	<b>\$18.99</b>

(1) Based on industry standard rolling resistance testing of comparable tires or retreads. Actual results may vary, and may be impacted by many factors, to include road conditions, weather and environment, driver performance, etc.

Note: Wheel listed first is the measuring wheel.  
 Exceeding the lawful speed limit is neither recommended nor endorsed.  
 MICHELIN® tires and tubes are subject to a continuous development program. Michelin North America, Inc. reserves the right to change product specifications at any time without notice or obligations.





**XDA® ENERGY +**

LINE HAUL

**Michelin's most fuel-efficient, line haul, dual drive tire.<sup>(1)</sup>**  
 Saves your fleet \$400 annually per truck in fuel by replacing the Bridgestone M710 Ecopia™ tire with the MICHELIN® XDA® ENERGY + tire, when you pay \$2.53 per gallon.<sup>(2)</sup>

- Fuel Savings Limited Guarantee <sup>(3)</sup> – Innovative guarantee brings peace of mind.
- Fuel Efficiency – Helps Lower Fuel Consumption to Reduce Operating Costs. Innovative FuelSaver™ tread compound helps 7% better rolling resistance vs. a leading competitive line haul dual drive tire <sup>(4)</sup> brings new levels of fuel efficiency and saving.
- Mileage – Long Even Wear Helps Reduce Maintenance Costs. Tread design optimized to help provide this long even wear.
- Retreadability – MICHELIN® durable casings designed to provide multiple retreads to help reduce maintenance costs. 7 YEAR / 700,000-MILE / 3-RETREAD Manufacturer's Limited Casing Guarantee to Maximize Your Assets.



7 YEAR 700,000-MILE  
3-RETREAD LIMITED WARRANTY



SIZE	Load Range	Original Tread Depth 32nds	Loaded Radius in.	Overall Diameter in.	Overall Width in.	Approved Wheels (Measuring wheel listed first.)	Revs Per Mile	MSPN	MEMBER PRICE	FET
<b>275/80R22.5</b>	G	23	18.9	40.4	10.9	8.25, 7.50	512	<b>08024</b>	<b>\$510.86</b>	<b>\$25.23</b>

(1) Based on industry standard rolling resistance testing of comparable tires or retreads. Actual results may vary, and may be impacted by many factors, to include road conditions, weather and environment, driver performance, etc.  
 (2) Fuel savings calculated based on replacing the Bridgestone M710 Ecopia™ with the MICHELIN® XDA® Energy+ in (8) drive tire positions on a class 8 tandem-drive axle truck. Calculations also based on the U.S. National average diesel fuel price as of July 31, 2017 for a class 8 tandem-drive axle truck and single tandem axle trailer combination traveling 120,000 miles/year. Actual results may vary, and may be impacted by many factors, to include road conditions, weather, environment, combination of steer and trailer tires used, driving habits, tire size, equipment and maintenance.  
 (3) See your Michelin Representative or [michelintruck.com/reference-materials/manuals-bulletins-and-warranties/](http://michelintruck.com/reference-materials/manuals-bulletins-and-warranties/) for details.  
 (4) Vs. BRIDGESTONE M710 Ecopia™ based on internal rolling resistance tests using ISO 28580 in tire size equivalent 275/80R22.5.



**XDA® 5+**

LINE HAUL

**Our longest wearing line haul drive tire featuring regenerating tread features that deliver excellent traction late in life**

- Extra wide tread width for excellent stability and long wearlife
- Regenerating tread features from MICHELIN® Durable Technologies for excellent traction throughout the life of the tire
- *Matrix*™ Siping technology helps provide exceptional traction on dry and slippery surfaces. The 3D *Matrix*™ sipes lock together for the stability normally associated with solid tread blocks
- Full 30/32nds tread depth helps provide unmatched original treadlife
- Strong, solid shoulders give excellent stability and handling



SIZE	Load Range	Original Tread Depth 32nds	Loaded Radius in.	Overall Diameter in.	Overall Width in.	Approved Wheels (Measuring wheel listed first.)	Revs Per Mile	MSPN	MEMBER PRICE	FET
<b>11R22.5</b>	G	30	19.5	41.7	11.3	8.25, 7.50	497	<b>14003</b>	<b>\$534.00</b>	<b>\$25.23</b>
<b>275/80R22.5</b>	G	30	19.0	40.6	11.1	8.25, 7.50	510	<b>61310</b>	<b>\$525.10</b>	<b>\$25.23</b>
<b>11R24.5</b>	H	30	20.6	43.8	11.3	8.25, 7.50	471	<b>97973</b>	<b>\$574.05</b>	<b>\$34.59</b>
<b>275/80R24.5</b>	G	30	19.7	41.8	10.8	8.25, 7.50	494	<b>01376</b>	<b>\$547.35</b>	<b>\$25.23</b>
<b>305/75R24.5 <sup>(1)</sup></b>	J	30	20.1	43.3	11.5	8.25, 9.00	480	<b>30987</b>	<b>\$937.90</b>	<b>\$45.08</b>

(1) MICHELIN® XDA®5 tread design.

Note: Wheel listed first is the measuring wheel.  
 Exceeding the lawful speed limit is neither recommended nor endorsed.  
 MICHELIN® tires and tubes are subject to a continuous development program. Michelin North America, Inc. reserves the right to change product specifications at any time without notice or obligations.



**XDN®2 / XDN®2 GRIP**

REGIONAL & LINE HAUL

**All weather premium drive tire optimized for exceptional traction and mileage**

- *Matrix™* Siping technology helps provide exceptional traction on dry and slippery surfaces. Over 1,300 biting edges combine to help provide excellent levels of traction while the 3 dimensional *Matrix™* sipes lock together for the stability normally associated with solid tread blocks
- Extra wide tread helps provide stability while helping to improve handling and mileage
- Full 27/32nds tread depth helps provide long original tread life (MICHELIN® XDN®2 Grip tire has 28/32nds original tread depth)
- Wide, open shoulder grooves help deliver additional traction balanced with tread life



1      2 - 315/80R22.5 ← Directional tread

SIZE	Load Range	Original Tread Depth 32nds	Loaded Radius in.	Overall Diameter in.	Overall Width in.	Approved Wheels (Measuring wheel listed first.)	Revs Per Mile	MSPN	MEMBER PRICE	FET
11R22.5 (1)	G	27	19.5	41.7	11.2	8.25, 7.50	496	72805	\$507.30	\$25.23
11R22.5 (1)	H	27	19.5	41.7	11.2	8.25, 7.50	496	64321	\$525.10	\$29.39
12R22.5 (1)	H	27	20.0	42.9	11.3	8.25, 9.00	483	51753	\$605.20	\$36.76
275/80R22.5 (1)	G	27	18.9	40.6	11.0	8.25, 7.50	511	63465	\$498.40	\$25.23
315/80R22.5 (2, 3)	L	28	20.0	43.1	12.5	9.00	486	04355	\$769.85	\$52.83
11R24.5 (1)	H	27	20.5	43.8	11.2	8.25, 7.50	473	87129	\$547.35	\$34.59
275/80R24.5 (1)	G	27	19.6	41.8	10.6	8.25, 7.50	495	75684	\$520.65	\$25.23

(1) MICHELIN® XDN®2 tread design (non-directional).  
 (2) MICHELIN® XDN®2 Grip tread design (directional).  
 (3) 3PMSF (3 Peak Mountain Snow Flake) is from European R117 regulation. It has no regulatory Truck Tire reference in N.A. The tire must score at least 25% better in deep snow traction than the Standard Reference Test Tire on an ECE certified ISO test procedure. 3PMSF always appears with "M+S" mark.

**X® MULTI™ D 19.5**

REGIONAL, LINE HAUL & URBAN



**The MICHELIN® X® MULTI D™ is an open shoulder drive axle radial tire designed for regional applications.**

- Advanced Technology Compound – Results in 13% lower rolling resistance for improved fuel efficiency<sup>(1)</sup>
- Aggressive Tread Design with Semi-Open Shoulder – Provides exceptional traction and driver confidence
- 12% More Surface Contact Area<sup>(2)</sup> – Contributes to tread stability and efficient miles/32nds
- Robust 4 Belt Package – Provides stable footprint and overall durability



← Directional tread



SIZE	Load Range	Original Tread Depth 32nds	Loaded Radius in.	Overall Diameter in.	Overall Width in.	Approved Wheels (Measuring wheel listed first.)	Revs Per Mile	MSPN	MEMBER PRICE	FET
265/70R19.5 (1, 3)	G	16	15.8	34.2	10.3	7.50, 6.75	610	92982	\$547.35	\$18.99
285/70R19.5 (3)	H	17	16.2	35.3	10.7	8.25, 7.50	590	09733	\$556.25	\$23.63

(1) Versus MICHELIN® XDE®2+ tire.  
 (2) The 265/70R19.5 MICHELIN® X® MULTI™ D tread width is .4" greater than its predecessor the MICHELIN® XDE®2+ tire. When combined with the change in tread design the result is a 12% increase in rubber contact area with the road surface for a more sturdy footprint.  
 (3) 3PMSF (3 Peak Mountain Snow Flake) is from European R117 regulation. It has no regulatory Truck Tire reference in N.A. The tire must score at least 25% better in deep snow traction than the Standard Reference Test Tire on an ECE certified ISO test procedure. 3PMSF always appears with "M+S" mark.

Note: Wheel listed first is the measuring wheel.  
 Exceeding the lawful speed limit is neither recommended nor endorsed.  
 MICHELIN® tires and tubes are subject to a continuous development program. Michelin North America, Inc. reserves the right to change product specifications at any time without notice or obligations.



**X<sup>®</sup> MULTI<sup>™</sup> D**

REGIONAL

**The next generation regional drive tire offering first-class tire mileage and excellent scrub resistance with no compromises to traction**

- First-class mileage and scrub resistance due to the use of co-extruded compounds that optimize performance.
- More Grip, Less Slip is provided by the full depth *Matrix*<sup>™</sup> siping combined with the regenerating tread feature. Zero to One The Road 80% faster than a leading competitor.<sup>(1)</sup>
- Excellent traction due to the pass-through open shoulder and *Matrix*<sup>™</sup> Siping and the regenerating tread feature.
- Casing durability is delivered through the use of TW6 OzoneShield<sup>™</sup> technology, cooler running rubber from the co-extrusion process, and a full width protector ply.



SIZE	Load Range	Original Tread Depth 32nds	Loaded Radius in.	Overall Diameter in.	Overall Width in.	Approved Wheels (Measuring wheel listed first.)	Revs Per Mile	MSPN	MEMBER PRICE	FET
11R22.5	G	28	19.5	41.8	11.3	8.25, 7.50	496	33502	\$512.64	\$25.23
11R22.5	H	28	19.6	41.9	11.3	8.25, 7.50	494	80276	\$530.44	\$29.39
275/80R22.5	G	28	19.0	40.5	11.0	8.25, 7.50	510	76710	\$503.74	\$25.23
11R24.5	H	28	20.5	43.8	11.2	8.25, 7.50	472	27287	\$552.69	\$34.59

(1) In a standardized snow test, the 11R22.5 MICHELIN<sup>®</sup> X<sup>®</sup> MULTI<sup>™</sup> D tire travelled 80% further from start versus the 11R22.5 Bridgestone<sup>®</sup> M726 ELA tire. Actual results may vary.

**X<sup>®</sup> MULTI<sup>™</sup> ENERGY D**

REGIONAL



**Leading edge, ultra fuel-efficient<sup>(1)</sup> drive tire designed for optimized traction and treadlife in the regional and emerging super regional applications**

- Exceptional fuel-efficiency<sup>(1)</sup> and tread/casing life due to a Dual Energy Compound tread, which provides low rolling resistance, anti-scrub properties and minimizes internal casing temperatures
- Outstanding traction and even wear are conveyed by the inter-locking action of full depth *Matrix*<sup>™</sup> siping
- Long tread life and stability are enabled by a wide, optimized footprint, which eliminates the need for additional tread depth
- Additional traction is provided in adverse weather conditions due to shoulder siping



SIZE	Load Range	Original Tread Depth 32nds	Loaded Radius in.	Overall Diameter in.	Overall Width in.	Approved Wheels (Measuring wheel listed first.)	Revs Per Mile	MSPN	MEMBER PRICE	FET
11R22.5	G	24	19.4	41.4	11.3	8.25, 7.50	499	58300	\$513.53	\$25.23
275/80R22.5	G	24	18.9	40.2	11.0	8.25, 7.50	514	63049	\$504.63	\$25.23
11R24.5	H	24	20.4	43.4	11.3	8.25, 7.50	476	61739	\$535.78	\$34.59

(1) Based on industry standard rolling resistance testing of comparable tires or retreads. Actual results may vary, and may be impacted by many factors, to include road conditions, weather and environment, driver performance, etc.

Note: Wheel listed first is the measuring wheel.  
Exceeding the lawful speed limit is neither recommended nor endorsed.  
MICHELIN<sup>®</sup> tires and tubes are subject to a continuous development program. Michelin North America, Inc. reserves the right to change product specifications at any time without notice or obligations.



**X® MULTIWAY XD**

REGIONAL

**The versatile, all-season drive tire for all types of roads**

- Excellent durability due to a new damage-resistant rubber and a new directional tread pattern that reduces stone retention
- Up to 19% more grip on wet and slippery roads and improved braking distance after 2/3 worn<sup>(1)</sup>, due to double wave and raindrop sipe technologies
- Up to 30% increased mileage<sup>(1)</sup> from a deeper, wider tread with MICHELIN® Durable Technologies



← Directional tread

SIZE	Load Range	Original Tread Depth 32nds	Loaded Radius in.	Overall Diameter in.	Overall Width in.	Approved Wheels (Measuring wheel listed first.)	Revs Per Mile	MSPN	MEMBER PRICE	FET
<b>295/60R22.5</b> <sup>(2, 4)</sup>	J	23	16.9	36.5	11.4	9.00, 9.75 <sup>(3)</sup>	569	<b>06376</b>	<b>\$598.43</b>	<b>\$36.76</b>

(1) When compared to the MICHELIN® XDE®2+ tire.  
 (2) Directional tread design.  
 (3) For further instructions on proper usage of the 295/60R22.5, consult Michelin.  
 (4) 3PM5F (3 Peak Mountain Snow Flake) is from European R117 regulation. It has no regulatory Truck Tire reference in N.A. The tire must score at least 25% better in deep snow traction than the Standard Reference Test Tire on an ECE certified ISO test procedure. 3PM5F always appears with "M+S" mark.



**XDE® M/S**

REGIONAL

**Open shoulder drive axle radial engineered for excellent mileage and traction across a wide range of applications**

- Aggressive open shoulder design with deep tapered lateral grooves help provide outstanding year round traction and excellent water and mud dispersion
- Application specific compounds help resist the effects of scrubbing in standard LRG sizes. LRG sizes with a \* designation feature for chip and cut resistant compound
- Full depth sipes help provide additional traction on wet and slippery surfaces in LRG sizes
- Offset shoulder blocks for excellent traction in mud and soft soil conditions



SIZE	Load Range	Original Tread Depth 32nds	Loaded Radius in.	Overall Diameter in.	Overall Width in.	Approved Wheels (Measuring wheel listed first.)	Revs Per Mile	MSPN	MEMBER PRICE	FET
<b>10R22.5</b>	G	23	18.8	40.2	10.2	6.75, 7.50, 8.25	515	<b>87357</b>	<b>\$425.00</b>	<b>\$20.51</b>
<b>11R22.5</b>	G	26	19.4	41.6	11.2	8.25, 7.50	498	<b>73493</b>	<b>\$476.00</b>	<b>\$25.23</b>
<b>11R22.5 *</b>	H	28	19.4	41.7	11.2	8.25, 7.50	497	<b>73927</b>	<b>\$493.00</b>	<b>\$29.39</b>
<b>11R24.5 *</b>	H	28	20.4	43.9	11.1	8.25, 7.50	474	<b>46695</b>	<b>\$510.00</b>	<b>\$34.59</b>

\* With chip and cut resistant tread compound.

Note: Wheel listed first is the measuring wheel.  
 Exceeding the lawful speed limit is neither recommended nor endorsed.  
 MICHELIN® tires and tubes are subject to a continuous development program. Michelin North America, Inc. reserves the right to change product specifications at any time without notice or obligations.





**XDS®**

REGIONAL

**Drive axle radial for year-round traction and optimized for severe winter conditions in regional and on/off road applications**

- Rugged directional tread design helps boost snow and ice traction and helps reduce heel/toe wear typically associated with open shoulder designs.
- Full-width zigzag sipes interlock to enhance block stability under torque while helping to provide extra bite, especially in deep snow.
- Deep V-shaped lateral shoulder grooves help to maximize mud and snow evacuation.
- Extra-robust four-belt crown package with extra-wide working plies help deliver exceptional casing life.
- Full-width elastic protector ply and extra-thick rubber under the tread help protect the working plies from shocks, bruises and impacts.

← Directional tread



SIZE	Load Range	Original Tread Depth 32nds	Loaded Radius in.	Overall Diameter in.	Overall Width in.	Approved Wheels (Measuring wheel listed first.)	Revs Per Mile	MSPN	MEMBER PRICE	FET
<b>12R22.5</b> (1)	H	26	19.9	42.8	11.8	8.25, 9.00	484	<b>62208</b>	<b>\$658.24</b>	<b>\$36.76</b>

(1) Directional tread design.



**XDS®2 (19.5" Wheel)**

REGIONAL

**The drive axle radial for year-round traction, optimized for winter conditions and limited all-position service**

- Outstanding traction on wet and slippery surfaces from over 700 3D *Matrix™* sipes
- Optimized for stone rejection with variable angled groove walls and groove bottom protectors
- Traction in demanding surface conditions from open shoulder design
- Protection from impacts through robust curb guard features and sidewall scallops
- Self-cleaning tread pattern through zig-zag groove angles and wide, open shoulder grooves



SIZE	Load Range	Original Tread Depth 32nds	Loaded Radius in.	Overall Diameter in.	Overall Width in.	Approved Wheels (Measuring wheel listed first.)	Revs Per Mile	MSPN	MEMBER PRICE	FET
<b>225/70R19.5</b>	G	18	15.2	32.4	9.2	6.75, 6.00	637	<b>24975</b>	<b>\$375.76</b>	<b>\$4.44</b>
<b>245/70R19.5</b>	H	19	15.7	33.6	9.7	6.75, 7.50	615	<b>23134</b>	<b>\$384.56</b>	<b>\$13.61</b>

(1) 3PMSF (3 Peak Mountain Snow Flake) is from European R117 regulation. It has no regulatory Truck Tire reference in N.A. The tire must score at least 25% better in deep snow traction than the Standard Reference Test Tire on an ECE certified ISO test procedure. 3PMSF always appears with "M+S" mark.

Note: Wheel listed first is the measuring wheel.

Exceeding the lawful speed limit is neither recommended nor endorsed.

MICHELIN® tires and tubes are subject to a continuous development program. Michelin North America, Inc. reserves the right to change product specifications at any time without notice or obligations.



**XDS 2™ (Standard Sizes)**

REGIONAL

**Second generation of Michelin's best drive axle radial for deep snow and mud traction.**

- Rugged directional tread design helps boost snow and ice traction and helps reduce heel/toe wear typically associated with open shoulder designs.
- Michelin Durable Technology's Matrix™ 3-Dimensional siping for enhanced stability and exceptional traction in both dry and slippery conditions.
- Extra robust four-belt crown package with extra wide working plies help deliver exceptional casing life.
- Full-width elastic protector ply and extra thick rubber under the tread help protect the working plies from shocks, bruises and impacts.
- SipeSaver teardrop at the base of the sipes relieves stresses and helps prevent tearing.

← Directional tread



SIZE	Load Range	Original Tread Depth 32nds	Loaded Radius in.	Overall Diameter in.	Overall Width in.	Approved Wheels (Measuring wheel listed first.)	Revs Per Mile	MSPN	MEMBER PRICE	FET
<b>11R22.5</b> <sup>(1,2)</sup>	H	26	19.6	41.9	11.4	8.25, 7.50	494	<b>05359</b>	<b>\$624.78</b>	<b>\$29.39</b>
<b>11R24.5</b> <sup>(1,2)</sup>	H	26	20.5	43.9	11.0	8.25, 7.50	472	<b>06613</b>	<b>\$651.48</b>	<b>\$34.59</b>

(1) Only MICHELIN® XDS®2 standard sizes carry the MICHELIN® Durable Technology logo.  
 (2) Directional tread design.

**X WORKS™ XDY®**

ON/OFF ROAD



**Next generation on/off road drive tire optimized for exceptional traction and wear in mixed and severe on/off road service**

- Improved durability<sup>(1)</sup> due to a more robust center region of the tread
- 10% improved removal mileage<sup>(1)</sup> due to the wider tread width
- More efficient mud evacuation<sup>(1)</sup> due to directional tread
- Excellent protection from shocks, snags and impacts due to extra-thick sidewall

← Directional tread



SIZE	Load Range	Original Tread Depth 32nds	Loaded Radius in.	Overall Diameter in.	Overall Width in.	Approved Wheels (Measuring wheel listed first.)	Revs Per Mile	MSPN	MEMBER PRICE	FET
<b>11R22.5</b> <sup>(2)</sup>	H	30	19.7	41.9	11.3	8.25, 7.50	493	<b>89725</b>	<b>\$560.70</b>	<b>\$29.39</b>
<b>315/80R22.5</b> <sup>(2)</sup>	L	28	20.0	43.0	12.5	9.00	486	<b>55576</b>	<b>\$760.95</b>	<b>\$52.83</b>
<b>11R24.5</b> <sup>(2)</sup>	H	30	20.7	44.0	11.3	8.25, 7.50	466	<b>90022</b>	<b>\$582.95</b>	<b>\$34.59</b>

(1) When compared to the MICHELIN® XDY®3 tire.  
 (2) Directional tread design.

Note: Wheel listed first is the measuring wheel.  
 Exceeding the lawful speed limit is neither recommended nor endorsed.  
 MICHELIN® tires and tubes are subject to a continuous development program. Michelin North America, Inc. reserves the right to change product specifications at any time without notice or obligations.

**XDY-EX2™****ON/OFF ROAD**

**Our most aggressive drive axle tire designed for commercial vehicles operating in extreme conditions where maximum traction is the priority**

- Improved off-road and mud traction due to a more aggressive tread redesign with more void area<sup>(1)</sup>
- Excellent protection from shocks, snags and impacts due to extra-thick sidewall
- Maximum mileage and casing life due to Co-Ex technology



SIZE	Load Range	Original Tread Depth 32nds	Loaded Radius in.	Overall Diameter in.	Overall Width in.	Approved Wheels (Measuring wheel listed first.)	Revs Per Mile	MSPN	MEMBER PRICE	FET
<b>11R24.5</b>	H	32	20.7	44.3	11.3	8.25, 7.50	467	<b>23274</b>	<b>\$639.10</b>	<b>\$34.59</b>

(1) When compared to the MICHELIN® XDY-EX™ tire.

Note: Wheel listed first is the measuring wheel.

Exceeding the lawful speed limit is neither recommended nor endorsed.

MICHELIN® tires and tubes are subject to a continuous development program. Michelin North America, Inc. reserves the right to change product specifications at any time without notice or obligations.



**X<sup>®</sup> LINE<sup>™</sup> ENERGY T**

LINE HAUL

**SmartWay<sup>®</sup> fuel efficiency<sup>(1)</sup> with excellent mileage and casing durability in a trailer tire designed specifically for line haul conditions**

- 10% improved rolling resistance over MICHELIN<sup>®</sup> XT-1<sup>®</sup> tires from use of Advanced Technology<sup>™</sup> Tread Compound
- Excellent tread life from a solid sculpture that resists wear and a shoulder groove that resists irregular wear
- Exceptional handling has been optimized with the use of 4 circumferential grooves, delivering excellent water evacuation
- Extended casing life due to a curb guard for sidewall and shoulder protection, and a rectangular bead bundle that reduces casing heat and fatigue



**7 Year**

7 YEAR 700,000-MILE  
3-RETREAD LIMITED WARRANTY <sup>(2)</sup>

SmartWay<sup>®</sup>  
Verified

SIZE	Load Range	Original Tread Depth 32nds	Loaded Radius in.	Overall Diameter in.	Overall Width in.	Approved Wheels (Measuring wheel listed first.)	RPM	MSPN	MEMBER PRICE	FET
<b>11R22.5</b>	G	12	19.1	40.9	11.2	8.25, 7.50	493	<b>92005</b>	<b>\$438.77</b>	<b>\$25.23</b>
<b>275/80R22.5</b>	G	12	18.4	39.7	11.1	8.25, 7.50	523	<b>92052</b>	<b>\$429.87</b>	<b>\$25.23</b>
<b>11R24.5</b>	H	12	20.0	43.0	11.1	8.25, 7.50	482	<b>92448</b>	<b>\$471.70</b>	<b>\$34.59</b>
<b>275/80R24.5</b>	G	12	19.1	40.8	10.8	8.25, 7.50	507	<b>92981</b>	<b>\$462.80</b>	<b>\$25.23</b>

(1) Based on industry standard rolling resistance testing of comparable tires or retreads. Actual results may vary, and may be impacted by many factors, to include road conditions, weather and environment, driver performance, etc.  
 (2) 7/7/3 Manufacturer's Limited Casing Warranty: 7 Year or 700,000 Mile or 3-Retread Limited Warranty for MICHELIN<sup>®</sup> X<sup>®</sup> LINE<sup>™</sup> ENERGY T tire when retreaded by an authorized Michelin Retread Technologies (MRT) Dealer only. See limited warranty for details.

**X<sup>®</sup> LINE<sup>™</sup> ENERGY T (19.5" Wheel)**

LINE HAUL



**Fuel-efficient<sup>(1)</sup>, long wearing, small diameter trailer tire designed for high cube highway service**

- 14% reduction in rolling resistance from specially engineered rubber compound<sup>(2)</sup>
- Up to 14% improvement in tread life, delivered through a combination of a wider tread for better force distribution, massive shoulders to resist scuffing, and micro sipes to help prevent abnormal wear<sup>(3)</sup>
- Driving confidence is delivered through excellent traction provide by see-through circumferential grooves and hydro sipes for improved wet traction
- Casing life is extended through use of a rectangular bead bundle and extended metallic chafer that protects against mounting damage and brake heat



SIZE	Load Range	Original Tread Depth 32nds	Loaded Radius in.	Overall Diameter in.	Overall Width in.	Approved Wheels (Measuring wheel listed first.)	RPM	MSPN	MEMBER PRICE	FET
<b>265/70R19.5</b>	J	13	15.7	33.9	10.4	7.50, 6.75, 8.25	608	<b>40936</b>	<b>\$457.46</b>	<b>\$23.63</b>

(1) Based on industry standard rolling resistance testing of comparable tires or retreads. Actual results may vary, and may be impacted by many factors, to include road conditions, weather and environment, driver performance, etc.  
 (2) Based on ISO R 1222 testing vs. 265/70R19.5 MICHELIN<sup>®</sup> XTA<sup>®</sup>2 ENERGY tire.  
 (3) Based on Lorca test vs. 265/70R19.5 MICHELIN<sup>®</sup> XTA<sup>®</sup>2 ENERGY tire.

Note: Wheel listed first is the measuring wheel.

Exceeding the lawful speed limit is neither recommended nor endorsed.

MICHELIN<sup>®</sup> tires and tubes are subject to a continuous development program. Michelin North America, Inc. reserves the right to change product specifications at any time without notice or obligations.



**X ONE® LINE™ ENERGY T**

LINE HAUL



**Breakthrough Advanced Casing Technology delivers significant reduction in irregular wear<sup>(1)</sup> and improved fuel economy<sup>(2)</sup> to Michelin's latest wide base single tire for line haul trailers**

- New, Advanced Casing Technology delivers 15% improvement<sup>(1)</sup> in removal mileage using a unique design that fights irregular wear
- SmartWay® fuel efficiency<sup>(2)</sup> comes from use of Advanced Technology™ Compounds to deliver low rolling resistance
- Casing life is extended using Michelin's rectangular bead bundle for reduced casing heat, and full width protector ply to help prevent punctures



SIZE	Load Range	Original Tread Depth 32nds	Loaded Radius in.	Overall Diameter in.	Overall Width in.	Approved Wheel	Revs Per Mile	MSPN	MEMBER PRICE	FET
445/50R22.5 <sup>(2)</sup>	L	13	18.3	39.5	17.1	14.00	525	84085	\$858.85	\$31.66

(1) Based on current pull point vs MICHELIN® X ONE® XTA® tire in field testing and observation.

(2) Based on industry standard rolling resistance testing of comparable tires or retreads. Actual results may vary, and may be impacted by many factors, to include road conditions, weather and environment, driver performance, etc.

**XTA®2 ENERGY**

LINE HAUL



**Fuel-efficient<sup>(1)</sup>, small diameter trailer tire that helps deliver long, even tread wear in high cube highway service**

- Advanced Technology™ compounds formulated to help provide low rolling resistance and cool operating temperatures
- See-through circumferential grooves promote efficient water evacuation for good wet braking and traction throughout the life
- Improved retreadability from a stronger, more curable crown package (compared to the MICHELIN® ENERGY XTA® tire)
- The 445/45R19.5 is an ultra low-profile, wide base tire optimized to replace duals



SIZE	Load Range	Original Tread Depth 32nds	Loaded Radius in.	Overall Diameter in.	Overall Width in.	Approved Wheels (Measuring wheel listed first.)	Revs Per Mile	MSPN	MEMBER PRICE	FET
245/70R17.5 <sup>(1)</sup>	J	13	14.2	31.2	9.5	6.75, 7.50	670	78370	\$411.84	\$23.63

(1) Based on industry standard rolling resistance testing of comparable tires or retreads. Actual results may vary, and may be impacted by many factors, to include road conditions, weather and environment, driver performance, etc.

Note: Wheel listed first is the measuring wheel.

Exceeding the lawful speed limit is neither recommended nor endorsed.

MICHELIN® tires and tubes are subject to a continuous development program. Michelin North America, Inc. reserves the right to change product specifications at any time without notice or obligations.



**X ONE® MULTI™ ENERGY T**

REGIONAL & LINE HAUL

**Breakthrough Advanced Casing Technology enables a significant reduction in irregular wear to Michelin's latest wide base single tire for highway and regional operations.**

- Engineered to replace duals on regional and line haul trailer axle fitments
- Leading SmartWay® fuel economy<sup>(1)</sup> comes from use of Advanced Technology™ Compounds that deliver low rolling resistance
- Features Infini-Coil Technology™, incorporating 1/4 mile of steel cable to help eliminate casing growth and ensure a consistent footprint
- Directional sipes and solid shoulders help reduce irregular wear<sup>(2)</sup>



SIZE	Load Range	Original Tread Depth 32nds	Loaded Radius in.	Overall Diameter in.	Overall Width in.	Approved Wheel	Revs Per Mile	MSPN	MEMBER PRICE	FET
<b>445/50R22.5</b> <sup>(3)</sup>	L	16	18.4	39.7	17.1	14.00	523	<b>33836</b>	<b>\$823.25</b>	<b>\$31.66</b>
<b>455/55R22.5</b> <sup>(4)</sup>	L	16	19.3	41.6	17.7	14.00	499	<b>47798</b>	<b>\$836.60</b>	<b>\$35.44</b>

(1) Based on industry standard rolling resistance testing of comparable tires or retreads. Actual results may vary, and may be impacted by many factors, to include road conditions, weather and environment, driver performance, etc.  
 (2) Based on current pull points vs MICHELIN® X ONE® XTE® tire in field testing and observations.  
 (3) Equivalent overall diameter to Michelin 275/80R22.5 trailer tire offering.  
 (4) Equivalent overall diameter to Michelin 11R22.5 or 275/80R24.5 trailer tire offering.



**XTE2®**

REGIONAL & LINE HAUL

**Robust small diameter trailer tire designed to withstand the demands of high scrub and spread axle service on low platform and specialty trailers**

- Dual compound rubber helps ensure cool operating temperatures while upper tread abrasion resistance helps keep wear rates low
- Deep, wide channels help provide excellent water evacuation throughout the life of the tire
- Lateral siping along rib edges help enhance traction and braking in adverse weather conditions
- Robust crown design with five steel belt package



SIZE	Load Range	Original Tread Depth 32nds	Loaded Radius in.	Overall Diameter in.	Overall Width in.	Approved Wheels (Measuring wheel listed first.)	Revs Per Mile	MSPN	MEMBER PRICE	FET
<b>245/70R19.5</b>	J	16	15.4	33.4	9.7	6.75, 7.50	621	<b>67113</b>	<b>\$389.50</b>	<b>\$20.51</b>
<b>285/70R19.5</b>	J	18	16.1	35.2	11.2	8.25	589	<b>51278</b>	<b>\$524.80</b>	<b>\$36.76</b>

Note: Wheel listed first is the measuring wheel.  
 Exceeding the lawful speed limit is neither recommended nor endorsed.  
 MICHELIN® tires and tubes are subject to a continuous development program. Michelin North America, Inc. reserves the right to change product specifications at any time without notice or obligations.

**XTE2®+**

REGIONAL & LINE HAUL



**Robust small diameter trailer tire designed to withstand the demands of high scrub on low platform and specialty trailers in regional and line haul applications.**

- Long Tread Life – Dual compound tread rubber helps ensure cool operating temperatures, while chip and cut resistant rubber compound helps resist the abrasion/aggression from lateral scrub and rough surfaces.
- Excellent Traction – Lateral siping along rib edges help enhance traction and braking in adverse weather conditions.
- Improved Wet Traction – Deep, wide channels help provide excellent water evacuation throughout the life of the tire.
- Casing Durability – Robust crown design with 4-steel belt package.



SIZE	Load Range	Original Tread Depth 32nds	Loaded Radius in.	Overall Diameter in.	Overall Width in.	Approved Wheels (Measuring wheel listed first.)	Revs Per Mile	MSPN	MEMBER PRICE	FET
215/75R17.5	H	15	14.1	30.7	9.3	6.00, 6.75	679	68593	\$401.72	\$12.29

**X® MULTI™ T (17.5" Wheel)**

REGIONAL



**Robust small diameter tire designed to withstand the demands of high scrub and spread axle service on low platform and specialty trailers in various regional applications. Replacing the MICHELIN® XTE®2 235/75R17.5 size.**

- Enhanced Mileage – Dual compound tread rubber helps ensure cool operating temperatures, while abrasion-resistant rubber compound helps keep tire wear rate low.
- Durable Casing – Robust crown design with 4-steel belt package.
- Excellent Wet Traction – Deep, wide channels help provide excellent water evacuation throughout the life of the tire.



SIZE	Load Range	Original Tread Depth 32nds	Loaded Radius in.	Overall Diameter in.	Overall Width in.	Approved Wheels (Measuring wheel listed first.)	Revs Per Mile	MSPN	MEMBER PRICE	FET
245/70R17.5	H	15	14.0	31.0	10.0	6.75, 7.50	662	18537	\$406.70	\$23.63

Note: Wheel listed first is the measuring wheel.

Exceeding the lawful speed limit is neither recommended nor endorsed.

MICHELIN® tires and tubes are subject to a continuous development program. Michelin North America, Inc. reserves the right to change product specifications at any time without notice or obligations.

**X<sup>®</sup> MULTI<sup>™</sup> T2**

REGIONAL



**Improved mileage and exceptional durability, this regional and urban trailer tire is primarily used on steerable lift axles on heavy box and flat-bed trailers.**

- Up to 20% More Mileage<sup>(1)</sup> – Innovative evolving groove design which promotes uniform wear and resists stone retention.
- Increased Traction and Stability<sup>(2)</sup> – Beefy solid shoulders and increased rubber volume help resist the abrasion of lateral scrub.
- Longer Life and Retreadability – Robust crown design with 4-steel belt package.



SIZE	Load Range	Original Tread Depth 32nds	Loaded Radius in.	Overall Diameter in.	Overall Width in.	Approved Wheels (Measuring wheel listed first.)	Revs Per Mile	MSPN	MEMBER PRICE	FET
<b>385/55R22.5</b>	L	19	18.1	39.4	15.0	11.75, 12.25	523	<b>28644</b>	<b>\$878.14</b>	<b>\$30.33</b>

(1) +20% mileage vs MICHELIN<sup>®</sup> X<sup>®</sup> MUTLI<sup>™</sup> T tire.  
 (2) 8% larger total contact area than the MICHELIN<sup>®</sup> X<sup>®</sup> MUTLI<sup>™</sup> T tire.

**XTA<sup>®</sup>**

REGIONAL



**The highway trailer radial optimized for low bed, high cube trailers operations**

- Application specific compound
- Significant groove angles to help resist stone retention drilling



SIZE	Load Range	Original Tread Depth 32nds	Loaded Radius in.	Overall Diameter in.	Overall Width in.	Approved Wheels (Measuring wheel listed first.)	Revs Per Mile	MSPN	MEMBER PRICE	FET
<b>215/75R17.5</b>	J	15	14.1	30.7	8.7	6.00, 6.75	679	<b>82636</b>	<b>\$393.38</b>	<b>\$12.29</b>

Note: Wheel listed first is the measuring wheel.  
 Exceeding the lawful speed limit is neither recommended nor endorsed.  
 MICHELIN<sup>®</sup> tires and tubes are subject to a continuous development program. Michelin North America, Inc. reserves the right to change product specifications at any time without notice or obligations.





**XTE®**

**REGIONAL**

**The robust trailer tire designed to withstand the demands of high scrub and spread axle service for regional applications**

- Long tread life from 16/32nds of application specific compounds
- Smooth, even wear in high scrub service from beefy, solid shoulders and trailer optimized design
- Protection from impacts and curbing promoted by sidewall scallops and curb guard features
- Standardized casing dimensions help ensure interchangeability with MICHELIN® line haul steer and drive casings for efficient casing management



SIZE	Load Range	Original Tread Depth 32nds	Loaded Radius in.	Overall Diameter in.	Overall Width in.	Approved Wheels (Measuring wheel listed first.)	Revs Per Mile	MSPN	MEMBER PRICE	FET
<b>11R22.5</b>	G	16	19.1	41.0	11.3	8.25, 7.50	506	<b>21307</b>	<b>\$456.75</b>	<b>\$25.23</b>
<b>275/80R22.5</b>	G	16	18.6	39.8	11.0	8.25, 7.50	520	<b>17706</b>	<b>\$448.05</b>	<b>\$25.23</b>
<b>11R24.5</b>	G	16	20.0	43.0	11.3	8.25, 7.50	482	<b>07025</b>	<b>\$478.50</b>	<b>\$29.39</b>



**XTY®2**

**ON/OFF ROAD**

**Low profile radial designed for rugged, mixed trailer service**

- Compound for chip and cut resistance to help resist the abusive conditions of on/off road applications
- Four steel belt construction helps deliver extra casing protection and added stability
- Extra wide protector ply extends under all major grooves and helps protect the working plies from most bruising and penetrations



SIZE	Load Range	Original Tread Depth 32nds	Loaded Radius in.	Overall Diameter in.	Overall Width in.	Approved Wheels (Measuring wheel listed first.)	Revs Per Mile	MSPN	MEMBER PRICE	FET
<b>275/70R22.5</b>	J	21	17.7	38.2	10.9	7.50, 8.25	544	<b>01658</b>	<b>\$507.45</b>	<b>\$32.51</b>

Note: Wheel listed first is the measuring wheel.  
 Exceeding the lawful speed limit is neither recommended nor endorsed.  
 MICHELIN® tires and tubes are subject to a continuous development program. Michelin North America, Inc. reserves the right to change product specifications at any time without notice or obligations.



**XPS® RIB**

COMMERCIAL TIRE

**MICHELIN® XPS® RIB tires offer long wear life with steel casing strength and retreadability**

- Tread compounds specifically developed for commercial applications help tires last longer so your business dollars go farther
- Steel casing adds strength and allows retreading to greatly extend the life of the tire and keep it on the job
- 60,000-Mile Limited Warranty<sup>(2)</sup>



SIZE	Load Range	Original Tread Depth 32nds	Load / Speed Rating	Overall Diameter in.	Overall Width <sup>(1)</sup> in.	Wheel Width Range <sup>(1)</sup> (Measuring wheel listed first.)	Revs Per Mile (at 45 mph)	MSPN	MEMBER PRICE
LT215/85R16	E	15	115Q	30.7	8.6	6.0, (5.5 - 7.0)	681	39510	\$223.39
LT225/75R16	E	14	115Q	29.4	8.7	6.0, (6.0 - 7.0)	706	08404	\$246.53
LT235/85R16	E	15	120Q	32.0	9.7	7.0, (6.0 - 7.0)	655	13080	\$249.20
LT245/75R16	E	15	120Q	30.6	9.6	7.0, (6.5 - 8.0)	676	26848	\$255.43

(1) See Warranty, Notes and Warning below.  
 (2) See Michelin Owner's Manual for details.

**XPS® TRACTION**

COMMERCIAL TIRE



**MICHELIN® XPS® TRACTION tires offer extreme off-road traction with steel casing puncture resistance and retreadability**

- An aggressive tread design and anti-chip compound help provide the off-road traction needed on gravel and rocky terrain
- Steel casing adds strength and allows retreading to greatly extend the life of the tire and keep it on the job
- 50,000-Mile Limited Warranty<sup>(2)</sup>



SIZE	Load Range	Original Tread Depth 32nds	Load / Speed Rating	Overall Diameter in.	Overall Width <sup>(1)</sup> in.	Wheel Width Range <sup>(1)</sup> (Measuring wheel listed first.)	Revs Per Mile (at 45 mph)	MSPN	MEMBER PRICE
LT215/85R16	E	17	115Q	30.7	8.8	6.0, (5.5 - 7.0)	681	35260	\$258.99

(1) See Warranty, Notes and Warning on below.  
 (2) See Michelin Owner's Manual for details.

**Light Truck Tire Warranty Standard Limited Warranty What's Covered**

All Michelin® Light Truck Tires have a Standard Manufacturer's Limited Warranty, which covers defects in workmanship and materials for the life of the original usable tread, or for 6 years from date of purchase, whichever occurs first. See Tire Dealer for details.

The owner's manual/limited warranty booklet also includes an additional limited warranty for tread life or mileage.

**NOTES AND WARNING**

- Note: All comparisons are between Michelin tires within this category.
- (1) Sizes listed do not include P-metric and floatation dimensions. For full range of products refer to "Michelin® Data Book" No. MDL41080.
  - (2) Exceeding the lawful speed limit is neither recommended nor endorsed.
  - (3) Tire section widths and overall widths will change 0.1 inch (2.5 mm) for each 1/4 inch change in wheel width. Minimum dual spacing should be adjusted accordingly.
  - (4) Range of approved wheel widths. For specific wheel profiles and measuring wheel, refer to "Michelin® Data Book" No. MDL41080.

**WARNING:** Serious or fatal injury may result from tire failure due to underinflation/overinflation/overloading. To ensure correct pressure and vehicle load, refer to vehicle owner's manual or tire information placard in the vehicle. Serious injury or death may result from explosion of tire/wheel assembly due to improper mounting. Only tire professionals should mount tires, and they should never inflate beyond 40 psi to seat the beads. See Tire Dealer for proper mounting. Before mixing types of tires in any configuration on any vehicle, be sure to check the vehicle owner's manual for recommendations.

Michelin® tires and tubes are subject to a continuous development program. Michelin North America, Inc. reserves the right to change product specifications at any time without notice or obligation.



**DANGER: Never mount a 16" diameter tire on a 16.5" wheel.**

Note: Wheel listed first is the measuring wheel.

Exceeding the lawful speed limit is neither recommended nor endorsed.

MICHELIN® tires and tubes are subject to a continuous development program. Michelin North America, Inc. reserves the right to change product specifications at any time without notice or obligations.

To learn more please contact your MICHELIN Sales Representative or visit [www.michelintruck.com](http://www.michelintruck.com)

**MICHELIN NORTH AMERICA, INC.  
CUSTOMER SERVICE DEPARTMENT**

Post Office Box 19001  
Greenville, SC 29602-9001  
Phone: (888) 622-2306

MICHELIN NORTH AMERICA, INC., Greenville, South Carolina, USA

An Equal Opportunity Employer  
Copyright © 2017 Michelin North America, Inc. All rights reserved.  
The Michelin Man is a registered trademark owned by Michelin North America, Inc.

March 1, 2017 Updated Nov. 17, 2017