

Regional Steer Tire

UNIROYAL® RS2

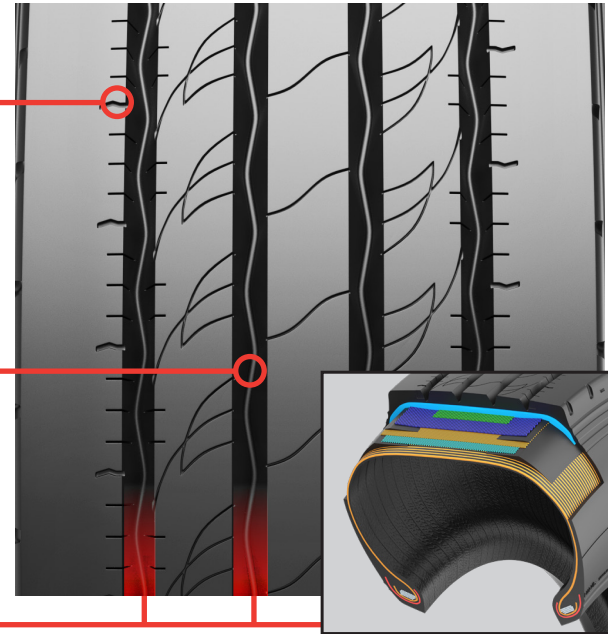
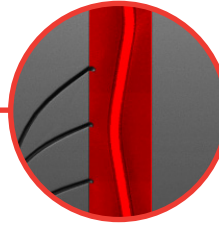
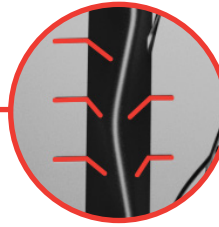


A SmartWay® regional and last mile delivery steer tire offering from an affordable brand you know and trust, with a history of keeping America rolling for more than 125 years.

4 Year (2)
4 YEAR / 2-RETREADS MANUFACTURER'S LIMITED CASING GUARANTEE

Designed to:

- Perform in high scrub environments with advanced compounds
- Reduce irregular wear with the use of micro siping in the major grooves
- Reduce stone retention with a zig-zag channel groove and an angled groove wall
- Enhance wet traction with four large groove channels for water evacuation
- Improve casing durability with a four-belt package (excludes 225/70R19.5)



Size	Load Range	Catalog Number	Tread Depth		Max. Speed (*)		Loaded Radius		Overall Diameter		Overall Width (‡)		Approved Wheels (Measuring wheel listed first.)		Min. Dual Spacing (‡)		Revs Per Mile	Max. Load and Pressure Single				Max. Load and Pressure Dual			
			32nds	mph	kph	in.	mm	in.	mm	in.	mm	in.	mm	in.	mm	lbs.		psi	kg.	kPa	lbs.	psi	kg.	kPa	
215/75R17.5	H	54344	16	75	120	13.9	354	30.4	773	8.6	218	6.00, 6.75	9.3	237	685	4805	125	2180	850	4540	125	2060	850		
225/70R19.5	G	07627	16	81	130	14.9	378	32.0	812	9.0	229	6.75, 6.00	10.0	254	649	3970	110	1800	760	3750	110	1700	760		
245/70R19.5	H	40450	17	81	130	15.3	389	33.0	839	9.8	248	7.50, 6.75	11.0	279	628	4940	120	2240	825	4675	120	2120	825		
11R22.5	H	11723	19	75	120	19.2	488	41.3	1048	10.7	273	8.25, 7.50	12.5	318	503	6610	120	3000	830	6005	120	2725	830		
11R24.5	H	91876	19	75	120	20.4	519	43.2	1099	10.7	273	8.25, 7.50	12.5	318	477	7160	120	3250	830	6610	120	3000	830		
255/70R22.5	H	02838	18	81	130	17.0	431	36.5	927	10.4	264	7.50, 8.25	11.3	287	569	5510	120	2500	830	5070	120	2300	830		
295/75R22.5	H	02291	19	75	120	18.6	473	39.9	1014	11.2	284	9.00, 8.25	13.2	335	519	6610	120	3000	830	6005	120	2725	830		
285/75R24.5	H	09179	19	75	120	19.6	497	41.3	1048	10.8	274	8.25, 7.50	12.5	318.0	499	6780	120	3075	830	6175	120	2800	830		

Note: Wheel listed first is the measuring wheel.

(*) Exceeding the lawful speed limit is neither recommended nor endorsed.

(‡) Overall width will change 0.1 inch (2.5 mm) for each 1/4 inch change in wheel width. Minimum dual spacing should be adjusted accordingly.

(1) Based on internal tests against SmartWay® requirements. For more information on SmartWay® verified technologies, go to US: www.epa.gov/smartway or CA: www.nrcan.gc.ca.

(2) Please see www.uniroyaltrucktires.com > Reference Documents > Warranties & Guarantees for details.



Visit www.uniroyaltrucktires.com or To Find Your Nearest Uniroyal Commercial Truck Tire Dealer Call: United States, 1-866-357-6847; Canada, 1-888-871-7777

UNIROYAL® commercial truck tires and tubes are subject to a continuous development program. MNA, Inc. reserves the right to change product specifications at any time without notice or obligations. Copyright © 2023 MNA, Inc. All rights reserved. (06/23)

