



**Oliver**<sup>®</sup>

Oliver has the Waste Industry covered.

*Reliable, Durable and Affordable*

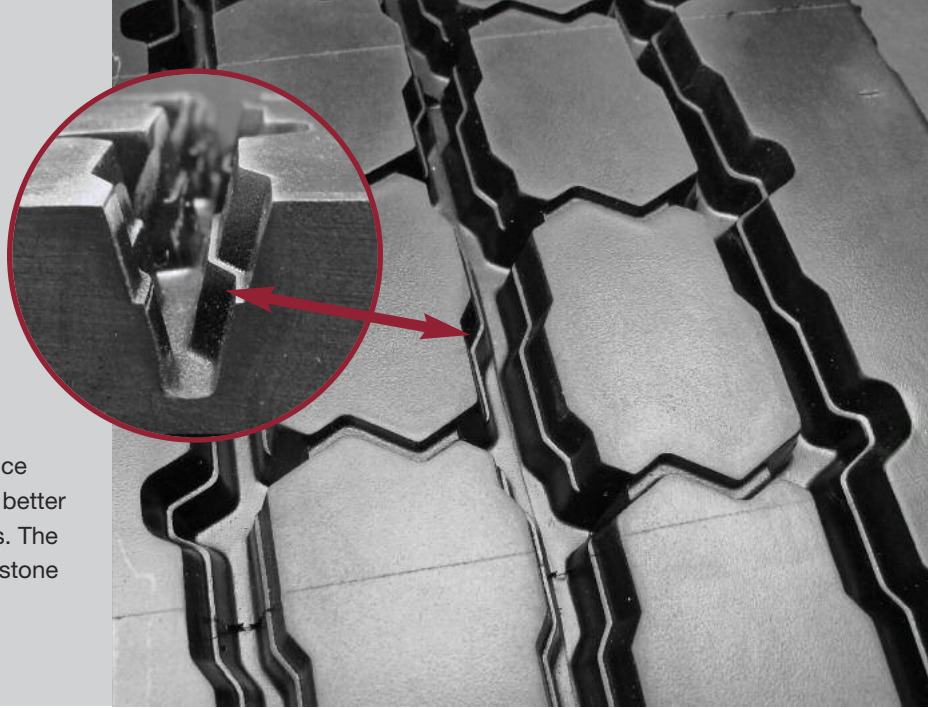


**Oliver**<sup>®</sup>  
Established in 1912.



Oliver exclusive feature that has two extremely useful benefits that every transportation and logistics company can utilize. **VDIplus**™ acts as a Visual Depth indicator, plus it is a stone ejector and reduces foreign material retention. This feature results in benefits no other retread product in the industry can deliver.

With easy visual tread depth gauging, you can enhance your fleet operations budget planning process, while better identifying and enforcing your pull point requirements. The reduced lodging of foreign material abates the usual stone drilling conditions and casing penetration issues that typically occur in the Waste Industry.

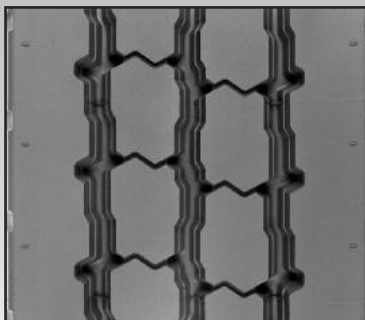


Oliver newest products designed for the Waste Industry. APWs and DPW are made with a compound which is designed to improve chip and cut resistant properties so often found in these tough applications. They each come with **VDIplus**™, an Oliver exclusive, that provides a visual tread depth indicator and stone ejector.

## APWs

### All Position Waste with Solid Shoulders

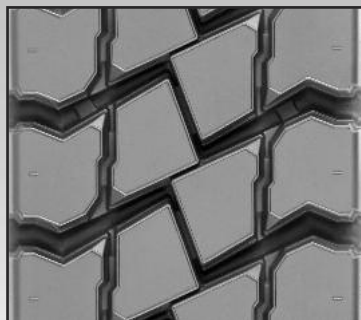
- Specifically designed for mixed service applications for the Steer and All-Position axles.
- Solid shoulder for improved durability in high scrub applications.
- Superior chip and cut protection in mixed service.
- Recommended for 30% or less off-road service.
- Utilizes Oliver's exclusive tread feature called **VDIplus**™. This tread feature acts as a **Visual Depth Indicator plus**, which resists stone retention and other road debris. It also helps enforce any pull point schedule.
- Self cleaning design with three circumferential grooves channel away water.



## DPW

### Drive Position Waste

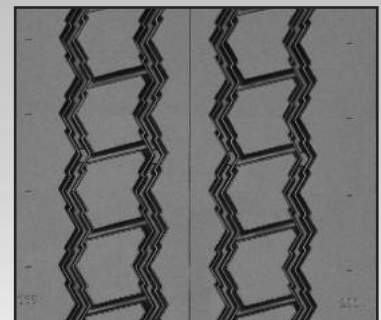
- For single or tandem axles in mixed and refuse service.
- Circumferential grooves for lateral traction.
- Utilizes Oliver's exclusive tread feature called **VDIplus**™. This tread feature acts as a **Visual Depth Indicator plus**, which resists stone retention and other road debris. It also helps enforce any pull point schedule.
- Recommended for 30% or less off-road use.



## WBR II

### Wide Base Design

- Particularly recommended for wide base rock and quarry, tanker and concrete mixer applications.
- The solid shoulder and three tapered ribs contribute to longer wear.
- Contoured shoulders to a resist lateral tearing.
- Utilizes Oliver's exclusive tread feature called **VDIplus**™. This tread feature acts as a **Visual Depth Indicator plus**, which resists stone retention and other road debris. It also helps enforce any pull point schedule.





# Yesterday, Today and Tomorrow

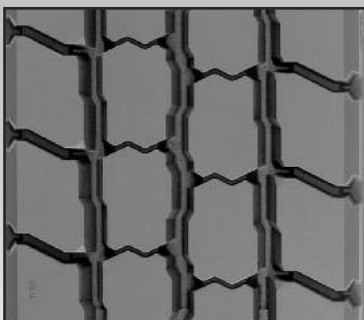
*We've had products for the garbage industry in the past and we will have products for the garbage industry in the future.*



Oliver's line-up also includes the traditional designs that have provided years of reliable service.

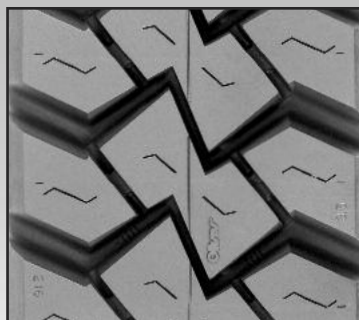
## **APW** All Position Waste

- Specially designed for waste applications for steer and drive positions.
- Chamfered shoulders resist tearing during turning in high-scrub areas.
- Large pseudo lug design promotes traction and a quiet ride in a high-scrub application.
- Deep see-through grooves aid water dispersion to improve wet traction.



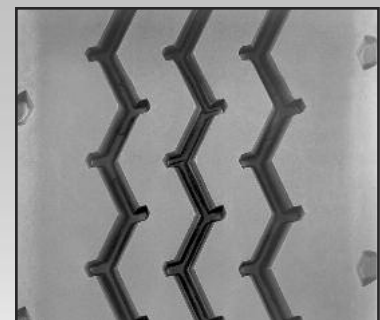
## **Waste Hauler Lug**

- Specially designed for waste applications requiring excellent traction.
- Tapered, interlocking elements promote self cleaning while resisting penetrating objects.
- Beveled shoulders resist tearing during turning in high-scrub areas.



## **Waste Hauler Rib**

- Particularly recommended for waste applications not requiring aggressive traction.
- Broad, rounded shoulders resist tearing and abrasion in high scrub operations.
- Four-rib design resists penetration while providing good lateral stability.



# OLIVER® RETREADS QUICK REFERENCE TREAD GUIDE

Product Availability (Tread Depth in Shaded Boxes)

Tread Size - mm	195	205	210	215	220	230	240	240	250	270	290	320	350
Tread Size - standard	7	8	8.5N	8.5	9	9.5	10.5	10.5D	12	14	15	16.5	18N
APW – All Position Waste					28	28	28		28				
APWs – All Position Waste with Solid Shoulder					26	26	26		26	26			
DPW – Drive Position Waste			26		26	26	30		32	32			
Waste Hauler Lug	26	26		26	26	26	26	32	32				
Waste Hauler Rib		24		24	24	24	24		24				
WBR II											20	20	20

Tread Design	Size		Base Width		Tread Width		Tread Depth		MSPN
	mm	std.	mm	in.	mm	in.	mm	in.	
APW – All Position Waste	220	9	220	8.66	195	7.66	22	28/32	04809
	230	9.5	230	9.06	205	8.06	22	28/32	35447
	240	10.5	240	9.50	212	8.36	22	28/32	82760
	250	12	250	9.84	221	8.70	22	28/32	05167
APWs – All Position Waste with Solid Shoulder	220	9	220	8.66	207	8.15	21	26/32	06305
	230	9.5	230	9.06	217	8.55	21	26/32	06489
	240	10.5	240	9.45	227	8.94	21	26/32	05205
	250	12	250	9.84	237	9.33	21	26/32	05263
	270	14	270	10.63	257	10.12	21	26/32	05859
DPW – Drive Position Waste	210	8.5N	210	8.27	195	7.67	21	26/32	09356
	220	9	220	8.66	204	8.04	21	26/32	09471
	230	9.5	230	9.06	213	8.40	21	26/32	09539
	240	10.5	240	9.45	223	8.78	24	30/32	04292
	250	12	250	9.84	232	9.14	25	32/32	04527
	270	14	270	10.63	251	9.87	25	32/32	04573
Waste Hauler Lug	195	7	194	7.63	184	7.24	21	26/32	77459
	205	8	205	8.07	179	7.06	21	26/32	43021
	215	8.5	216	8.50	203	8.00	21	26/32	37103
	220	9	220	8.66	197	7.76	21	26/32	00481
	230	9.5	229	9.00	216	8.50	21	26/32	00483
	240	10.5	241	9.50	229	9.02	21	26/32	37379
	240	10.5D	241	9.50	229	9.02	25	32/32	43801
	250	12	252	9.91	241	9.50	25	32/32	39475
Waste Hauler Rib	205	8	203	8.00	191	7.50	19	24/32	44022
	215	8.5	216	8.50	203	8.00	19	24/32	40724
	220	9	219	8.63	206	8.13	19	24/32	53331
	230	9.5	229	9.00	216	8.50	19	24/32	44276
	240	10.5	241	9.50	229	9.00	19	24/32	46130
	250	12	252	9.91	241	9.50	19	24/32	54154
WBR II	290	15	290	11.42	273	10.74	16	20/32	66657
	320	16.5	320	12.60	300	11.82	16	20/32	52153
	350	18N	350	13.78	328	12.90	16	20/32	68075

[www.oliverrubber.com](http://www.oliverrubber.com)

Oliver Rubber Company, One Parkway South, Greenville, SC 29602-9001, 1-866-464-2580

Prices subject to change without notice.

Copyright © 2013 Oliver Rubber Company All rights reserved. An Equal Opportunity Employer.  
OLV43901 (07/13)

