



# **QUICK REFERENCE TREAD GUIDE**



US : [business.michelinman.com](https://business.michelinman.com)  
CA : [michelintruck.com/en\\_CA](https://michelintruck.com/en_CA)



# TABLE OF CONTENTS

<b>ALL POSITION RETREADS</b> . . . . .	<b>3</b>
XZA® Pre-Mold Retread . . . . .	3
XZE® Pre-Mold Retread . . . . .	3
XZE®2 Pre-Mold Retread . . . . .	3
XZA® Wide Base Pre-Mold Retread . . . . .	4
XZU®2 Pre-Mold Retread . . . . .	4
X ONE® XZU®S Pre-Mold Retread . . . . .	4
X ONE® XZU®S+ Pre-Mold Retread . . . . .	5
XZU®S Pre-Mold Retread . . . . .	5
XZH Wide Base Pre-Mold Retread . . . . .	5
XZL Wide Base Pre-Mold Retread . . . . .	6
XZY® Pre-Mold Retread . . . . .	6
XZY® Wide Base Pre-Mold Retread . . . . .	6
XZY®3 Pre-Mold Retread . . . . .	7
XZY®3 Wide Base Pre-Mold Retread . . . . .	7
<b>DRIVE POSITION RETREADS</b> . . . . .	<b>8</b>
X® LINE ENERGY D Pre-Mold Retread . . . . .	8
X ONE® LINE ENERGY D Pre-Mold Retread . . . . .	8
XD4® Pre-Mold Retread . . . . .	8
XDA2® 19 AT and 23 AT Pre-Mold Retread . . . . .	9
X ONE® LINE GRIP D Pre-Mold Retread . . . . .	9
X ONE® XDA-HT Pre-Mold Retread . . . . .	9
XDC® 22 Pre-Mold Retread . . . . .	10
XDHT® Pre-Mold Retread . . . . .	10
XDN®2 Pre-Mold Retread . . . . .	10
XM+S4® Pre-Mold Retread . . . . .	11
X® MULTI ENERGY D Pre-Mold Retread . . . . .	11
CD-LL Pre-Mold Retread . . . . .	11
MD XDN®2 Pre-Mold Retread . . . . .	12
XDE® M/S Pre-Mold Retread . . . . .	12
XDS®2+ Pre-Mold Retread . . . . .	12
X® MULTI D Pre-Mold Retread . . . . .	13
XDU®S Pre-Mold Retread . . . . .	13
XDY® Pre-Mold Retread . . . . .	13
XDY®-1 Pre-Mold Retread . . . . .	14
XDY-EX Pre-Mold Retread . . . . .	14
<b>TRAILER POSITION RETREADS</b> . . . . .	<b>15</b>
X ONE® LINE ENERGY T2 Pre-Mold Retread . . . . .	15
X® LINE ENERGY T Pre-Mold Retread . . . . .	15
XTA® Pre-Mold Retread . . . . .	15
X® MULTI T SA Pre-Mold Retread . . . . .	16
XTA®-2 Pre-Mold Retread . . . . .	16
XTE2® Wide Base Pre-Mold Retread . . . . .	16
X ONE® MULTI ENERGY T Pre-Mold Retread . . . . .	17
XTY® SA Pre-Mold Retread . . . . .	17
IT2 Pre-Mold Retread . . . . .	17
<b>MICHELIN® RETREADS QUICK REFERENCE TREAD GUIDE</b> . . . . .	<b>18</b>
Standard Sizes . . . . .	18
Wide Base and MICHELIN® X One® Retread Sizes . . . . .	20
Custom Mold Tread Guide . . . . .	20

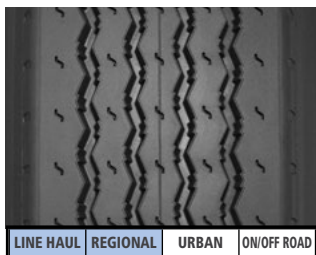
**MICHELIN® tires and tubes are subject to a continuous development program. Michelin North America, Inc. reserves the right to change product specifications at any time without notice or obligation.**

# ALL POSITION RETREADS

## XZA® Pre-Mold Retread

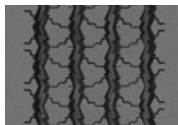
All-wheel position tread design with proven versatility and exceptional resistance to scrub and abrasion for line haul and regional applications.

- Solid shoulder to help withstand scrub and abrasion.
- Designed for long mileage and even wear
- Available siped and as a Custom Mold retread.



LINE HAUL REGIONAL URBAN ON/OFF ROAD

Tread Sizes	Metric	140	150	160	170	180	194\#7	203\#8	211\#8.5N	219\#9	225\#9.5
MSPN (MSPN Siped)		72464	95829	43903	48480	53906 (74087)	71005 (70659)	92719 (53937)	74565 (56193)	85773 (61685)	94169 (91816)
Tread	Metric	10.5 mm					12 mm				
Depth	Inches	13/32"					15/32"				



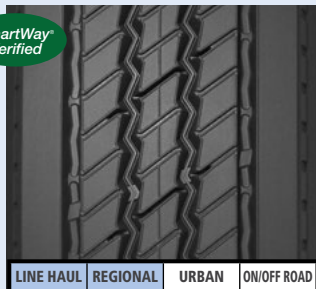
Available in the 240 mm - 20/32" width only.

Tread Sizes	Metric	240
MSPN		55653
Tread	Metric	16 mm
Depth	Inches	20/32"

## XZE® Pre-Mold Retread

All-position retread designed for regional and line haul applications requiring exceptional traction and tire wear resistance.

- SmartWay® fuel economy<sup>(1)</sup>
- Solid shoulders to help withstand scrub and abrasion.
- Deep siping for optimized traction.
- Available siped and as a Custom Mold retread.



LINE HAUL REGIONAL URBAN ON/OFF ROAD

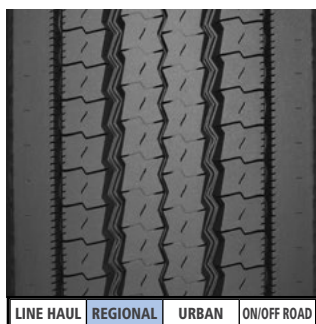
Tread Sizes	Metric	168\#5	177\#6	194\#7	203\#8	211\#8.5N	219\#9	225\#9.5	240	250
MSPN (MSPN Siped)		57118	62459	91791 (90947)	59028	86080 (78892)	51733 (50397)	55240 (70056)	05814 (07094)	06514 (07732)
Tread	Metric	13 mm	14 mm							
Depth	Inches	16/32"	18/32"							

(1) Based on industry standard rolling resistance testing of comparable tires and retreads. Actual results may vary, and may be impacted by many factors, to include road conditions, weather and environment, driver performance, etc.

## XZE®2 Pre-Mold Retread

All-position retread designed for regional applications requiring exceptional tire wear resistance.

- Compound optimized for regional and over-the-road operations.
- Center grooves for good water evacuation.
- Good traction.
- Performs well in both high scrub and low scrub conditions.



LINE HAUL REGIONAL URBAN ON/OFF ROAD

Tread Sizes	Metric	240	250	260
MSPN		17469	38469	34463
Tread	Metric	16 mm		
Depth	Inches	20/32"		

Exceeding the legal speed limit is neither recommended nor endorsed.

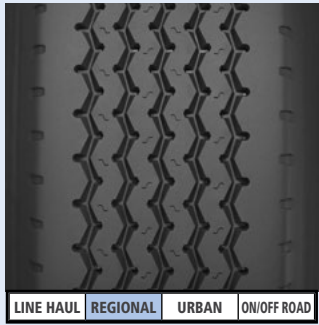
# ALL-POSITION RETREADS

## XZA® Wide Base Pre-Mold Retread

All-wheel position tread design with proven versatility and wide shoulder rib to withstand scrub and abrasion for regional applications.

- Wide shoulder rib to help withstand scrub and abrasion.
- Tapered tread extensions to help withstand shifting footprint stress typical of wide base service.

(1) Tread widths with two measurements have wings. The first number is tread base width in mm. The second number is the overall width, wing tip to tip.



LINE HAUL	REGIONAL	URBAN	ON/OFF ROAD
-----------	----------	-------	-------------

Tread Sizes	Metric	290/345 <sup>(1)</sup>	320/365 <sup>(1)</sup>
MSPN		07525	08650
Tread Depth	Metric	15 mm	
	Inches	19/32"	

## XZU®2 Pre-Mold Retread

All-position retread optimized for operations involving frequent stopping and starting e.g., transit buses<sup>(1)</sup>, delivery vehicles and sanitation trucks.

- Co-Ex Technology, unique two layer compound designed to minimize casing temperature for longer casing life.
- Solid shoulder design optimized for long, smooth wear.
- Fuel efficient compound to help contribute to greater fuel savings.<sup>(2)</sup>

(1) Federal Motor Carrier Safety Regulations, 9 C.F.R. § 395.75 (d), specify that "no bus shall be operated with regrooved, recapped or retreaded tires on the front wheels."

(2) Based on industry standard rolling resistance testing of comparable tires and retreads. Actual results may vary, and may be impacted by many factors, to include road conditions, weather and environment, driver performance, etc.



LINE HAUL	REGIONAL	URBAN	ON/OFF ROAD
-----------	----------	-------	-------------

Tread Sizes	Metric	240	250
MSPN		11107	11486
Tread Depth	Metric	20 mm	
	Inches	24/32"	

## X ONE® XZU®S Pre-Mold Retread

Multi-purpose, all-axle, next generation wide-based single, designed with traction and durability features for demanding urban applications.

- Long tread life and outstanding scrub resistance in Urban/Regional service with 23/32nds original tread depth of application-specific compound.
- Co-Ex Technology, unique two layer compound designed to minimize casing temperature for longer casing life.
- Enhanced protection against stone drilling from variable pitch groove walls and groove bottom protectors in all grooves.
- Tread design optimized for all weather traction.

(1) Tread widths with two measurements have wings. The first number is tread base width in mm. The second number is the overall width, wing tip to tip.



LINE HAUL	REGIONAL	URBAN	ON/OFF ROAD
-----------	----------	-------	-------------

Tread Sizes	Metric	385/435 <sup>(1)</sup>
MSPN		37269
Tread Depth	Metric	18 mm
	Inches	23/32"

## ALL-POSITION RETREADS

### X ONE® XZU®S+ Pre-Mold Retread

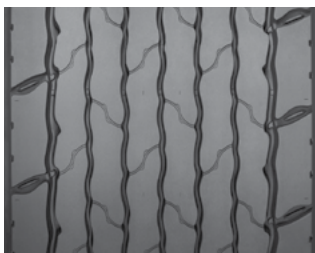
Industry leading, all-position, next generation wide-based single, designed with 50% greater wear life<sup>(1)</sup> and durability for demanding urban applications.<sup>(2)</sup>

- 50% greater wear life and outstanding scrub resistance in Urban/Regional service with 29/32nds original tread depth of application-specific compound.
- Co-Ex Technology, unique two layer compound designed to minimize casing temperature for longer casing life.
- Wing tread design for added protection on the shoulders for high scrub application.
- Rib tread design optimized for better on road feel and long wear.

(1) Vs. MICHELIN® X ONE® XZU®S Pre-Mold Retread.

(2) Used in intermittent highway service with maximum speed of 65 mph.

(3) Tread widths with two measurements have wings. The first number is tread base width in mm. The second number is the overall width, wing tip to tip.



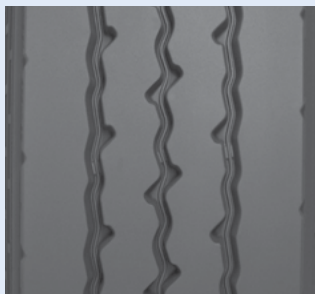
LINE HAUL	REGIONAL	URBAN	ON/OFF ROAD
-----------	----------	-------	-------------

Tread Sizes	Metric	385/435 <sup>(3)</sup>
MSPN		71480
Tread Depth	Metric	23 mm
	Inches	29/32"

### XZU®S Pre-Mold Retread

All-position retread helps provide longer, more even wear in demanding regional/urban operations.

- Long tread life is delivered through a combination of features that resist scrub, such as use of a proprietary compound, optimized rib design, and high rubber mass.



LINE HAUL	REGIONAL	URBAN	ON/OFF ROAD
-----------	----------	-------	-------------

Tread Sizes	Metric	220	230	240	250	270	280
MSPN		21300	15865	95666	17768	39959	68447
Tread Depth	Metric	21 mm					
	Inches	26/32"					

### XZH Wide Base Pre-Mold Retread

All-position retread designed for scrub resistance and high mileage in on/off road applications.

- Abrasion-resistant compound.
- Self-cleaning lugs, open shoulder design for exceptional traction and excellent flotation.
- Tapered tread extensions to help withstand shifting footprint stress typical of wide base service.

(1) Tread widths with two measurements have wings.

The first number is tread base width in mm. The second number is the overall width, wing tip to tip.



LINE HAUL	REGIONAL	URBAN	ON/OFF ROAD
-----------	----------	-------	-------------

Tread Sizes	Metric	350/395 <sup>(1)</sup>
MSPN		43429
Tread Depth	Metric	16 mm
	Inches	20/32"

## ALL-POSITION RETREADS

### XZL Wide Base Pre-Mold Retread

All-position tire designed to deliver long life for challenging on/off road applications.

- Co-Ex technology, unique two-layer compound designed to minimize internal casing temperature for longer tread and casing life.
- Wing tread design for added protection on the shoulders for high scrub applications.
- Self-cleaning, open-shoulder tread design features offset elements to help enhance traction.
- Stable block design helps ensure a consistent footprint, even in free-rolling positions, to help deliver smooth, even wear and a quiet ride.



LINE HAUL	REGIONAL	URBAN	ON/OFF ROAD
-----------	----------	-------	-------------

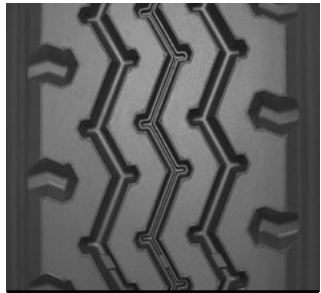
Tread Sizes	Metric	350/395 <sup>(1)</sup>
MSPN		75413
Tread Depth	Metric	24 mm
	Inches	30/32"

(1) Tread widths with two measurements have wings. The first number is tread base width in mm. The second number is the overall width, wing tip to tip.

### XZY<sup>®</sup> Pre-Mold Retread

All-position retread designed for regional and on/off road applications requiring exceptional tire wear resistance.

- Chip and cut resistant compound.
- Rib design optimized for quiet running and even wear.
- All wheel position capable.
- Shoulder scallops provide additional traction.



LINE HAUL	REGIONAL	URBAN	ON/OFF ROAD
-----------	----------	-------	-------------

Tread Sizes	Metric	203\#8	211\#8.5N	219\#9	225\#9.5	232\#10	238\#10.5	250
MSPN		54622	51695	61672	66458	92668	47479	64343
Tread Depth	Metric	14 mm						16 mm
	Inches	18/32"						20/32"

### XZY<sup>®</sup> Wide Base Pre-Mold Retread

All-position retread designed to deliver long tire life for challenging on/off road applications.

- Abrasion-resistant compound for long casing and tread life.
- Tapered tread extensions to withstand shifting footprint stress typical of wide base service.
- Also available as a Custom Mold retread.



LINE HAUL	REGIONAL	URBAN	ON/OFF ROAD
-----------	----------	-------	-------------

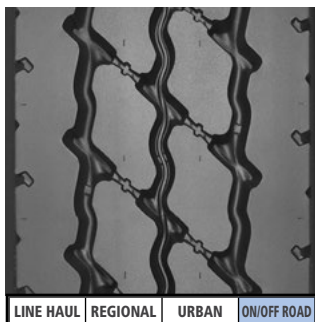
Tread Sizes	Metric	320/365 <sup>(1)</sup>
MSPN		30949
Tread Depth	Metric	16 mm
	Inches	20/32"

(1) Tread widths with two measurements have wings. The first number is tread base width in mm. The second number is the overall width, wing tip to tip.

## XZY®3 Pre-Mold Retread

All-wheel position tread designed for exceptional wear and all-position traction in mixed on/off road service. Abrasion resistance compound promotes long casing and tread life.

- Heavy Duty Tread Protection – Anti-Cut/Chip Compound protects against aggression, chipping, and scaling.
- Stone Protection – Center Groove Bottom Protector guards against stone drilling and assists in stone ejection.
- Long Tread Life – Deep tread depth delivers long life in on/off road service.
- Maximized Traction – Aggressive 4-Rib Design provides traction in soft soil and mud.



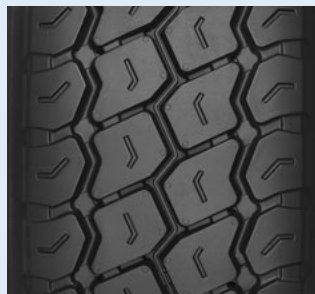
LINE HAUL REGIONAL URBAN ON/OFF ROAD

Tread Sizes	Metric	210	220	230	240	250	270
MSPN		40131	41044	41385	43241	48547	48974
Tread Depth	Metric	19 mm					
	Inches	24/32"					

## XZY®3 Wide Base Pre-Mold Retread

All-wheel position tread designed for exceptional wear and all-position traction in mixed on/off road service. Abrasion resistance compound promotes long casing and tread life.

- Heavy Duty Tread Protection – Anti-Cut/Chip Compound protects against aggression, chipping, and scaling.
- Stone Protection – Center Groove Bottom Protector guards against stone drilling and assists in stone ejection.
- Long Tread Life – Deep tread depth delivers long life in on/off road service.
- Maximized Traction – Aggressive 4-Rib Design provides traction in soft soil and mud.



LINE HAUL REGIONAL URBAN ON/OFF ROAD

Tread Sizes	Metric	290/345 <sup>(1)</sup>
MSPN		37350
Tread Depth	Metric	17 mm
	Inches	22/32"

(1) Tread widths with two measurements have wings. The first number is tread base width in mm. The second number is the overall width, wing tip to tip.



## DRIVE POSITION RETREADS

### X<sup>®</sup> LINE ENERGY D Pre-Mold Retread

SmartWay  
Verified

Drive position retread designed to offer exceptional SmartWay<sup>®</sup> fuel economy with leading tread life and traction in a line haul application.

- No compromise SmartWay<sup>®</sup> fuel economy and wear resistance from Dual Energy Compound Tread, combining wear resistant properties in the top tread layer, with cool running compounds in the bottom layer that promote low rolling resistance and long casing life.
- 25% longer tread life GUARANTEED<sup>(1)</sup> vs. competitive SmartWay line haul drive retreads, thanks to Dual Compound Tread Technology and Matrix Siping (see Guarantee for details).
- Driver confidence comes from the outstanding traction of Matrix Siping.
- MICHELIN ON MICHELIN<sup>(2)</sup>



LINE HAUL REGIONAL URBAN ON/OFF ROAD

Tread Sizes	Metric	220	230	240
MSPN		26837	27357	27540
Tread Depth	Metric	16.5 mm		
	Inches	21/32"		

(1) Based on internal tests against SmartWay requirements.

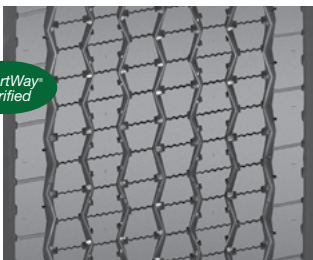
(2) A premium MICHELIN<sup>®</sup> retread with special guarantee(s) when retreaded on a MICHELIN<sup>®</sup> casings. See guarantee(s) at [business.michelinman.com](http://business.michelinman.com) for details.

### X ONE<sup>®</sup> LINE ENERGY D Pre-Mold Retread

SmartWay  
Verified

SmartWay<sup>®</sup> fuel economy<sup>(1)</sup> with long treadlife and excellent traction in line haul energy drive retread.

- Maximum shoulder adhesion is delivered with a winged tread feature.
- Driver confidence comes from the use of Matrix Siping, with its full depth, interlocking sipes provide thousands of biting edges for traction.
- MICHELIN ON MICHELIN<sup>(2)</sup>
- Also available as a Custom Mold retread.



LINE HAUL REGIONAL URBAN ON/OFF ROAD

Tread Sizes	Metric	375/425 <sup>(3)</sup>
MSPN		08287
Tread Depth	Metric	17 mm
	Inches	22/32"

(1) Based on industry standard rolling resistance testing of comparable tires and retreads. Actual results may vary, and may be impacted by many factors, to include road conditions, weather and environment, driver performance, etc.

(2) A premium MICHELIN<sup>®</sup> retread with special guarantee(s) when retreaded on a MICHELIN<sup>®</sup> casings. See guarantee(s) at [business.michelinman.com](http://business.michelinman.com) for details.

(3) Tread widths with two measurements have wings. The first number is tread base width in mm. The second number is the overall width, wing tip to tip.

### XD4<sup>®</sup> Pre-Mold Retread

Drive position retread designed for high torque conditions, e.g. 4x2's, in line haul and regional applications.

- Extra deep tread design optimized for high torque applications e.g. 4x2's.
- Open shoulder design helps deliver exceptional traction.
- Unique scrub resistant compound.
- Also available as a Custom Mold retread.



LINE HAUL REGIONAL URBAN ON/OFF ROAD

Tread Sizes	Metric	210	220	230
MSPN		92270	83674	78304
Tread Depth	Metric	22 mm		
	Inches	28/32"		

Exceeding the legal speed limit is neither recommended nor endorsed.

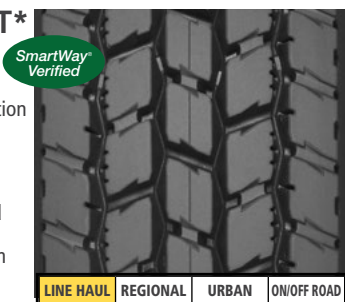


## DRIVE POSITION RETREADS

### XDA2® 19 AT and 23 AT\* Pre-Mold Retread

Drive position retread designed for fuel savings, durability, and all-weather traction for line haul applications.

- Fuel efficient<sup>(1)</sup> Advanced Technology compound.
- No Compromise performance.
- Modified tread block design optimized for long, even wear.
- XDA2® 23 - also available as a Custom Mold.



LINE HAUL REGIONAL URBAN ON/OFF ROAD

		XDA2 19 AT*		XDA2 23 AT*			
Tread Sizes	Metric	219	225	211\#8.5N	219\#9	225\#9.5	232\#10
MSPN		56259	79760	77114	59027	60625	80338
Tread Depth	Metric	15 mm		18 mm			
	Inches	19/32"		23/32"			

\* AT designated Advanced Technology Compounds for fuel savings.

(1) Based on industry standard rolling resistance testing of comparable tires and retreads. Actual results may vary, and may be impacted by many factors, to include road conditions, weather and environment, driver performance, etc.

### X ONE® LINE GRIP D Pre-Mold Retread

The long wearing, outstanding traction MICHELIN® X One® drive retread for line haul and regional applications.

- Extra-Wide Tread – Provides excellent stability while helping to improve handling and mileage.
- Long tread life with exceptional traction from wide, open shoulder grooves. 30% more mileage challenge guarantee\*
- Winged Tread – Provides maximum shoulder adhesion in high scrub applications.
- Matrix sipes help provide inter-locking action which offers excellent traction and even wear. Zig-Zag groove walls help provide optimized biting edges and excellent water and snow evacuation. Full depth sipes help provide excellent traction throughout the life of the tread.
- Exclusive, unique two-layer compound designed to minimize internal casing temperatures for longer tread and casing life.
- MICHELIN ON MICHELIN<sup>(1)</sup>



LINE HAUL REGIONAL URBAN ON/OFF ROAD

Tread Sizes	Metric	375/425 <sup>(2)</sup>	385/435 <sup>(2)</sup>
MSPN		68622	70235
Tread Depth	Metric	21 mm	
	Inches	27/32"	

(1) A premium MICHELIN® retread with special guarantee(s) when retreaded on a MICHELIN® casings. See guarantee(s) at [business.michelinman.com](http://business.michelinman.com) for details.

(2) Tread widths with two measurements have wings. The first number is tread base width in mm. The second number is the overall width, wing tip to tip.

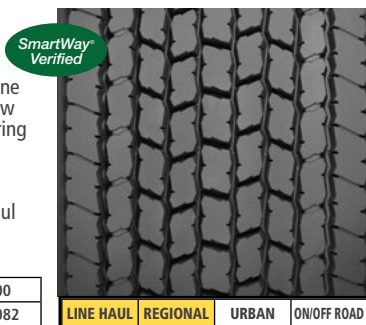
\* See Reference Materials for details.

### X ONE® XDA-HT Pre-Mold Retread

Drive position retread optimized for line haul and regional applications, for new generation wide-based singles, requiring effective handling and long tread life.

- Aggressive Lug-Type Design.
- Increased Traction and Treadwear.
- Optimized for Regional and Line Haul Operations.
- Cool Running Compound.

Tread Sizes	Metric	390	400
MSPN		18725	01082
Tread Depth	Metric	21 mm	
	Inches	26/32"	



LINE HAUL REGIONAL URBAN ON/OFF ROAD

Exceeding the legal speed limit is neither recommended nor endorsed.

## DRIVE POSITION RETREADS

### XDC® 22 Pre-Mold Retread

Drive position retread with well-balanced properties designed for excellent wear and traction in line haul and regional applications.

- Open shoulder design optimized for exceptional traction.
- Solid center rib helps promote long, even wear.
- Classic drive axle design delivers excellent wear and traction.



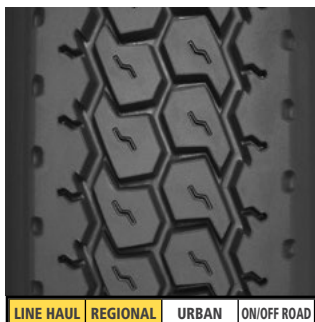
LINE HAUL REGIONAL URBAN ON/OFF ROAD

Tread Sizes	Metric	211\#8.5N	219\#9	225\#9.5
MSPN		54426	96544	84986
Tread Depth	Metric	17 mm		
	Inches	22/32"		

### XDHT® Pre-Mold Retread

Drive position retread designed for line haul and regional applications.

- Solid shoulder design optimized for high scrub applications.
- Block design optimized for high torque operations.
- Also available as a Custom Mold retread.
- Available siped.



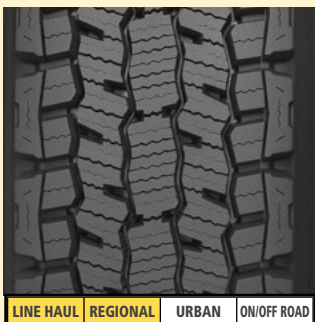
LINE HAUL REGIONAL URBAN ON/OFF ROAD

Tread Sizes	Metric	180	194\#7	203\#8	211\#8.5N	219\#9	225\#9.5	232\#10	240
MSPN (MSPN Siped)		44572	94558	54461	65683 (91143)	84811 (73107)	61815 (59826)	87926	10984
Tread Depth	Metric	15 mm			18 mm				
	Inches	19/32"			23/32"				

### XDN®2 Pre-Mold Retread

The all-weather drive retread optimized for exceptional traction and mileage.

- Outstanding winter and wet traction utilizing Michelin's patented Matrix Siping technology.
- Wide open shoulder grooves help deliver traction without compromising tread life.
- Increased tread life over previous generation winter and wet traction tread.



LINE HAUL REGIONAL URBAN ON/OFF ROAD

Tread Sizes	Metric	220	230	240
MSPN		15171	87596	22661
Tread Depth	Metric	21.5 mm		
	Inches	27/32"		

## DRIVE POSITION RETREADS

### XM+S4® Pre-Mold Retread

Drive position retread with well-balanced properties designed for enhanced traction, especially in snow and mud conditions, for line haul and regional applications.

- Open lug tread design promotes self-cleaning of lugs maximizing mud and snow traction.
- Chevron block design for high traction and low noise.



LINE HAUL REGIONAL URBAN ON/OFF ROAD

Tread Sizes	Metric	211\#8.5N	219\#9	225\#9.5
MSPN		64760	61591	67565
Tread Depth	Metric	16.5 mm		
	Inches	21/32"		

### X® MULTI ENERGY D Pre-Mold Retread

High mileage, fuel efficient SmartWay® verified drive retread, optimized for regional and super regional applications.

- 25% longer tread life<sup>(1)</sup> guaranteed though the wear resistance of the dual energy compound tread, an optimized footprint and sipesaver technology.
- No compromise SmartWay® fuel economy is delivered by the Dual Energy Compound Tread, offering a top tread layer that delivers excellent fuel efficiency as well as exceptional wear properties, over a bottom layer of cool tread rubber that minimizes internal casing temperatures for low rolling resistance.
- Driver confidence comes from the outstanding traction of Matrix Siping.
- MICHELIN ON MICHELIN<sup>(2)</sup>

SmartWay  
Verified



LINE HAUL REGIONAL URBAN ON/OFF ROAD

Tread Sizes	Metric	220	230	240
MSPN		53432	54772	05189
Tread Depth	Metric	17 mm		
	Inches	21/32"		

(1) As compared to MICHELIN® XDA2® 23 Pre-Mold Retreads

(2) A premium MICHELIN® retread with special guarantee(s) when retreaded on a MICHELIN® casing. See guarantee(s) at [business.michelinman.com](http://business.michelinman.com) for details.

### CD-LL Pre-Mold Retread

Drive position retread with well-balanced properties designed for trade-in vehicles in regional and line haul applications.

- Meets truck manufacturers trade-in requirements.
- 14/32nds tread depth.



LINE HAUL REGIONAL URBAN ON/OFF ROAD

Tread Sizes	Metric	210	220	230
	Standard	8.5N	9.0	9.5
MSPN		74178	61482	57932
Tread Depth	Metric	11 mm		
	Inches	14/32"		

## DRIVE POSITION RETREADS

### MD XDN®2 Pre-Mold Retread

The MICHELIN® MD XDN®2 Pre-Mold™ Retread is a drive position retread optimized for traction and mileage for urban and regional light and medium duty vehicles with 16" to 19.5" tires. <sup>(1)</sup>

- Designed for straight trucks and parcel package vehicles.
- Wide, open-shoulder grooves provide long wear life.
- Designed to minimize internal casing temperature for longer tread and casing life.
- Full-depth sipes provide excellent traction and even wear.

(1) Speed limit of 87 mph for the 190-200 mm size.



LINE HAUL REGIONAL URBAN ON/OFF ROAD

Tread Sizes	Metric	190 <sup>(1)</sup>	200 <sup>(1)</sup>	210	220	230
MSPN		87625	88045	88381	88997	89804
Tread Depth	Metric	14 mm		16 mm		
	Inches	18/32"		20/32"		

### XDE® M/S Pre-Mold Retread

Drive position retread with well-balanced properties designed for enhanced traction, especially in muddy conditions, for regional applications.

- Open shoulder tread design optimized to help deliver high traction while providing excellent treadwear.
- Offset shoulder blocks help provide added traction in mud and soft soil conditions.



LINE HAUL REGIONAL URBAN ON/OFF ROAD

Tread Sizes	Metric	170	180	190	200	210	220	230
MSPN		57384	58140	04109	94728	66838	94447	86443
Tread Depth	Metric	14 mm		16 mm		17 mm		
	Inches	18/32"		20/32"		22/32"		

### XDS®2+ Pre-Mold Retread

The MICHELIN® XDS®2+ Pre-Mold Retread delivers improved year-round drive axle

- Driving confidence in severe weather conditions comes with the improved traction of the MICHELIN® XDS®2+ Pre-Mold Retread.
- Deep sipes, zig-zag groove walls with optimized biting edges, and v-shaped transverse shoulder grooves for stone/mud/snow evacuation, deliver year round driving confidence.
- Wide contact patch to distribute force.
- Directional tread that reduces heel/toe wear.
- Teardrop at the base of the sipes relieves stress and helps prevent tearing.
- 25/32nds original tread depth



LINE HAUL REGIONAL URBAN ON/OFF ROAD

Tread Sizes	Metric	210	220	230	240	250
MSPN		15860	16888	17019	17405	17979
Tread Depth	Metric	20 mm				
	Inches	25/32"				

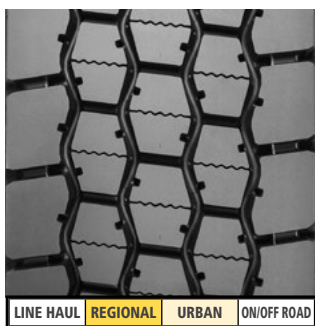
Exceeding the legal speed limit is neither recommended nor endorsed.

## DRIVE POSITION RETREADS

### X® MULTI D Pre-Mold Retread

Regional drive retread designed for all season traction without compromising high mileage to provide optimal total cost of ownership and driver satisfaction.

- Open shoulder design with regenerating tread technologies for optimum grip throughout life.
- 28/32nds of tread with compounding designed to deliver scrub resistance and high mileage.
- Co-extruded compounding, designed to reduce heat build up protecting the casing and improving fuel efficiency.
- Teardrop grooves at the base of the sipes designed to provide reduced stress under high torque conditions.



LINE HAUL REGIONAL URBAN ON/OFF ROAD

Tread Sizes	Metric	220	230	240	250	260
MSPN		17923	16430	89939	49017	49862
Tread Depth	Metric	22 mm				
	Inches	28/32"				

### XDU®S Pre-Mold Retread

Drive position retread designed with optimal scrub resistance for challenging urban applications.

- More rubber mass to aid in scrub resistance.
- Co-Ex Technology, unique two layer compound designed to minimize casing temperature for longer casing life.
- Proprietary compound specifically formulated for demanding, high scrub operations.
- Lug design optimized for exceptional wear in high scrub, high traction operations.



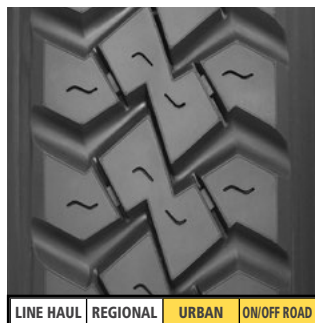
LINE HAUL REGIONAL URBAN ON/OFF ROAD

Tread Sizes	Metric	220	230	240	250	270
MSPN		28156	15175	13197	17883	22587
Tread Depth	Metric	25 mm				
	Inches	32/32"				

### XDY® Pre-Mold Retread

Drive position retread designed for on/off road, urban, and regional applications that demand rugged wear resistance.

- Chip and cut resistant compound.
- Deep tread for traction and mileage.



LINE HAUL REGIONAL URBAN ON/OFF ROAD

Tread Sizes	Metric	203\#8	211\#8.5N	219\#9	225\#9.5	232\#10	238\#10.5	240	252
MSPN		81860	59052	65072	87485	48059	46614	70606	88519
Tread Depth	Metric	21 mm						25 mm	
	Inches	26/32"						32/32"	

Exceeding the legal speed limit is neither recommended nor endorsed.

## DRIVE POSITION RETREADS

### XDY®-1 Pre-Mold Retread

Drive position retread designed for on/off road and urban applications that demand rugged wear resistance.

- Chip and cut resistant compound.
- Directional tread optimized for traction.
- Extra deep tread for extra protection and mileage.



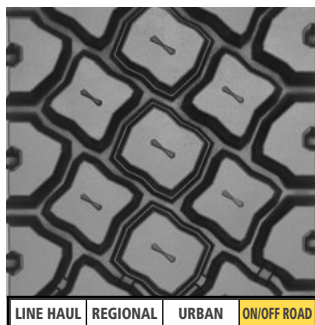
LINE HAUL REGIONAL URBAN ON/OFF ROAD

Tread Sizes	Metric	211\#8.5N	219\#9	225\#9.5	232\#10	238\#10.5
MSPN		44358	61659	57316	52178	79263
Tread Depth	Metric	24 mm				
	Inches	30/32"				

### XDY-EX Pre-Mold Retread

Delivers exceptional durability and traction in demanding off-road applications.

- Driving confidence for the challenging off-road conditions of construction, logging, and mining is delivered through an optimized tread, using a raised block sculpture, and deep 32/32nds of tread depth. This combination is designed to deliver exceptional traction in demanding environments.
- Long tread life is delivered using proprietary compound technology, that provides exceptional wear resistant properties, alongside stone ejector ledges to reduce the hazards of stone drilling.



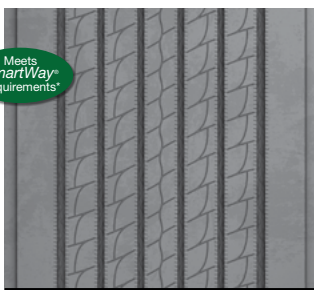
LINE HAUL REGIONAL URBAN ON/OFF ROAD

Tread Sizes	Metric	220	230	240
MSPN		50243	11534	73643
Tread Depth	Metric	25 mm		
	Inches	32/32"		

## X ONE® LINE ENERGY T2 Pre-Mold Retread

Designed for improved tread wear while providing durability and fuel savings<sup>(1)</sup> to lower your total cost of ownership (TCO).

- New Tread Design – Micro sipes and a solid shoulder help reduce irregular wear.
- Broad, Optimized Contact Patch – Spreads stress evenly across the tread to promote clean, even wear.
- Winged Tread – Provides maximum shoulder adhesion to the casing
- Waved Groove Bottoms – Helps prevent stone drilling
- Mileage Performance Promise<sup>(2)</sup>



LINE HAUL	REGIONAL	URBAN	ON/OFF ROAD
-----------	----------	-------	-------------

Tread Sizes	Metric	375/425 <sup>(3)</sup>
MSPN		47715
Tread Depth	Metric	10.5 mm
	Inches	13/32"

(1) The U.S. EPA as part of their SmartWay® Program has demonstrated incremental fuel savings when low rolling resistance tires are used just on the tractor and/or just on the trailer. Actual results may vary, and may be impacted by many factors, to include road conditions, weather, environment, combination of steer and drive tires used, driving habits, tire size, equipment, and maintenance.

(2) See [business.michelinman.com](http://business.michelinman.com) for details.

## X® LINE ENERGY T Pre-Mold Retread

A premium trailer position retread for line haul applications, designed to provide fuel efficiency<sup>(1)</sup> and long, even wear.

- New siping technology and decoupling groove to support even wear on the trailer axle position
- Wider tread widths available – Stress on the tread is more evenly distributed for long, even tread life
- Variable groove bottom features to help resist stone retention for longer wear
- Advanced compound tread – The MICHELIN® X® Line Energy T Pre-Mold retread provides 5.0% lower rolling resistance vs. the MICHELIN® XT-1® AT Pre-Mold retread.<sup>(1)</sup>
- Available siped.



LINE HAUL	REGIONAL	URBAN	ON/OFF ROAD
-----------	----------	-------	-------------

(1) Based on external rolling resistance tests of the MICHELIN® X® Line Energy T Pre-Mold retread in 230mm width and current MICHELIN® XT-1® AT Pre-Mold retread in 225mm width using ISO 28580 test method in tire size YOK RY617 295/75R22.5. Actual on-road fuel saving results may vary, and may be impacted by many factors, to include road conditions, weather, environment, combination of steer and trailer tires used, driving habits, tire size, equipment and maintenance.

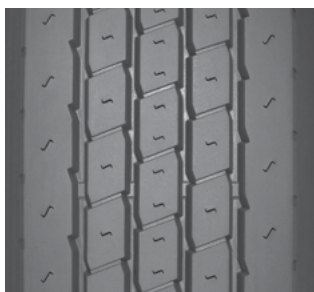
Tread Sizes	Metric	200	210	220	230	240	250
MSPN (MSPN Siped)		68515 (22028)	68646 (22707)	69876 (22865)	69941 (23546)	70128 (23951)	70263 (24032)
Tread Depth	Metric	9 mm					
	Inches	11/32"					

## XTA® Pre-Mold Retread

Trailer position retread designed to deliver good, all-purpose performance in line haul and regional applications.

- Excellent stability.
- Good resistance in high scrub operations.

Tread Sizes	Metric	240	260
MSPN		26264	24867
Tread Depth	Metric	13 mm	
	Inches	16/32"	



LINE HAUL	REGIONAL	URBAN	ON/OFF ROAD
-----------	----------	-------	-------------



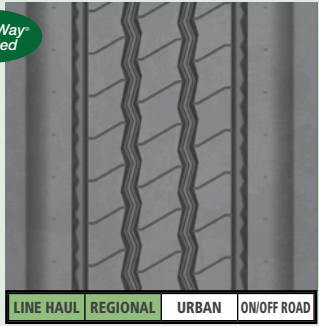
## TRAILER POSITION RETREADS

### X<sup>®</sup> MULTI T SA Pre-Mold Retread

SmartWay<sup>®</sup>  
Verified

Designed to address the scrub and stresses in spread axle applications while providing superior mileage performance in regional and line haul operations.

- Rounded, solid shoulder provides resistance to aggression and improves wear rate
- New premium rubber compound enhances scrub resistance and wear rate
- Tapered tread extension withstands shifting footprint and lateral stress
- Groove-bottom protectors defends against stone drilling



LINE HAUL REGIONAL URBAN ON/OFF ROAD

Tread Sizes	Metric	185/225 <sup>(1)</sup>	195/235 <sup>(1)</sup>	205/245 <sup>(1)</sup>	215/255 <sup>(1)</sup>	225/265 <sup>(1)</sup>	245/285 <sup>(1)</sup>
MSPN		13086	14000	14234	14882	16049	17117
Tread Depth	Metric	13 mm					
	Inches	16/32"					

(1) Tread widths with two measurements have wings. The first number is tread base width in mm. The second number is the overall width, wing tip to tip.

### XTA<sup>®</sup>-2 Pre-Mold Retread

SmartWay<sup>®</sup>  
Verified

SmartWay<sup>®</sup> verified trailer tread designed to deliver enhanced wear-life in regional and line haul service.

- Fuel Efficiency: Provides low rolling resistance from Advanced Technology compound
- Strong Wet Weather Performance: Effective water evacuation from four see through circumferential grooves
- Good Durability: Scrub and abrasion resistance from solid shoulder
- Available siped.



LINE HAUL REGIONAL URBAN ON/OFF ROAD

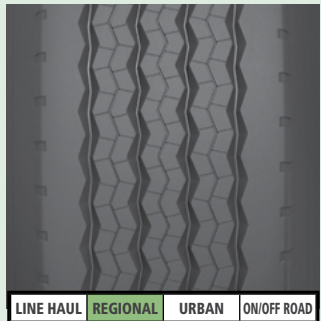
Tread Sizes	Metric	194\#7	203\#8	211\#8.5N	219\#9	225\#9.5	240
MSPN (MSPN Siped)		74704	74861	74922 (75564)	74947 (75658)	75178 (76406)	75540 (76895)
Tread Depth	Metric	9 mm					
	Inches	11/32"					

### XTE2<sup>®</sup> Wide Base Pre-Mold Retread

Wide grooves provide exceptional water evacuation.

- Wide shoulder rib to help resist scrub and abrasion.
- Tapered tread extensions to withstand shifting footprint stress typical of wide base service.

(1) Tread widths with two measurements have wings. The first number is tread base width in mm. The second number is the overall width, wing tip to tip.



LINE HAUL REGIONAL URBAN ON/OFF ROAD

Tread Sizes	Metric	290/345 <sup>(1)</sup>
MSPN		88809
Tread Depth	Metric	16 mm
	Inches	20/32"

## TRAILER POSITION RETREADS

### X ONE® MULTI ENERGY T Pre-Mold Retread

A SmartWay® verified trailer position retread which ensures the right balance of outstanding removal mileage, reduced irregular wear and fuel efficiency, optimized for regional applications.

- Excellent mileage delivered with optimized architecture to resist irregular wear and deep 15/32nds of tread depth.
- Long tread life is enhanced using a winged tread for maximum adhesion.
- Waved groove bottoms & stone ejectors help defend against stone drilling.
- Irregular wear is reduced by microspipes and a solid shoulder.
- SmartWay® fuel efficiency<sup>(1)</sup> comes from use of Advanced Technology Compounds to deliver low rolling resistance with excellent mileage.
- MICHELIN ON MICHELIN<sup>(2)</sup>

SmartWay®  
Verified



LINE HAUL REGIONAL URBAN ON/OFF ROAD

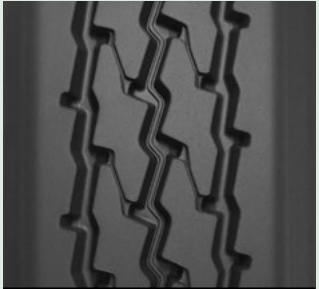
Tread Sizes	Metric	375/425 <sup>(3)</sup>	385/435 <sup>(3)</sup>
MSPN		55784	84963
Tread Depth	Metric	12 mm	
	Inches	15/32"	

- (1) Based on industry standard rolling resistance testing of comparable tires and retreads. Actual results may vary, and may be impacted by many factors, to include road conditions, weather and environment, driver performance, etc.  
 (2) A premium MICHELIN® retread with special guarantee(s) when retreaded on a MICHELIN® casings. See guarantee(s) at [business.michelinman.com](http://business.michelinman.com) for details.  
 (3) Tread widths with two measurements have wings. The first number is tread base width in mm. The second number is the overall width, wing tip to tip.

### XTY® SA Pre-Mold Retread

Trailer position retread designed to deliver strong wear resistance and traction in demanding on/off road applications, especially for spread-axle and multi-axle rigs.

- Application specific chip and cut resistant compound.
- Tapered tread extensions to help withstand the stress typical of spread or multi-axle applications.
- Aggressive tread design for demanding regional and on/off road trailer operations.



LINE HAUL REGIONAL URBAN ON/OFF ROAD

- (1) Tread widths with two measurements have wings. The first number is tread base width in mm. The second number is the overall width, wing tip to tip.

Tread Sizes	Metric	205/245 <sup>(1)</sup>	215/255 <sup>(1)</sup>
MSPN		36225	08911
Tread Depth	Metric	17 mm	
	Inches	22/32"	

### IT2 Pre-Mold Retread

All position trailer axle retread is designed for use in intermodal applications.

- Optimized compound resists weather checking.
- Lightweight, with 11/32nds tread depth.
- Tread design deliver traction and wear resistance.
- For chassis use only.



LINE HAUL REGIONAL URBAN ON/OFF ROAD

Tread Sizes	Metric	200	210	220	230
	Standard	8.0	8.5N	9.0	9.5
MSPN		06637	24495	43280	68299
Tread Depth	Metric	9 mm			
	Inches	11/32"			

Exceeding the legal speed limit is neither recommended nor endorsed.

# MICHELIN® RETREADS QUICK REFERENCE TREAD GUIDE

## STANDARD SIZES

Tread Size	140	150	160	170	180	190	200
Size \ # DIE				168\#5	177\#6	194\#7	203\#8
Spread Axle Sizes <sup>(1)</sup>						185/225	195/235
X® LINE ENERGY D							
X® LINE ENERGY T							11
X® MULTI ENERGY D							
X® MULTI D							
X® MULTI T SA						18	18
XDA2® 23 AT*							
XDA2® 19 AT*							
XDA-HT High Torque							
XD4®							
XDN®2							
MD XDN®2						18	18
XDHT® <sup>(2)</sup>					19	23	23
CD LL							
IT2							11
XDC® 22							
XM+S4®							
XDE® M/S				18	18	20	20
XDS®2+							
XDU®S							
XDY®							26
XDY®-1							
XDY-EX							
XZA® <sup>(2)</sup>	13	13	13	13	13	15	15
XZE® <sup>(2)</sup>				16	18	18	18
XZE® 2							
XZU®2							
XZU®S							
XZY®							18
XZY®3							
XTA®-2 <sup>(2)</sup>						11	11
XTA®							
XTY® SA							

For up-to-date product information please visit [business.michelinman.com](http://business.michelinman.com)

(1) Tread widths with two measurements have wings. The first number is tread base width in mm.

The second number is the overall width, wing tip to tip.

(2) Available siped. Consult Michelin Retread Technologies dealers for availability.

\* AT designated Advanced Technology Compounds for fuel savings.

Product Availability (Tread Depth in Shaded Boxes)

	210	220		230	240	250	260	270	280
	211\#8.5N	219\#9	225\#9.5	232\#10	238\#10.5	252\#12			
	205/245	215/255		225/265	245/285				
		21		21	21				
	11	11		11	11	11			
		21		21	21				
		28		28	28	28	28		
	18	18		18	18				
	23	23	23	23					
		19	19						
	28	28		28	28	28	28		
	28	28		28					
		27		27	27				
	20	20		20					
	23	23	23	23	23				
	14	14		14					
	11	11		11					
	22	22	22						
	21	21	21						
	22	22		22					
	25	25		25	25	25			
		32		32	32	32		32	
	26	26	26	26	26 / 32	32			
	30	30	30	30	30				
		32		32	32				
	15	15	15		20				
	18	18	18		18	18			
					20	20	20		
					24	24			
		26		26	26	26		26	26
	18	18	18	18	18	20			
	24	24		24	24	24		24	
	11	11	11		11				
					16		16		
	22	22							

– Federal Motor Carrier Safety Regulations, 9 C.F.R. § 395.75 (d), specify that “no bus shall be operated with regrooved, recapped or retreaded tires on the front wheels.”

– Retread tread selection should always consider the casing’s original service application design and speed limit as published in that tire manufacturer’s data book. Applying treads intended for a more severe service / speed application than the original casing design or that would imply a higher speed service than the casing’s original speed rating, is generally not recommended.

# MICHELIN® RETREADS QUICK REFERENCE TREAD GUIDE

Product Availability (Tread Depth in 32nds in Shaded Boxes)

## WIDE BASE AND MICHELIN® X ONE® RETREAD SIZES

Tread Size	290/345 <sup>(1)</sup>	320/365 <sup>(1)</sup>	350/395 <sup>(1)</sup>	375/425 <sup>(1)</sup>	385/435 <sup>(1)</sup>	390	390/430 <sup>(1)</sup>	400
XTE2® Wide Base	20							
XZA® Wide Base	19	19						
XZH Wide Base			20					
XZL Wide Base			30					
XZY® Wide Base		20						
XZY®3 Wide Base	22							
X ONE® LINE ENERGY D			22					
X ONE® LINE ENERGY T2			13					
X ONE® LINE GRIP D			27	27				
X ONE® MULTI ENERGY T			15	15				
X ONE® XDA-HT					26		26	
X ONE® XZU®S						23		
X ONE® XZU®S+				29				

For up-to-date product information please visit [business.michelinman.com](http://business.michelinman.com)

(1) Tread widths with two measurements have wings. The first number is tread base width in mm.

The second number is the overall width, wing tip to tip.

– Retread tread selection should always consider the casing's original service application design and speed limit as published in that tire manufacturer's data book. Applying treads intended for a more severe service / speed application than the original casing design or that would imply a higher speed service than the casing's original speed rating, is generally not recommended.

## CUSTOM MOLD TREAD GUIDE

Tread Size	11R22.5	11R24.5	275/80R22.5	275/80R24.5	445/50R22.5	455/55R22.5
X® LINE ENERGY D			21			
XDA2® 23 AT	23	23	23	23		
XD4®			28			
XDHT®	23	23	23	23		
XDN®	26					
XDS®	25	25				
XDS® 2	25					
XZA®	15	15	15	15		
XZE®	18	18	18	18		
XT-1® AT	12	12	12	12		
XTA®-1	11	11	11	11		
X ONE® LINE ENERGY D					21	
X ONE® XTA®					13	
X ONE® XTE®					16	
X ONE® XZU®S						21

To learn more please contact your MICHELIN® Sales Representative or visit

US : [business.michelinman.com](http://business.michelinman.com) or CA : [michelintruck.com/en\\_CA](http://michelintruck.com/en_CA)

To order more brochures, please call Promotional Fulfillment Center 1-800-859-0665

Monday through Friday, 8 a.m. to 6 p.m. Eastern Time

**United States: Michelin North America, Inc.**

One Parkway South, Greenville, SC 29615, 1-888-622-2306

**Canada: Michelin North America (Canada), Inc.**

2500 Daniel Johnson, Suite 500, Laval, Quebec H7T 2P6, 1-888-622-2306

©2021 Michelin North America, Inc. All rights reserved. An Equal Opportunity Employer

©2021 MNA(C)I. All rights reserved.

Michelin North America, Inc. reserves the right to change product specifications at any time without notice or obligations.

MYL44115 (06/21)