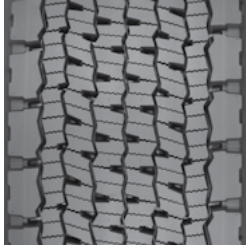


# MICHELIN ON MICHELIN RETREAD CASING GUARANTEE<sup>(1)</sup>

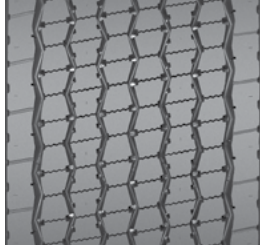
## MICHELIN on MICHELIN = 1+1<sup>(1)</sup>

### First Retread



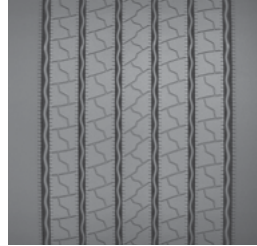
X ONE® LINE GRIP D  
Pre-Mold Retread

OR



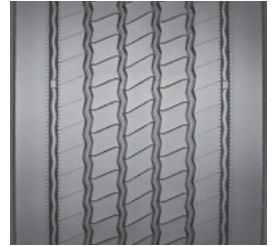
X ONE® LINE ENERGY D  
Pre-Mold Retread

OR



X ONE® LINE ENERGY T  
Pre-Mold Retread

OR



X ONE® MULTI ENERGY T  
Pre-Mold Retread

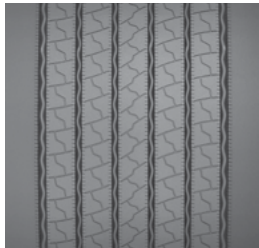
## PLUS

### Second Retread



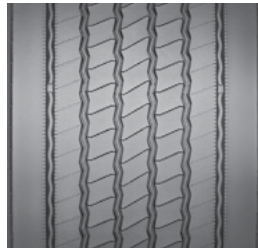
X ONE® XTA®  
Pre-Mold™ Retread

OR



X ONE® LINE ENERGY T  
Pre-Mold™ Retread

OR



X ONE® MULTI ENERGY T  
Pre-Mold™ Retread

- **Second (2nd) Retread Guarantee**
  - Combinations of MICHELIN® X ONE® treads and MICHELIN® X ONE® casings referenced in First Retread are guaranteed for a second (2nd) retread
  - Within 3 years of original<sup>(2)</sup> first (1st) retread purchase date
  - When retreaded by an authorized Michelin Retread Technologies Dealer
- **Second (2nd) Retread Limited to Trailer Application**
  - Must be a tread referenced in Second Retread

A \$100.00 casing credit will be issued if the casing is not retreadable a 2nd time due to **workmanship and materials**<sup>(3)</sup> per above specifications.

The MICHELIN ON MICHELIN retread casing guarantee is limited to 7 years from the casing's date of manufacture for the following:

- MICHELIN® X ONE® LINE GRIP D Pre-Mold Retread,
- MICHELIN® X ONE® LINE ENERGY D Pre-Mold Retread
- MICHELIN® X ONE® LINE ENERGY T Pre-Mold Retread

*See back side for details.*

(1) Michelin reserves the right to modify or discontinue this program at any time for any reason without prior notice.  
 (2) Casing has not been through a retread process before.  
 (3) See Michelin Retread Technologies, Inc. National Limited Warranty for details.

#### Claim Procedure:

- Contact your local Michelin representative
- Attach Proof of Purchase.
- Casing must be available for Michelin Field Engineer and/or MRT Retread Business Manager review.

PAY TO: \_\_\_\_\_ DATE: \_\_\_\_\_

\_\_\_\_\_ x \$100 = \$

# OF CASINGS

DEALER NAME: \_\_\_\_\_

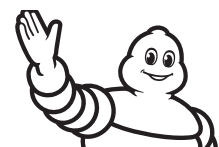
BILL TO: \_\_\_\_\_

SHIP TO: \_\_\_\_\_

MICHELIN REPRESENTATIVE NAME: \_\_\_\_\_

MICHELIN REPRESENTATIVE N-NUMBER: \_\_\_\_\_

MICHELIN REPRESENTATIVE SIGNATURE: \_\_\_\_\_



# MICHELIN

# MICHELIN on MICHELIN = 1+1<sup>(1)</sup>

Any MICHELIN® X ONE® LINE GRIP D Pre-Mold Retread or MICHELIN® X ONE® LINE ENERGY D Pre-Mold Retread or MICHELIN® X ONE® LINE ENERGY T Pre-Mold Retread or MICHELIN® X ONE® MULTI ENERGY T Pre-Mold Retread cured on any MICHELIN® X ONE® original<sup>(2)</sup> casing by an authorized Michelin Retread Technologies Dealer is guaranteed for a second retread within 3 years of original (1st) Retread DOT Date.

The MICHELIN ON MICHELIN second retread guarantee is limited to a MICHELIN® X ONE® XTA® Pre-Mold Retread, MICHELIN® X ONE® LINE ENERGY T Pre-Mold Retread, or a MICHELIN® X ONE® MULTI ENERGY T Pre-Mold Retread for a trailer application.

A \$100.00 casing credit will be issued if the casing is not retreadable a 2nd time due to workmanship and materials<sup>(3)</sup> per above specifications.

MICHELIN® X ONE® LINE GRIP D Pre-Mold Retread, MICHELIN® X ONE® LINE ENERGY D Pre-Mold Retread, or MICHELIN® X ONE® LINE ENERGY T Pre-Mold Retread Casing Guarantee is limited to 7 years from the casing's date of manufacture.

(1) Michelin reserves the right to modify or discontinue this program at any time for any reason without prior notice.

(2) Casing has not been through a retread process before.

(3) See Michelin Retread Technologies, Inc. National Limited Warranty for details.

[www.michelintruck.com](http://www.michelintruck.com)

MICHELIN NORTH AMERICA, INC., Greenville, South Carolina, USA

Copyright © 2019 Michelin North America, Inc. All rights reserved. The Michelin Man is a registered trademark owned by Michelin North America, Inc.

MICHELIN® tires and tubes are subject to a continuous development program. Michelin North America, Inc. reserves the right to change product specifications at any time without notice or obligations. (03/19)

